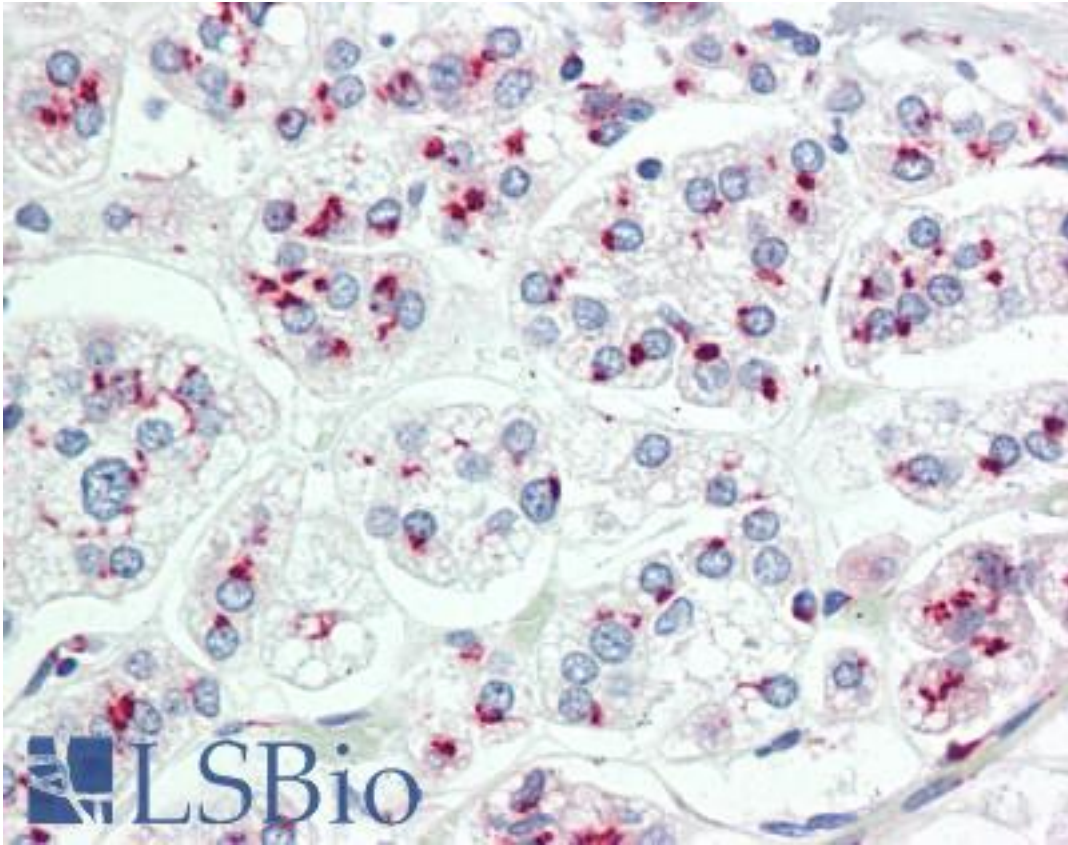


LIMD1 Rabbit anti-Human Polyclonal (aa437-467) Antibody - LS-B9619 - LSBio

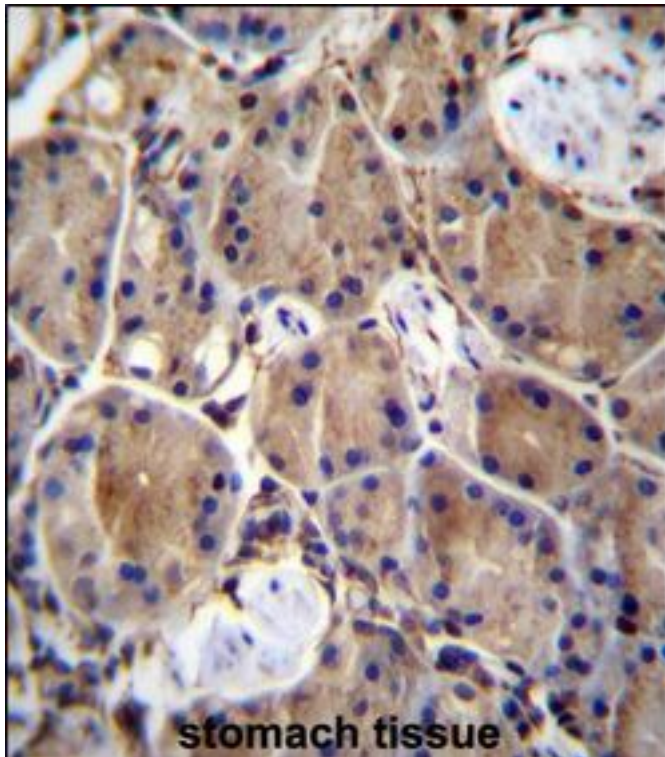
CatalogID:	LS-B9619
Validation:	This antibody replaces catalog number LS-C165775. It has been validated for use in the following assays: IHC-P.
Target:	LIM domains containing 1 (LIMD1)
Synonyms:	LIMD1 Antibody, LIM domains containing 1 Antibody
Host	LIMD1 antibody was produced in Rabbit
Clonality:	Polyclonal
Immunogen Species:	LIMD1 antibody was raised against Human
Antigen Type:	Synthetic peptide
Immunogen:	LIMD1 antibody was raised against kLH-conjugated synthetic peptide from C-terminal region of human LIMD1.
Specificity:	Human LIMD1
Epitope:	aa437-467
Reactivity:	Human, Mouse
Purification:	Immunoaffinity purified
Presentation:	PBS, 0.09% sodium azide
Recommended Storage:	Maintain refrigerated at 2-8°C for up to 6 months. For long term storage store at -20°C.
Uses:	IHC - Paraffin (1:100), Western blot (1:1000) (Optimal dilution to be determined by the researcher)
Size:	200 µl

Immunohistochemistry Image:



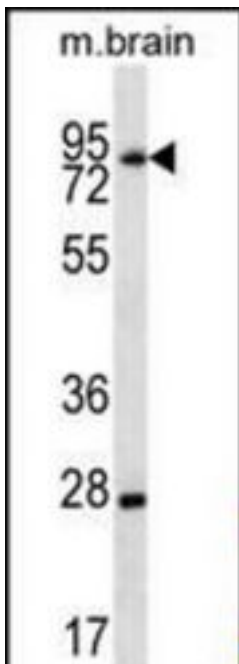
Human Adrenal: Formalin-Fixed, Paraffin-Embedded (FFPE)

Immunohistochemistry Image:



LIMD1 Antibody (C-term) IHC of formalin fixed and paraffin embedded human stomach tissue followed by peroxidase conjugation of the secondary antibody and DAB staining. This demonstrates the use of LIMD1 Antibody (C-term) for immunohistochemistry.

Western Blot Image:



LIMD1 Antibody (C-term) Western blot of mouse brain tissue lysates (35 ug/lane). This demonstrates the LIMD1 antibody detected the LIMD1 protein (arrow).

Requested From:

Japan

Laboratory Reagent For In Vitro Research Use Only

Not for resale without prior written consent from LifeSpan BioSciences, Inc.

Created on 9/24/2014

© 2014 LifeSpan BioSciences