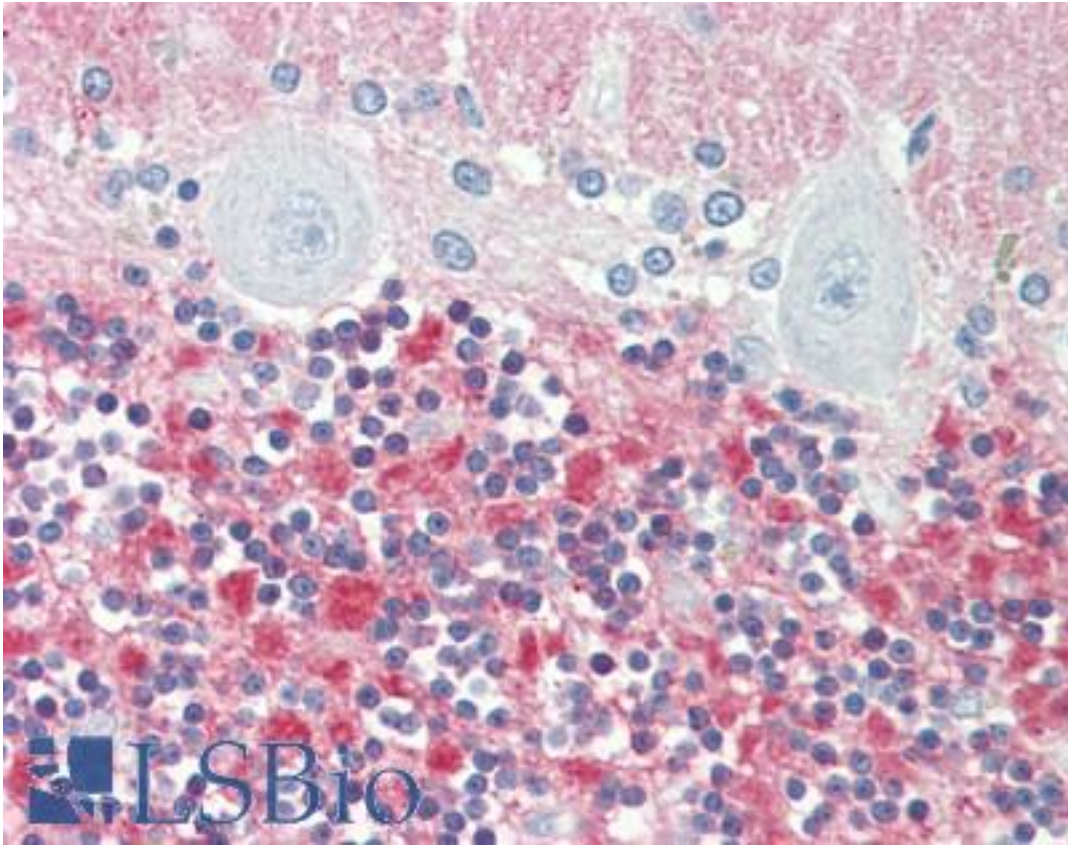


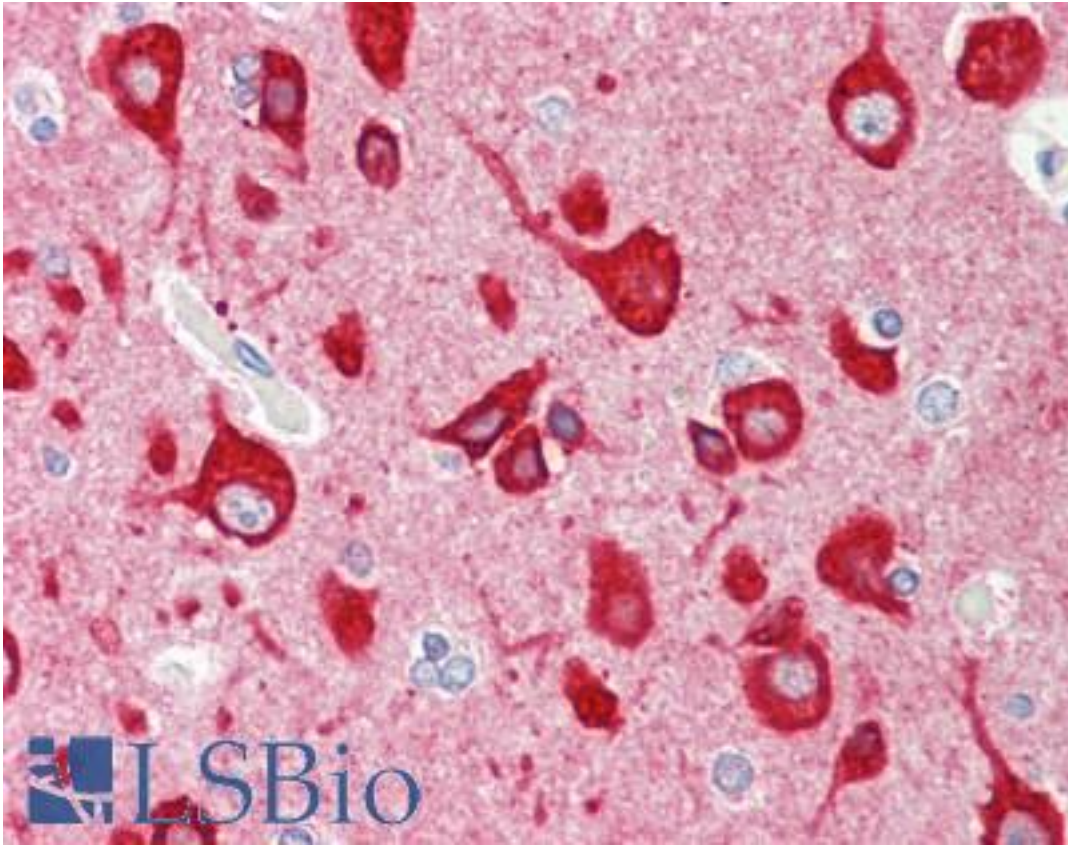
VILIP / VSNL1 Rabbit anti-Human Polyclonal (aa46-75) Antibody - LS-B9617 - LSBio	
CatalogID:	LS-B9617
Validation:	This antibody replaces catalog number LS-C160549. It has been validated for use in the following assays: IHC-P.
Target:	visinin-like 1 (VSNL1)
Synonyms:	VSNL1 Antibody, Hippocalcin-like protein 3 Antibody, HLP3 Antibody, HUVISL1 Antibody, HPCAL3 Antibody, Visinin-like 1 Antibody, VISL1 Antibody, VILIP Antibody, VILIP-1 Antibody, Visinin-like protein 1 Antibody, VLP-1 Antibody
Host	VSNL1 antibody was produced in Rabbit
Clonality:	Polyclonal
Immunogen Species:	VILIP / VSNL1 antibody was raised against Human
Antigen Type:	Synthetic peptide
Immunogen:	VILIP / VSNL1 antibody was raised against kLH-conjugated synthetic peptide from internal region of human VSNL1.
Specificity:	Human VILIP / VSNL1
Epitope:	aa46-75
Reactivity:	Human, Mouse
Purification:	Immunoaffinity purified
Presentation:	PBS, 0.09% sodium azide
Recommended Storage:	Maintain refrigerated at 2-8°C for up to 6 months. For long term storage store at -20°C.
Uses:	IHC - Paraffin (1:10 - 1:100), Western blot (1:1000), Flow Cytometry (1:10 - 1:50) (Optimal dilution to be determined by the researcher)
Size:	200 µl

Immunohistochemistry Image:



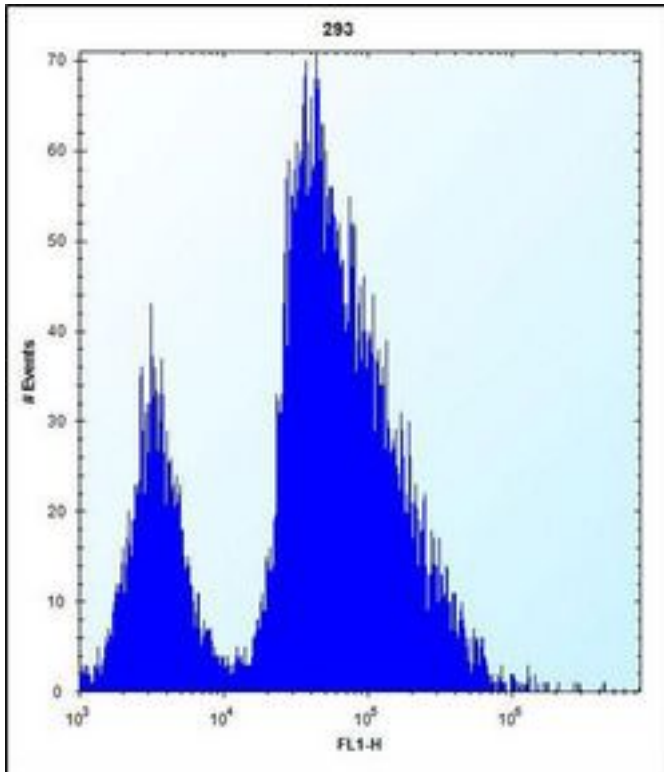
Human Brain, Cerebellum: Formalin-Fixed, Paraffin-Embedded (FFPE)

Immunohistochemistry Image:



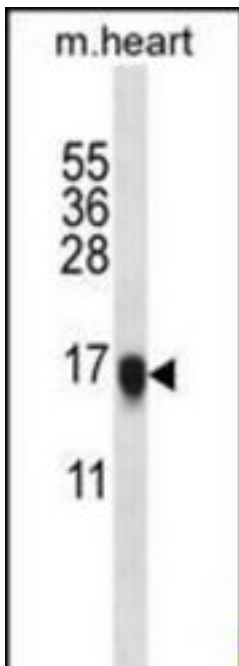
Human Brain, Cortex: Formalin-Fixed, Paraffin-Embedded (FFPE)

Flow Cytometry Image:



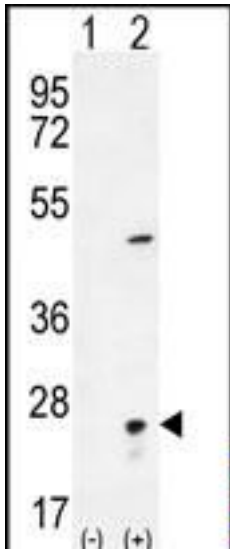
VSNL1 Antibody (Center) flow cytometry of 293 cells (right histogram) compared to a negative control cell (left histogram). FITC-conjugated goat-anti-rabbit secondary antibodies were used for the analysis.

Western Blot Image:



VSNL1 Antibody (Center) Western blot of mouse heart tissue lysates (35 ug/lane). This demonstrates the VSNL1 antibody detected the VSNL1 protein (arrow).

Western Blot Image:



Western blot of VSNL1 (arrow) using rabbit polyclonal VSNL1 Antibody (Center). 293 cell lysates (2 ug/lane) either nontransfected (Lane 1) or transiently transfected (Lane 2) with the VSNL1 gene.

Requested From:

Japan

Laboratory Reagent For In Vitro Research Use Only

Not for resale without prior written consent from LifeSpan BioSciences, Inc.

Created on 9/24/2014

© 2014 LifeSpan BioSciences