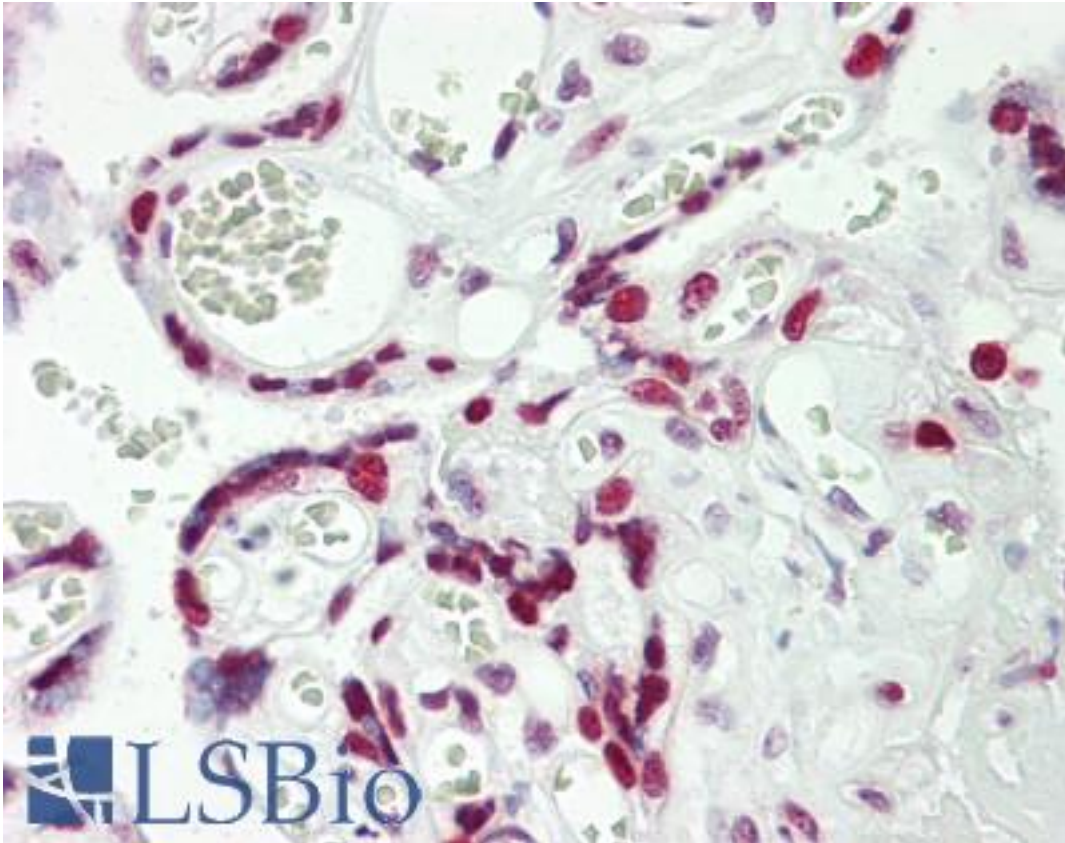


HEXIM1 Rabbit anti-Human Polyclonal (aa201-230) Antibody - LS-B9613 - LSBio

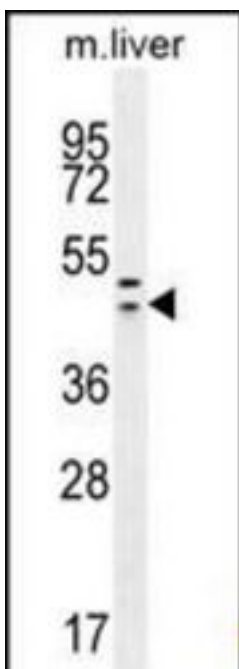
CatalogID:	LS-B9613
Validation:	This antibody replaces catalog number LS-C166846. It has been validated for use in the following assays: IHC-P.
Target:	hexamethylene bis-acetamide inducible 1 (HEXIM1)
Synonyms:	HEXIM1 Antibody, Cardiac lineage protein 1 Antibody, CLP-1 Antibody, EDG1 Antibody, HMBA-inducible Antibody, Menage a quatre 1 Antibody, Menage a quatre protein 1 Antibody, Protein HEXIM1 Antibody, MAQ1 Antibody, HIS1 Antibody
Host	HEXIM1 antibody was produced in Rabbit
Clonality:	Polyclonal
Immunogen Species:	HEXIM1 antibody was raised against Human
Antigen Type:	Synthetic peptide
Immunogen:	HEXIM1 antibody was raised against kLH-conjugated synthetic peptide from internal region of human HEXIM1.
Specificity:	Human HEXIM1
Epitope:	aa201-230
Reactivity:	Human, Mouse
Purification:	Immunoaffinity purified
Presentation:	PBS, 0.09% sodium azide
Recommended Storage:	Maintain refrigerated at 2-8°C for up to 6 months. For long term storage store at -20°C.
Uses:	IHC - Paraffin (1:10 - 1:100), Western blot (1:1000) (Optimal dilution to be determined by the researcher)
Size:	200 µl

Immunohistochemistry Image:



Human Placenta: Formalin-Fixed, Paraffin-Embedded (FFPE)

Western Blot Image:



HEXIM1 antibody (Center) Western blot of mouse liver tissue lysates (35 ug/lane). This demonstrates the HEXIM1 antibody detected the HEXIM1 protein (arrow).

Requested From:	Japan
Laboratory Reagent For In Vitro Research Use Only	
Not for resale without prior written consent from LifeSpan BioSciences, Inc.	
Created on 9/24/2014	
© 2014 LifeSpan BioSciences	