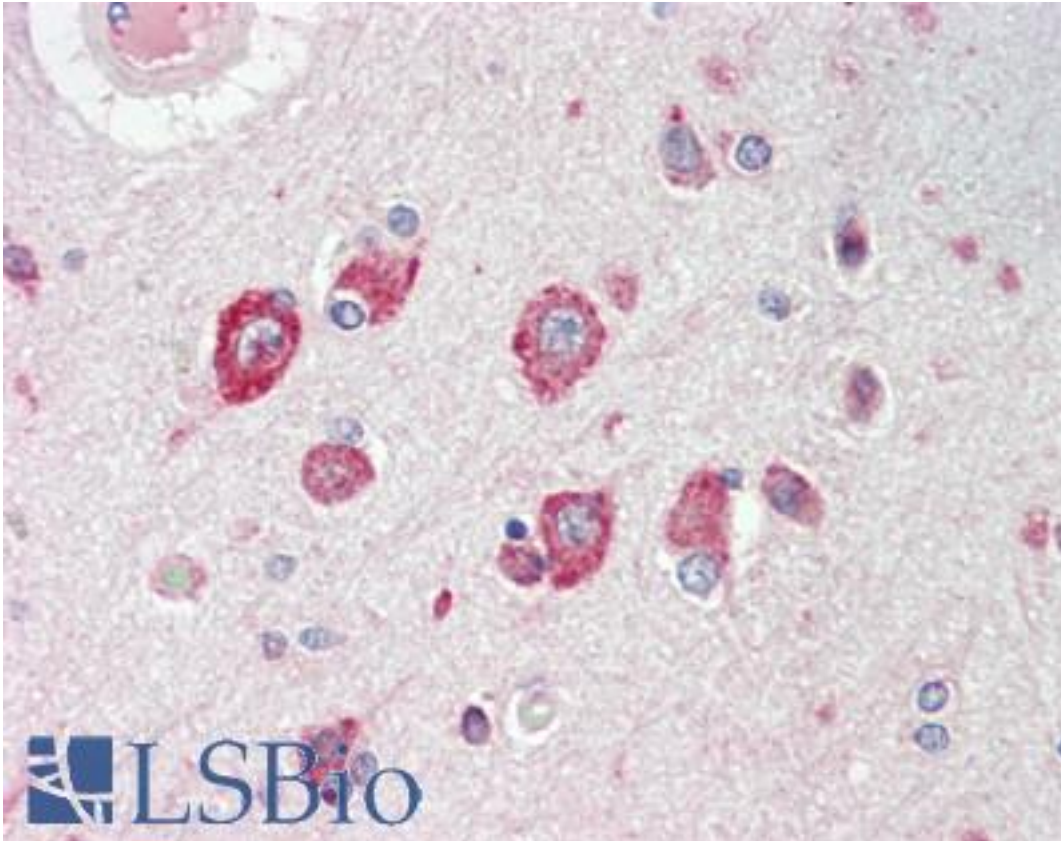


**CACNG8 Rabbit anti-Human Polyclonal (aa97-127) Antibody - LS-B9612 - LSBio**

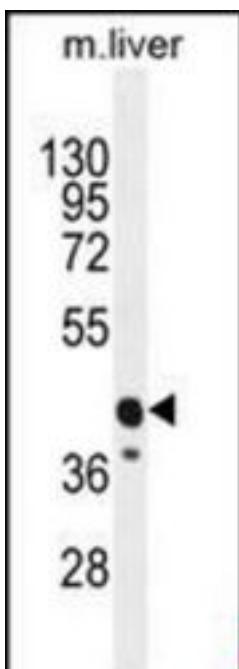
<b>CatalogID:</b>	LS-B9612
<b>Validation:</b>	This antibody replaces catalog number LS-C168266. It has been validated for use in the following assays: IHC-P.
<b>Target:</b>	calcium channel, voltage-dependent, gamma subunit 8 (CACNG8)
<b>Synonyms:</b>	CACNG8 Antibody, Gamma 8 Antibody, TARP gamma-8 Antibody
<b>Family / Subfamily:</b>	Ion Channel / Calcium channel - gamma subunit
<b>Host</b>	CACNG8 antibody was produced in Rabbit
<b>Clonality:</b>	Polyclonal
<b>Immunogen Species:</b>	CACNG8 antibody was raised against Human
<b>Antigen Type:</b>	Synthetic peptide
<b>Immunogen:</b>	CACNG8 antibody was raised against kLH-conjugated synthetic peptide from N-terminal region of human CACNG8.
<b>Specificity:</b>	Human CACNG8
<b>Epitope:</b>	aa97-127
<b>Reactivity:</b>	Human, Mouse
<b>Purification:</b>	Immunoaffinity purified
<b>Presentation:</b>	PBS, 0.09% sodium azide
<b>Recommended Storage:</b>	Maintain refrigerated at 2-8°C for up to 6 months. For long term storage store at -20°C.
<b>Uses:</b>	IHC - Paraffin (1:10 - 1:100), Western blot (1:1000) (Optimal dilution to be determined by the researcher)
<b>Size:</b>	200 µl

**Immunohistochemistry Image:**



Human Brain, Cortex: Formalin-Fixed, Paraffin-Embedded (FFPE)

**Western Blot Image:**



CACNG8 Antibody (N-term) Western blot of mouse liver tissue lysates (35 ug/lane). This demonstrates the CACNG8 antibody detected the CACNG8 protein (arrow).

<b>Requested From:</b>	Japan
Laboratory Reagent For In Vitro Research Use Only	
Not for resale without prior written consent from LifeSpan BioSciences, Inc.	
Created on 9/24/2014	
© 2014 LifeSpan BioSciences	