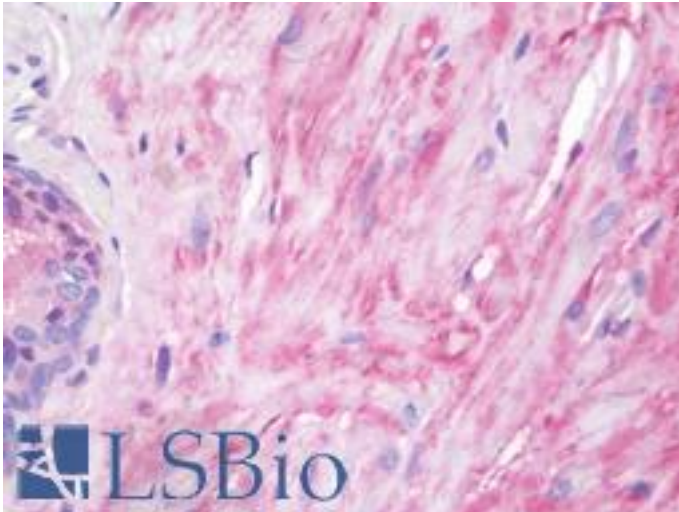


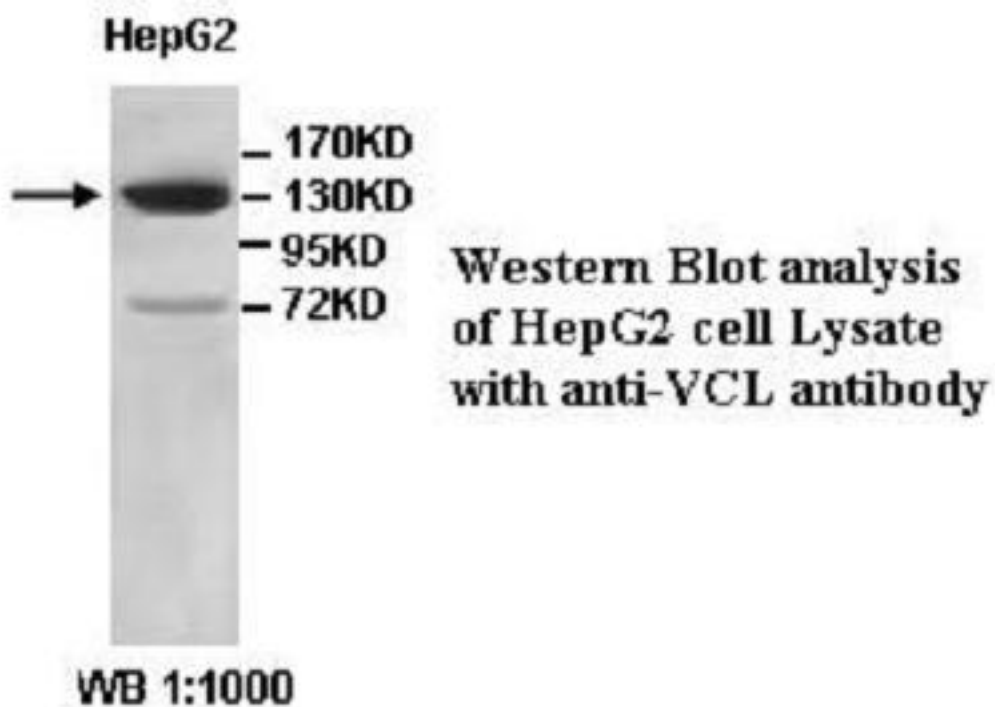
VCL / Vinculin Rabbit anti-Human Polyclonal (aa356-607) Antibody - LS-B9609 - LSBio	
<b>CatalogID:</b>	LS-B9609
<b>Validation:</b>	This antibody replaces catalog number LS-C178530. It has been validated for use in the following assays: IHC-P.
<b>Target:</b>	vinculin (VCL)
<b>Synonyms:</b>	VCL Antibody, CMD1W Antibody, CMH15 Antibody, Metavinculin Antibody, Vinculin Antibody, MVCL Antibody
<b>Family / Subfamily:</b>	Cytoskeleton
<b>Host</b>	VCL antibody was produced in Rabbit
<b>Clonality:</b>	Polyclonal
<b>Immunogen Species:</b>	VCL / Vinculin antibody was raised against Human
<b>Antigen Type:</b>	Recombinant protein
<b>Immunogen:</b>	VCL / Vinculin antibody was raised against a recombinant human VCL protein 356-607aa (BC039174).
<b>Specificity:</b>	Human vinculin.
<b>Epitope:</b>	aa356-607
<b>Reactivity:</b>	Human
<b>Purification:</b>	Affinity purified
<b>Presentation:</b>	PBS, pH 7.4 0.02% sodium azide
<b>Recommended Storage:</b>	Long term: -20°C; Short term: +4°C. Avoid repeat freeze-thaw cycles.
<b>Uses:</b>	IHC - Paraffin (10 µg/ml), Western blot (1:1000 - 1:2000), ELISA (1:20000 - 1:80000) (Optimal dilution to be determined by the researcher)
<b>Size:</b>	50 µg
<b>Concentration:</b>	1 mg/ml

**Immunohistochemistry Image:**



Human Prostate, Smooth Muscle: Formalin-Fixed, Paraffin-Embedded (FFPE)

**Western Blot Image:**



Requested From:

Japan

Laboratory Reagent For In Vitro Research Use Only

Not for resale without prior written consent from LifeSpan BioSciences, Inc.

Created on 9/24/2014

© 2014 LifeSpan BioSciences