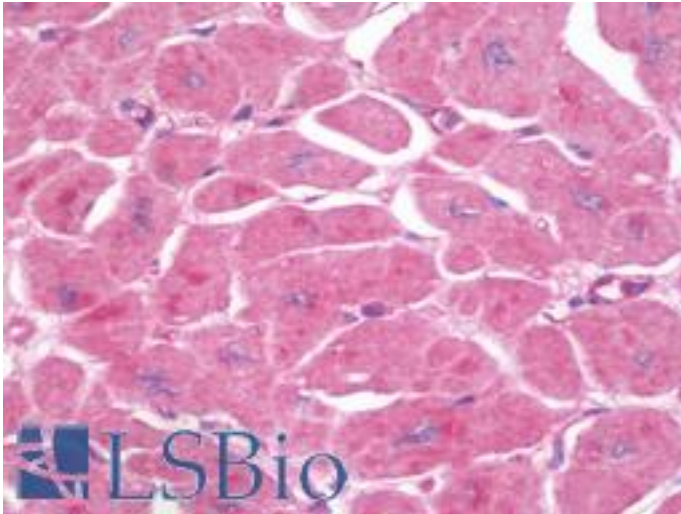


CD59 Rabbit anti-Human Polyclonal (aa29-102) Antibody - LS-B9608 - LSBio	
CatalogID:	LS-B9608
Validation:	This antibody replaces catalog number LS-C178876. It has been validated for use in the following assays: IHC-P.
Target:	CD59 molecule, complement regulatory protein
Synonyms:	CD59 Antibody, 16.3A5 Antibody, 1F5 Antibody, 1F5 antigen Antibody, CD59 glycoprotein Antibody, EL32 Antibody, EJ16 Antibody, G344 Antibody, HRF-20 Antibody, MAC-IP Antibody, MACIF Antibody, Ly-6-like protein Antibody, MEM43 Antibody, MIRC Antibody, MEM43 antigen Antibody, MIN2 Antibody, MIN3 Antibody, MSK21 Antibody, p18-20 Antibody, Protectin Antibody, MAC-inhibitory protein Antibody, MIC11 Antibody, T cell-activating protein Antibody, CD59 antigen Antibody, EJ30 Antibody, HRF20 Antibody, Human leukocyte antigen MIC11 Antibody, Lymphocytic antigen CD59/MEM43 Antibody, MIN1 Antibody
Host	CD59 antibody was produced in Rabbit
Clonality:	Polyclonal
Immunogen Species:	CD59 antibody was raised against Human
Antigen Type:	Recombinant protein
Immunogen:	CD59 antibody was raised against a recombinant human CD59 protein 29-102aa (BC001506).
Specificity:	Human CD59.
Epitope:	aa29-102
Reactivity:	Human
Purification:	Affinity purified
Presentation:	PBS, pH 7.4, 0.02% sodium azide
Recommended Storage:	Long term: -20°C; Short term: +4°C. Avoid repeat freeze-thaw cycles.
Uses:	IHC - Paraffin (5 µg/ml), ELISA (1:20000 - 1:80000) (Optimal dilution to be determined by the researcher)
Size:	50 µl
Concentration:	1 mg/ml

Immunohistochemistry Image:



Human Heart: Formalin-Fixed, Paraffin-Embedded (FFPE)

Requested From:

Japan

Laboratory Reagent For In Vitro Research Use Only

Not for resale without prior written consent from LifeSpan BioSciences, Inc.

Created on 9/24/2014

© 2014 LifeSpan BioSciences