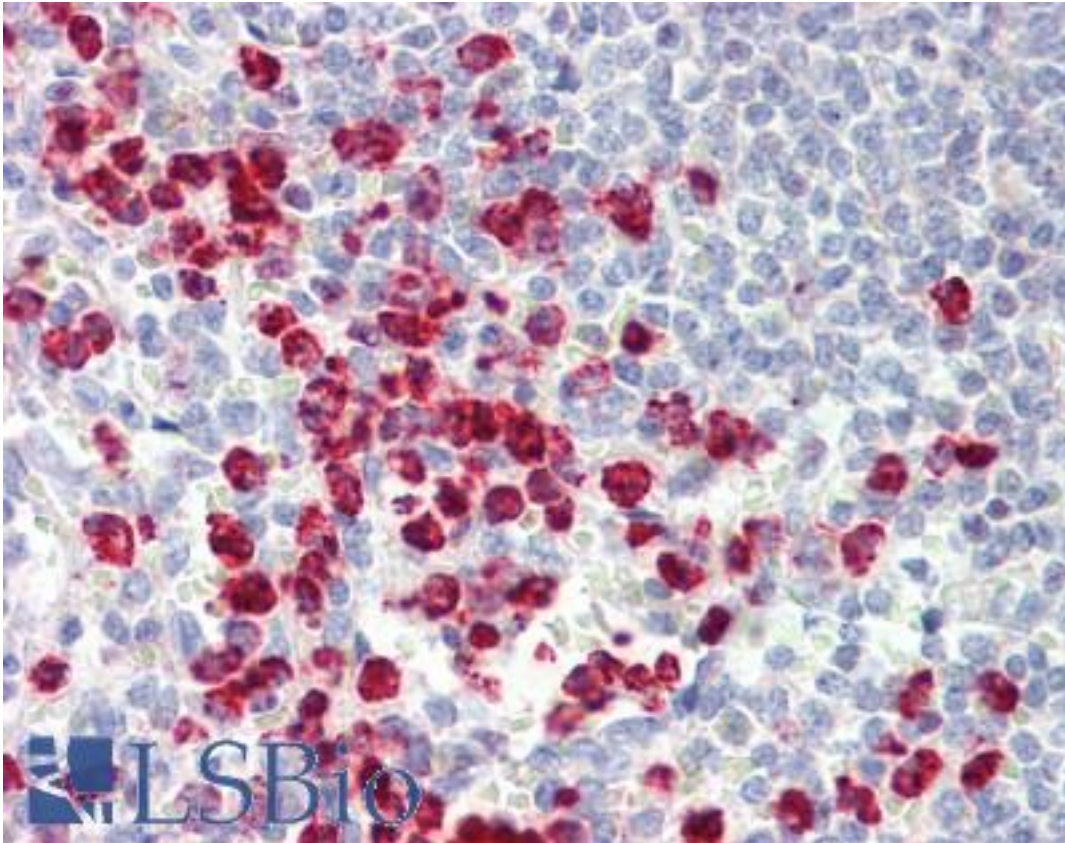


**ORMDL3 Rabbit anti-Human Polyclonal (aa56-85) Antibody - LS-B9583 - LSBio**

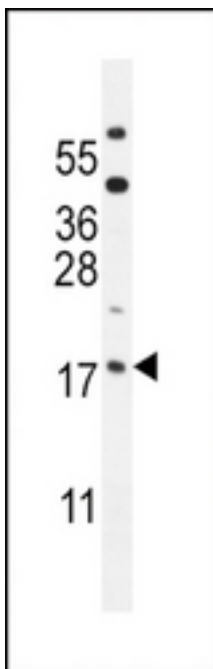
<b>CatalogID:</b>	LS-B9583
<b>Validation:</b>	This antibody replaces catalog number LS-C163273. It has been validated for use in the following assays: IHC-P.
<b>Target:</b>	ORM1-like 3 ( <i>S. cerevisiae</i> ) (ORMDL3)
<b>Synonyms:</b>	ORMDL3 Antibody, ORM1-like 3 ( <i>S. cerevisiae</i> ) Antibody, ORM1-like protein 3 Antibody, ORM1 ( <i>S. cerevisiae</i> )-like 3 Antibody
<b>Host</b>	ORMDL3 antibody was produced in Rabbit
<b>Clonality:</b>	Polyclonal
<b>Immunogen Species:</b>	ORMDL3 antibody was raised against Human
<b>Antigen Type:</b>	Synthetic peptide
<b>Immunogen:</b>	ORMDL3 antibody was raised against kLH-conjugated synthetic peptide from internal region of human ORMDL3.
<b>Specificity:</b>	Human ORMDL3
<b>Epitope:</b>	aa56-85
<b>Reactivity:</b>	Human, Mouse
<b>Purification:</b>	Immunoaffinity purified
<b>Presentation:</b>	PBS, 0.09% sodium azide
<b>Recommended Storage:</b>	Maintain refrigerated at 2-8°C for up to 6 months. For long term storage store at -20°C.
<b>Uses:</b>	IHC - Paraffin (1:100), Western blot (1:1000) (Optimal dilution to be determined by the researcher)
<b>Size:</b>	200 µl

**Immunohistochemistry Image:**



Human Spleen: Formalin-Fixed, Paraffin-Embedded (FFPE)

**Western Blot Image:**



ORM DL3 Antibody (Center) Western blot of mouse testis tissue lysates (35 ug/lane). This demonstrates the ORM DL3 antibody detected the ORM DL3 protein (arrow).

<b>Requested From:</b>	Japan
Laboratory Reagent For In Vitro Research Use Only	
Not for resale without prior written consent from LifeSpan BioSciences, Inc.	
Created on 9/24/2014	
© 2014 LifeSpan BioSciences	