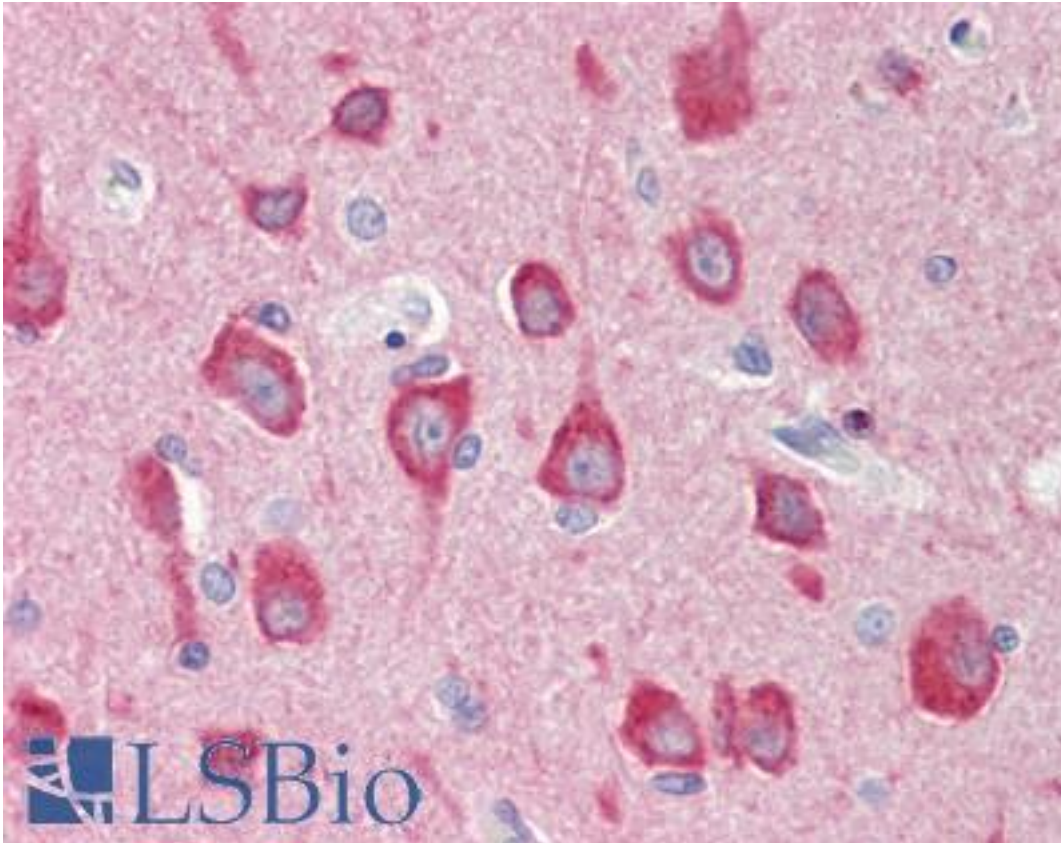


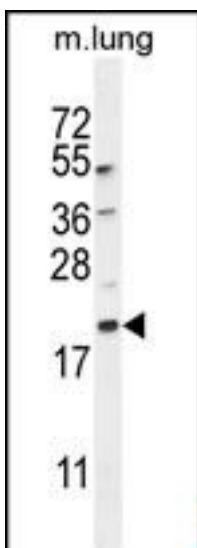
MAP1LC3B / LC3B Rabbit anti-Human Polyclonal (aa109-138) Antibody - LS-B9581 - LSBio	
<b>CatalogID:</b>	LS-B9581
<b>Validation:</b>	This antibody replaces catalog number LS-C156409. It has been validated for use in the following assays: IHC-P.
<b>Target:</b>	microtubule-associated protein 1 light chain 3 beta (MAP1LC3B)
<b>Synonyms:</b>	MAP1LC3B Antibody, ATG8F Antibody, LC3B Antibody, MAP1A/1BLC3 Antibody, MAP1A/MAP1B LC3 B Antibody, MAP1A/MAP1B light chain 3 B Antibody, MAP1ALC3 Antibody, MAP1LC3B-a Antibody
<b>Host</b>	MAP1LC3B antibody was produced in Rabbit
<b>Clonality:</b>	Polyclonal
<b>Immunogen Species:</b>	MAP1LC3B / LC3B antibody was raised against Human
<b>Antigen Type:</b>	Synthetic peptide
<b>Immunogen:</b>	MAP1LC3B / LC3B antibody was raised against kLH-conjugated synthetic peptide from human Cleaved-APG8a/b.
<b>Specificity:</b>	Human MAP1LC3B / LC3B
<b>Epitope:</b>	aa109-138
<b>Reactivity:</b>	Human, Mouse
<b>Purification:</b>	Immunoaffinity purified
<b>Presentation:</b>	PBS, 0.09% sodium azide
<b>Recommended Storage:</b>	Maintain refrigerated at 2-8°C for up to 6 months. For long term storage store at -20°C.
<b>Uses:</b>	IHC - Paraffin (1:50 - 1:100), Immunofluorescence (1:100), Western blot (1:1000) (Optimal dilution to be determined by the researcher)
<b>Size:</b>	200 µl

**Immunohistochemistry Image:**



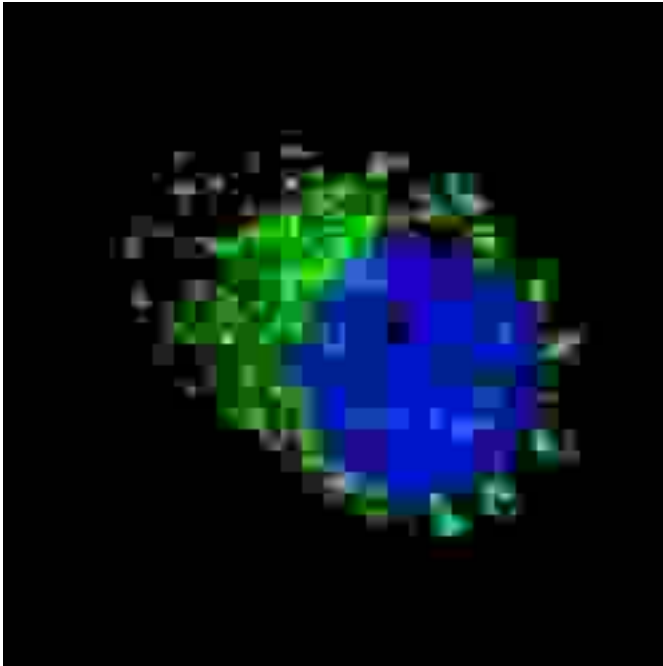
Human Brain, Cortex: Formalin-Fixed, Paraffin-Embedded (FFPE)

**Immunohistochemistry Image:**



Cleaved-APG8a/b antibody (MAP1LC3A/B) IHC of formalin fixed and paraffin embedded human skeletal muscle followed by peroxidase conjugation of the secondary antibody and DAB staining. This demonstrates the use of the Cleaved-APG8a/b antibody (MAP1LC3A/B) for immunohistochemistry.

**Western Blot Image:**



APG8a/b (MAP1LC3A/B) Western blot of mouse lung tissue lysates (35 ug/lane). This demonstrates the MAP1LC3A antibody detected the MAP1LC3A protein (arrow).

**Requested From:**

Japan

Laboratory Reagent For In Vitro Research Use Only

Not for resale without prior written consent from LifeSpan BioSciences, Inc.

Created on 9/24/2014

© 2014 LifeSpan BioSciences