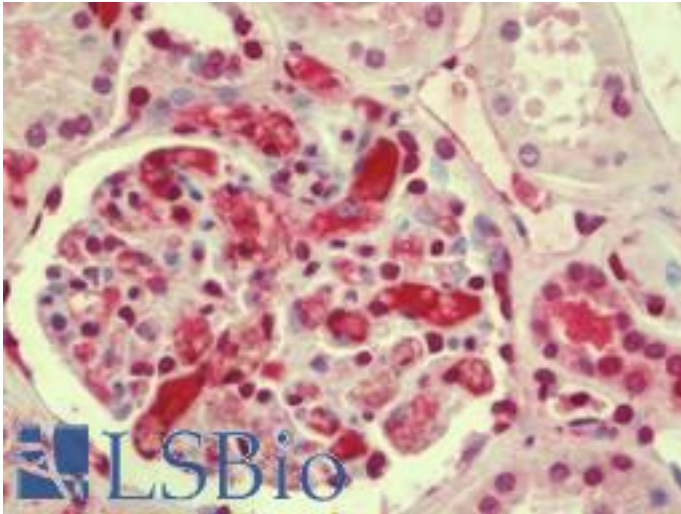


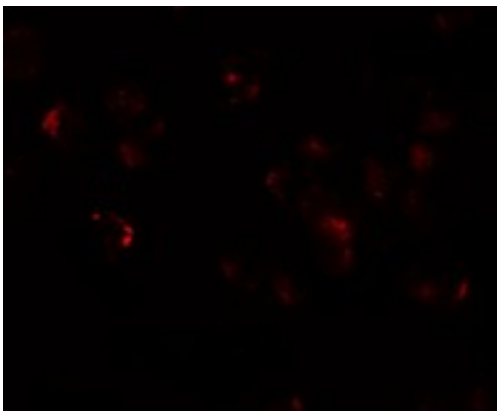
AFAP1L1 Rabbit anti-Human Polyclonal (N-Terminus) Antibody - LS-B9579 - LSBio	
<b>CatalogID:</b>	LS-B9579
<b>Validation:</b>	This antibody replaces catalog number LS-C144446. It has been validated for use in the following assays: IHC-P.
<b>Target:</b>	actin filament associated protein 1-like 1 (AFAP1L1)
<b>Synonyms:</b>	AFAP1L1 Antibody, AFAP1-like protein 1 Antibody
<b>Host</b>	AFAP1L1 antibody was produced in Rabbit
<b>Clonality:</b>	Polyclonal
<b>Immunogen Species:</b>	AFAP1L1 antibody was raised against Human
<b>Antigen Type:</b>	Synthetic peptide
<b>Immunogen:</b>	AFAP1L1 antibody was raised against a 19 amino acid peptide near the amino terminus of human AFAP1L1
<b>Specificity:</b>	Human AFAP1L1. At least four isoforms of AFAP1L1 are known to exist. This antibody is predicted to not cross-react with other AFAP family members.
<b>Epitope:</b>	N-Terminus
<b>Reactivity:</b>	Human, Mouse
<b>Purification:</b>	Immunoaffinity purified
<b>Presentation:</b>	PBS, 0.02% sodium azide
<b>Recommended Storage:</b>	Short term 4°C, long term aliquot and store at -20°C, avoid freeze thaw cycles. Store undiluted.
<b>Uses:</b>	IHC - Paraffin (5 µg/ml), ICC (5 µg/ml), Immunofluorescence (20 µg/ml), Western blot (1 µg/ml), ELISA (Optimal dilution to be determined by the researcher)
<b>Size:</b>	50 µg
<b>Concentration:</b>	1 mg/ml

**Immunohistochemistry Image:**



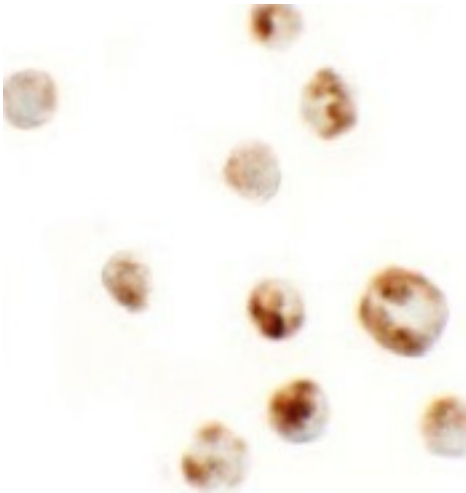
Human Kidney: Formalin-Fixed, Paraffin-Embedded (FFPE)

**Immunofluorescence Image:**



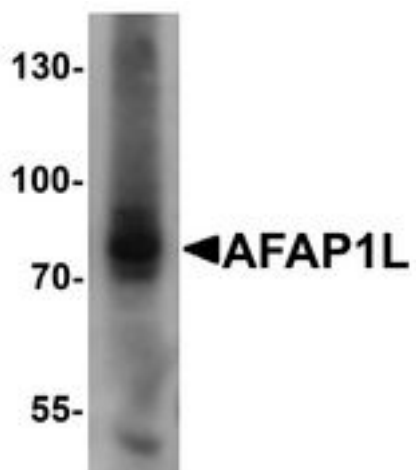
Immunofluorescence of AFAP1L in A549 cells with AFAP1L antibody at 20  $\mu\text{g/mL}$ .

**Immunocytochemistry Image:**



Immunocytochemistry of AFAP1L in A549 cells with AFAP1L antibody at 5  $\mu$ g/mL.

**Western Blot Image:**



Western blot analysis of AFAP1L1 in A549 cell lysate with AFAP1L1 antibody at 1  $\mu$ g/ml.

**Requested From:**

Japan

Laboratory Reagent For In Vitro Research Use Only

Not for resale without prior written consent from LifeSpan BioSciences, Inc.

Created on 9/24/2014

© 2014 LifeSpan BioSciences