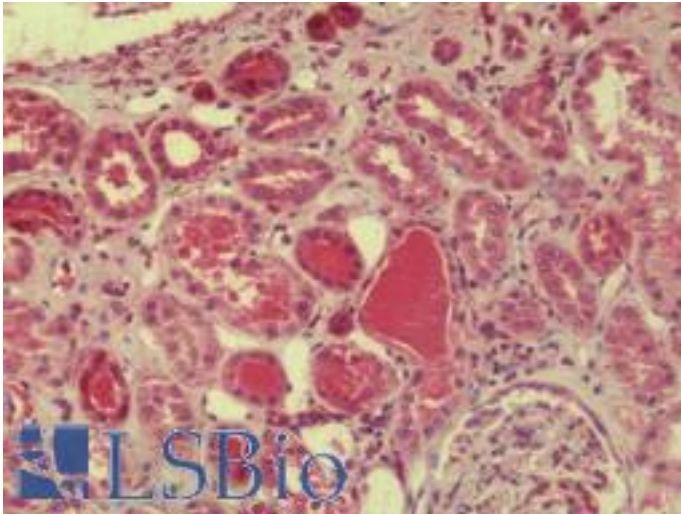


DDA1 Rabbit anti-Human Polyclonal (C-Terminus) Antibody - LS-B9572 - LSBio

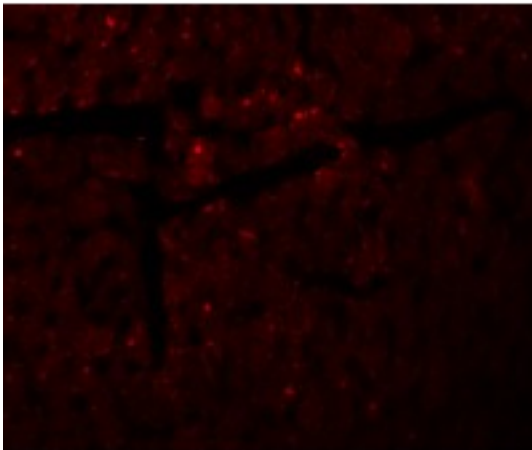
CatalogID:	LS-B9572
Validation:	This antibody replaces catalog number LS-C144419. It has been validated for use in the following assays: IHC-P.
Target:	DET1 and DDB1 associated 1 (DDA1)
Synonyms:	DDA1 Antibody, C19orf58 Antibody, DET1 and DDB1 associated 1 Antibody, PCIA1 Antibody, PCIA-1 Antibody
Host	DDA1 antibody was produced in Rabbit
Clonality:	Polyclonal
Immunogen Species:	DDA1 antibody was raised against Human
Antigen Type:	Synthetic peptide
Immunogen:	DDA1 antibody was raised against an 18 amino acid peptide near the carboxy terminus of human DDA1
Specificity:	Human DDA1.
Epitope:	C-Terminus
Reactivity:	Human, Mouse, Rat
Purification:	Immunoaffinity purified
Presentation:	PBS, 0.02% sodium azide
Recommended Storage:	Short term 4°C, long term aliquot and store at -20°C, avoid freeze thaw cycles. Store undiluted.
Uses:	IHC - Paraffin (5 µg/ml), Immunofluorescence (20 µg/ml), Western blot (1 µg/ml), ELISA (Optimal dilution to be determined by the researcher)
Size:	50 µg
Concentration:	1 mg/ml

Immunohistochemistry Image:



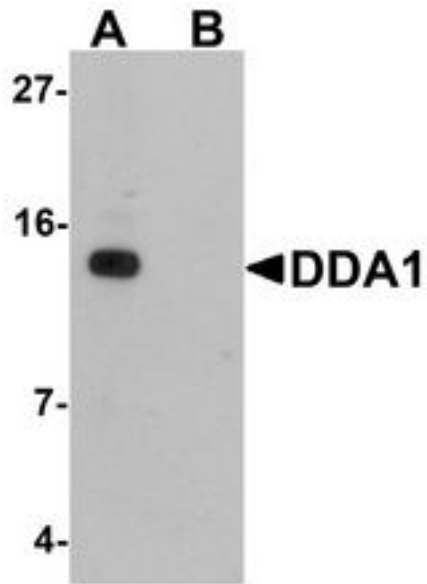
Human Kidney: Formalin-Fixed, Paraffin-Embedded (FFPE)

Immunofluorescence Image:



Immunofluorescence of DDA1 in mouse heart tissue with DDA1 antibody at 20 $\mu\text{g/mL}$.

Western Blot Image:



Western blot analysis of DDA1 in mouse heart tissue lysate with DDA1 antibody at 1 ug/ml in (A) the absence and (B) the presence of blocking peptide

Requested From:

Japan

Laboratory Reagent For In Vitro Research Use Only

Not for resale without prior written consent from LifeSpan BioSciences, Inc.

Created on 9/24/2014

© 2014 LifeSpan BioSciences