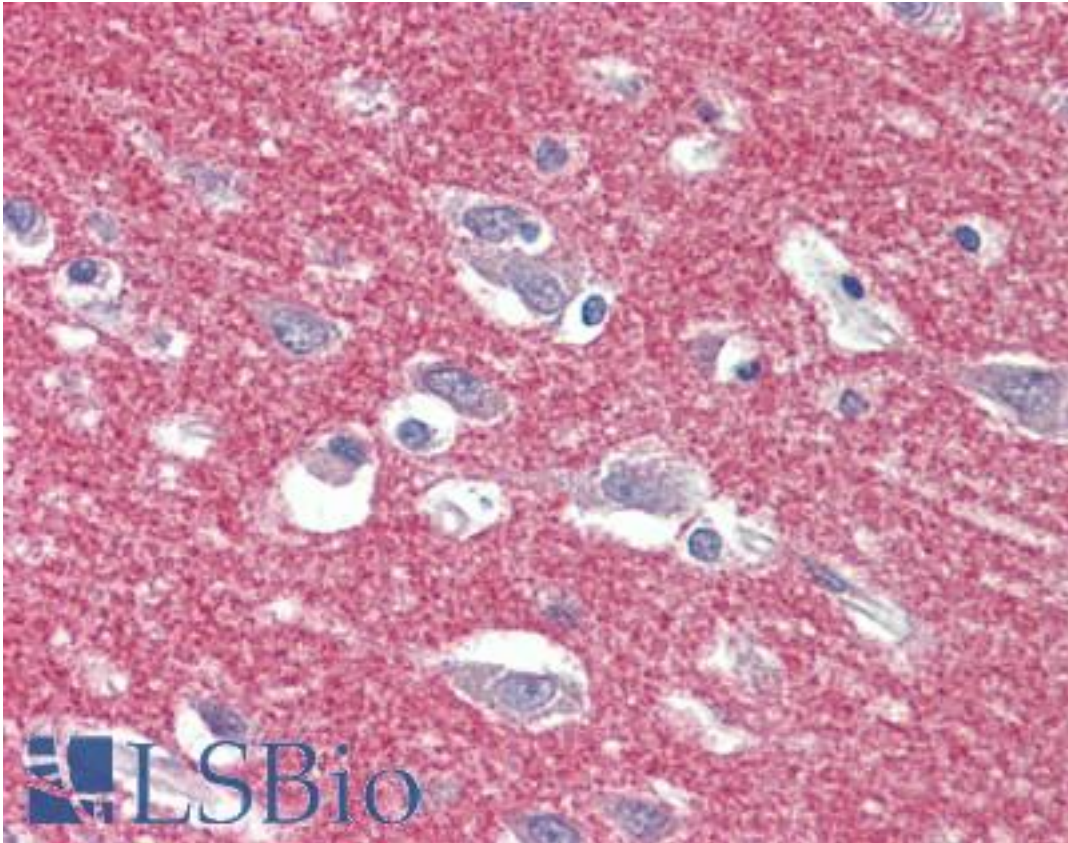


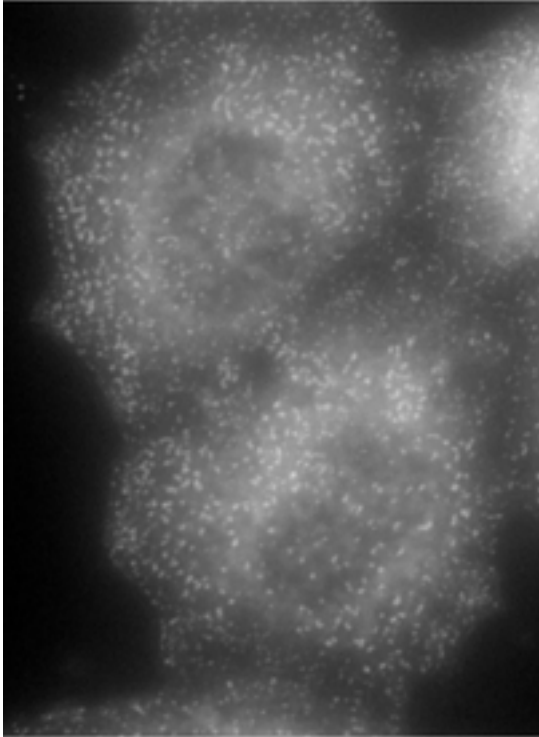
AP2A1 / AP2-Alpha Goat anti-Human Polyclonal (aa706-727) Antibody - LS-B9566 - LSBio	
CatalogID:	LS-B9566
Validation:	This antibody replaces catalog number LS-C186441. It has been validated for use in the following assays: IHC-P.
Target:	adaptor-related protein complex 2, alpha 1 subunit (AP2A1)
Synonyms:	AP2A1 Antibody, Adaptin, alpha A Antibody, ADTAA Antibody, Alpha-adaptin A Antibody, Alpha1-adaptin Antibody, AP-2 complex subunit alpha-1 Antibody, AP2 Alpha Antibody, CLAPA1 Antibody, AP2-alpha Antibody
Host	AP2A1 antibody was produced in Goat
Clonality:	Polyclonal
Immunogen Species:	AP2A1 / AP2-Alpha antibody was raised against Human
Antigen Type:	Synthetic peptide
Immunogen:	AP2A1 / AP2-Alpha antibody was raised against synthetic peptide C-ELEPPAPESPMALLADPAPAAD from an internal region of human AP2A1 / AP2-Alpha (NP_055018.2). Percent identity by BLAST analysis: Human, Chimpanzee, Gorilla, Gibbon, Monkey, Marmoset, Mouse, Ferret, Dog, Cat, Panda, Horse, Rabbit, Pig (100%); Rat (95%); Opossum, Guinea pig (91%).
Specificity:	Human AP2A1 / AP2-Alpha. This antibody is expected to recognize reported isoform 1 (NP_055018.2) only.
Epitope:	aa706-727
Reactivity:	Human, Chimpanzee, Gorilla, Gibbon, Monkey, Mouse, Dog, Horse, Pig, Rabbit
Purification:	Immunoaffinity purified
Presentation:	Tris-buffered saline, pH 7.3, 0.5% BSA, 0.02% sodium azide
Recommended Storage:	Store at -20°C. Minimize freezing and thawing.
Usage Summary:	Peptide ELISA: antibody detection limit dilution 1:128000. Western blot: Approx 110kD band observed in Human Brain (Frontal Cortex) lysates (calculated MW of 108kD according to NP_055018.2). The same band is observed in Mouse Brain, but not in Mouse Liver or Mouse Kidney lysates. Recommended concentration: 0.01-0.03 ug/ml. Immunocytochemistry: HeLa stably expressing a chimeric construct including the brain-specific splice variant of Mouse Ap2a1, showing clathrin-coated pits and vesicles budding from the plasma membrane.
Uses:	IHC - Paraffin (5 µg/ml), Western blot (0.01 - 0.03 µg/ml), ELISA (1:128000) (Optimal dilution to be determined by the researcher)
Size:	50 µg
Concentration:	0.5 mg/ml

Immunohistochemistry Image:



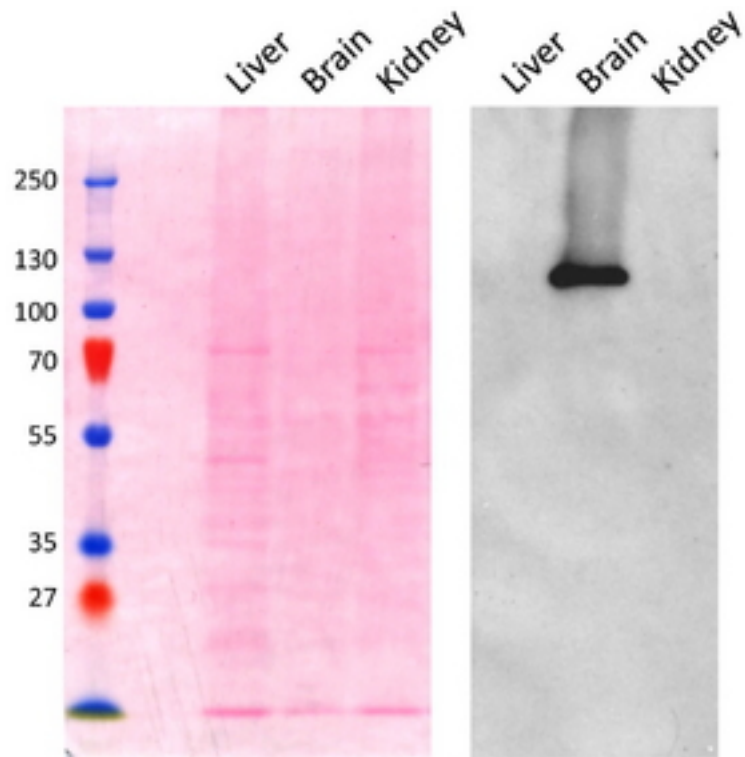
Human Brain, Cortex: Formalin-Fixed, Paraffin-Embedded (FFPE)

Immunocytochemistry Image:



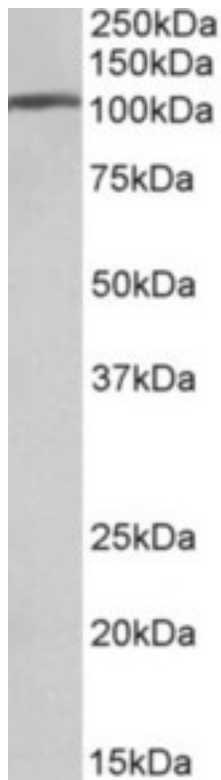
AP2A1 antibody (0.1 ug/ml) staining of methanol-fixed HeLa cells with stably expressing Mouse Ap2a1. Primary incubation was 1 hour. Detected by Alexa Fluor 594. Data obtained from Prof. M Robinson, CIMR, Cambridge, UK

Western Blot Image:



AP2A1 antibody (0.1 ug/ml) staining of Mouse Brain lysate (~5 ug protein in SDSPAGE buffer). The left panel shows the same blot stained with Ponceau red for total protein stain as the loading control before labeling. Primary incubation was 1 hour. Detected by chemiluminescence. Data obtained from Prof. M Robinson, CIMR, Cambridge, UK

Western Blot Image:



AP2A1 antibody (0.01 ug/ml) staining of Human Frontal Cortex lysate (35 ug protein in RIPA buffer). Primary incubation was 1 hour. Detected by chemiluminescence.

Requested From:

Japan

Laboratory Reagent For In Vitro Research Use Only

Not for resale without prior written consent from LifeSpan BioSciences, Inc.

Created on 9/24/2014

© 2014 LifeSpan BioSciences