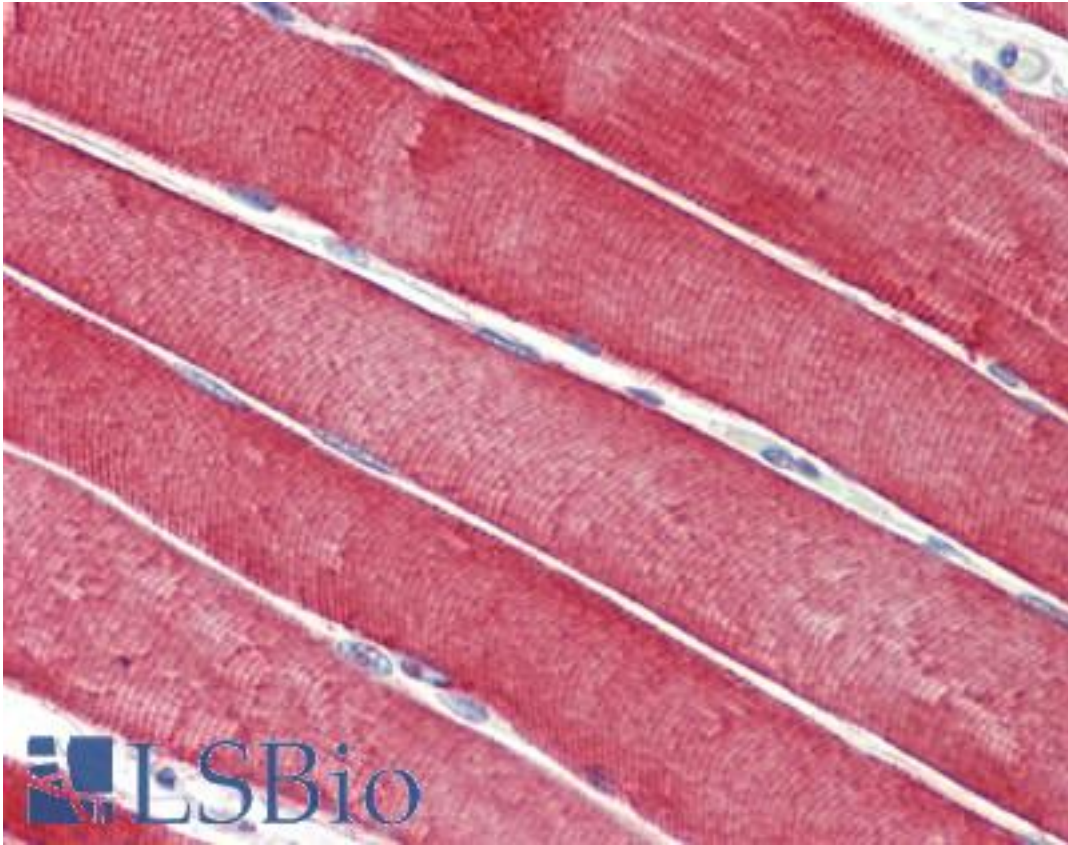


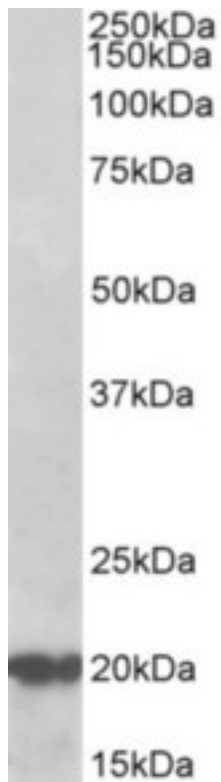
DNAJC5 / CSP Goat anti-Human Polyclonal (aa177-191) Antibody - LS-B9564 - LSBio	
<b>CatalogID:</b>	LS-B9564
<b>Validation:</b>	This antibody replaces catalog number LS-C186480. It has been validated for use in the following assays: IHC-P.
<b>Target:</b>	DnaJ (Hsp40) homolog, subfamily C, member 5 (DNAJC5)
<b>Synonyms:</b>	DNAJC5 Antibody, CLN4 Antibody, CLN4B Antibody, CSP Antibody, Cysteine string protein alpha Antibody, DNAJC5A Antibody, Cysteine string protein Antibody
<b>Host</b>	DNAJC5 antibody was produced in Goat
<b>Clonality:</b>	Polyclonal
<b>Immunogen Species:</b>	DNAJC5 / CSP antibody was raised against Human
<b>Antigen Type:</b>	Synthetic peptide
<b>Immunogen:</b>	DNAJC5 / CSP antibody was raised against synthetic peptide C-SATETTQLTADSHPS from the C-terminus of human DNAJC5 / CSP (NP_058055.1). Percent identity by BLAST analysis: Human, Chimpanzee, Gorilla, Orangutan, Gibbon, Monkey, Galago, Marmoset, Mouse, Rat, Ferret, Panda, Dog, Cat, Bovine, Horse, Rabbit, Guinea pig, Turkey, Zebra finch, Chicken, Platypus, Lizard (100%); Xenopus (87%); Salmon, Stickleback, Medaka, Pufferfish, Zebrafish (80%).
<b>Specificity:</b>	Human DNAJC5 / CSP
<b>Epitope:</b>	aa177-191
<b>Reactivity:</b>	Human, Chimpanzee, Gorilla, Orangutan, Gibbon, Monkey, Mouse, Rat, Bovine, Dog, Guinea pig, Horse, Rabbit, Chicken
<b>Purification:</b>	Immunoaffinity purified
<b>Presentation:</b>	Tris-buffered saline, pH 7.3, 0.5% BSA, 0.02% sodium azide
<b>Recommended Storage:</b>	Store at -20°C. Minimize freezing and thawing.
<b>Usage Summary:</b>	Peptide ELISA: antibody detection limit dilution 1:64000. Western blot: Approx 20kD band observed in Human Brain (Cerebellum) lysates (calculated MW of 22.1kD according to NP_058055.1). Recommended concentration: 0.5-1.5 ug/ml.
<b>Uses:</b>	IHC - Paraffin (5 µg/ml), Western blot (0.5 - 1.5 µg/ml), ELISA (1:64000) (Optimal dilution to be determined by the researcher)
<b>Size:</b>	50 µg
<b>Concentration:</b>	0.5 mg/ml

**Immunohistochemistry Image:**



Human Skeletal Muscle: Formalin-Fixed, Paraffin-Embedded (FFPE)

**Western Blot Image:**



DNAJC5 antibody (0.5 ug/ml) staining of Human Cerebellum lysate (35 ug protein in RIPA buffer). Primary incubation was 1 hour. Detected by chemiluminescence.

**Requested From:**

Japan

Laboratory Reagent For In Vitro Research Use Only

Not for resale without prior written consent from LifeSpan BioSciences, Inc.

Created on 9/24/2014

© 2014 LifeSpan BioSciences