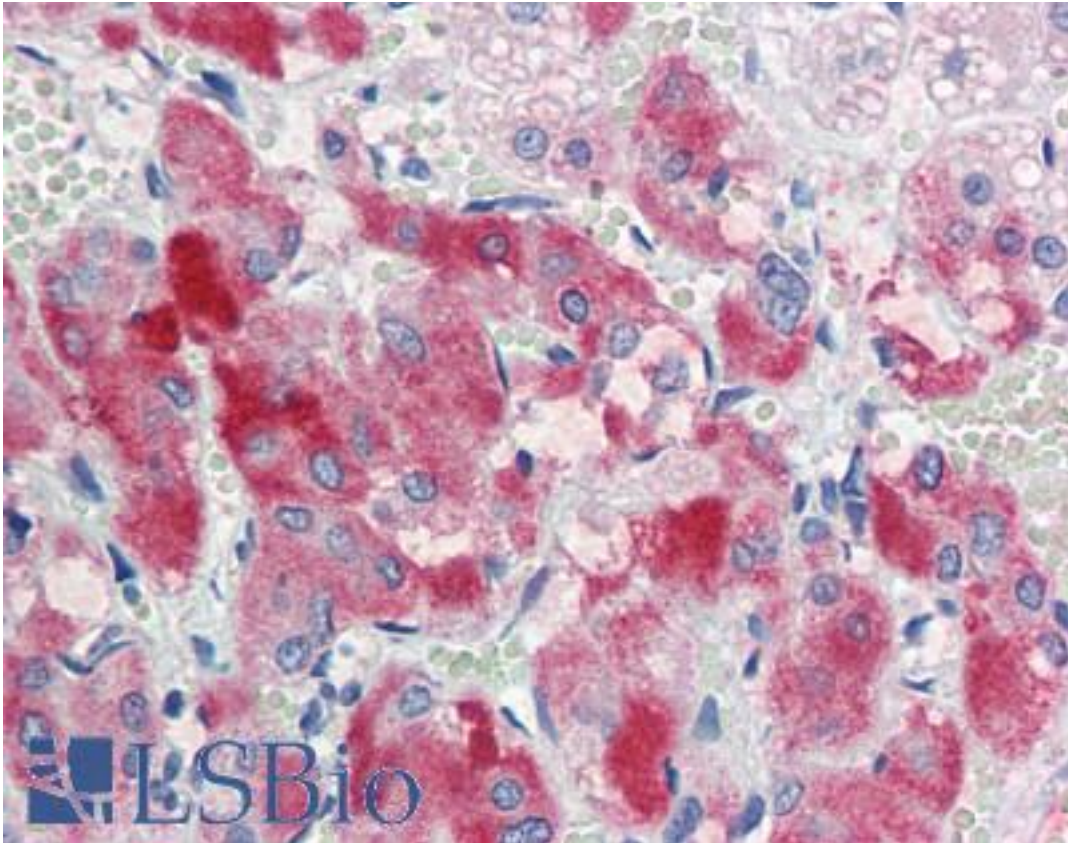


ENC1 Goat anti-Human Polyclonal (Internal) Antibody - LS-B9563 - LSBio

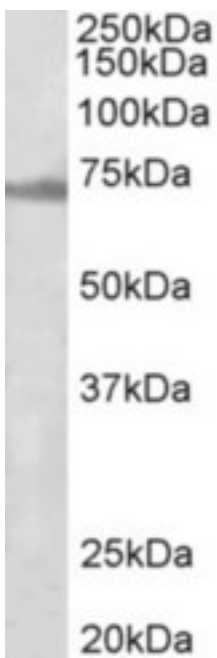
CatalogID:	LS-B9563
Validation:	This antibody replaces catalog number LS-C186491. It has been validated for use in the following assays: IHC-P.
Target:	ectodermal-neural cortex 1 (with BTB domain) (ENC1)
Synonyms:	ENC1 Antibody, ENC-1 Antibody, Kelch-like 35 Antibody, Kelch-like protein 37 Antibody, Nuclear matrix protein NRP/B Antibody, KLHL37 Antibody, TP53110 Antibody, NRPB Antibody, p53-induced gene 10 protein Antibody, PIG10 Antibody, Ectodermal-neural cortex Antibody
Host	ENC1 antibody was produced in Goat
Clonality:	Polyclonal
Immunogen Species:	ENC1 antibody was raised against Human
Antigen Type:	Synthetic peptide
Immunogen:	ENC1 antibody was raised against synthetic peptide TSVSHDKLPKVQC from an internal region of human ENC1 (NP_003624.1; NP_001243505.1). Percent identity by BLAST analysis: Human, Mouse, Zebra finch, Lizard, Xenopus (100%).
Specificity:	Human ENC1. This antibody is expected to recognize both reported isoforms (NP_003624.1; NP_001243505.1). Reported variants represent identical protein: NP_001243503.1, NP_001243504.1, NP_003624.1.
Epitope:	Internal
Reactivity:	Human, Mouse, Xenopus
Purification:	Immunoaffinity purified
Presentation:	Tris-buffered saline, pH 7.3, 0.5% BSA, 0.02% sodium azide
Recommended Storage:	Store at -20°C. Minimize freezing and thawing.
Usage Summary:	Peptide ELISA: antibody detection limit dilution 1:128000. Western blot: Approx 70kD band observed in Rat Ovary lysates (calculated MW of 66.1kD according to Rat NP_001003401.1. Recommended concentration: 1-3 ug/ml.
Uses:	IHC - Paraffin (5 µg/ml), Western blot (1 - 3 µg/ml), ELISA (1:128000) (Optimal dilution to be determined by the researcher)
Size:	50 µg
Concentration:	0.5 mg/ml

Immunohistochemistry Image:



Human Adrenal: Formalin-Fixed, Paraffin-Embedded (FFPE)

Western Blot Image:



ENC1 antibody (1 ug/ml) staining of Rat Ovary lysate (35 ug protein in RIPA buffer). Primary incubation was 1 hour. Detected by chemiluminescence.

Requested From:	Japan
Laboratory Reagent For In Vitro Research Use Only	
Not for resale without prior written consent from LifeSpan BioSciences, Inc.	
Created on 9/24/2014	
© 2014 LifeSpan BioSciences	