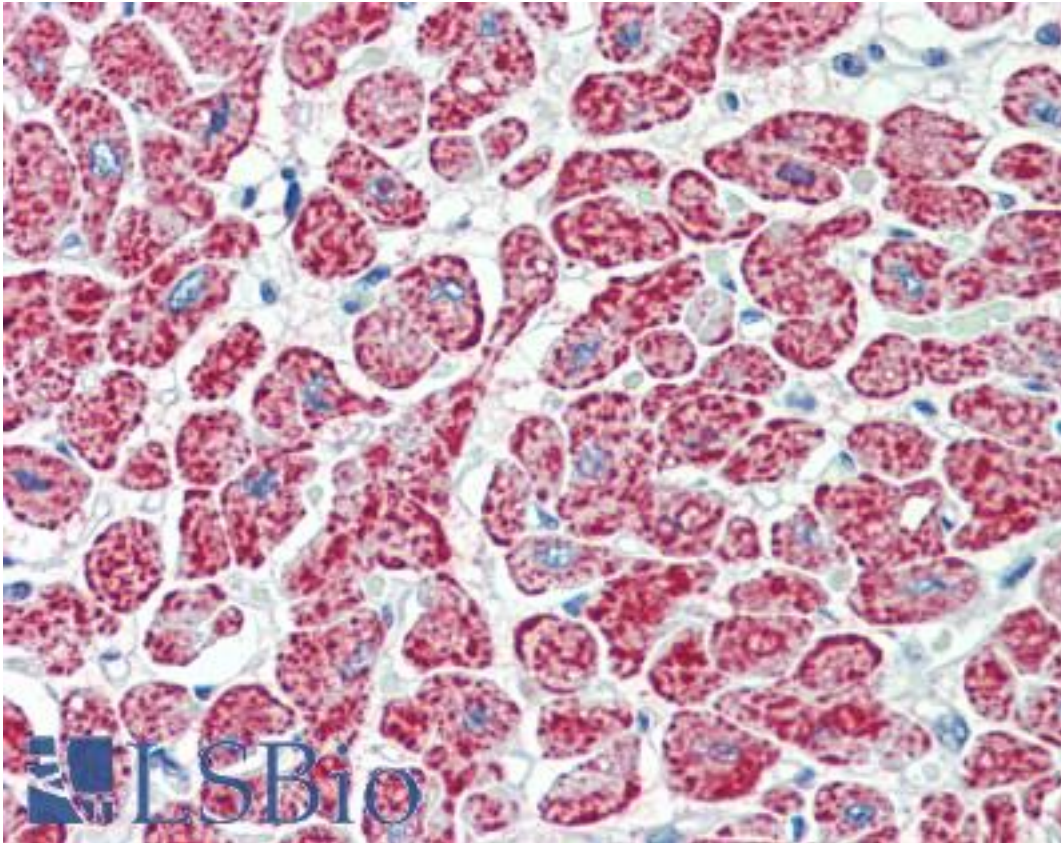


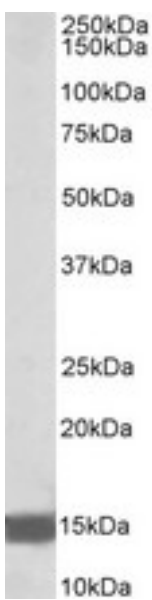
| NDUFA7 Goat anti-Human Polyclonal (Internal) Antibody - LS-B9562 - LSBio | |
|--|--|
| CatalogID: | LS-B9562 |
| Validation: | This antibody replaces catalog number LS-C155058. It has been validated for use in the following assays: IHC-P. |
| Target: | NADH dehydrogenase (ubiquinone) 1 alpha subcomplex, 7, 14.5kDa (NDUFA7) |
| Synonyms: | NDUFA7 Antibody, CI-B14.5a Antibody, B14.5a Antibody, Complex I B14.5a subunit Antibody, Complex I-B14.5a Antibody |
| Host | NDUFA7 antibody was produced in Goat |
| Clonality: | Polyclonal |
| Immunogen Species: | NDUFA7 antibody was raised against Human |
| Antigen Type: | Synthetic peptide |
| Immunogen: | NDUFA7 antibody was raised against synthetic peptide C-PKLPVGPSHKLSNN from an internal region of human NDUFA7 (NP_004992.2). Percent identity by BLAST analysis: Human, Chimpanzee, Gorilla, Orangutan, Mouse, Rat, Hamster, Bovine, Rabbit, Porcine, Opossum (100%); Gibbon, Monkey, Marmoset, Elephant, Panda, Dog, Bat, Horse, Guinea pig (93%); Galago, Zebrafish (86%). |
| Specificity: | Human NDUFA7. |
| Epitope: | Internal |
| Reactivity: | Human, Chimpanzee, Gorilla, Orangutan, Mouse, Rat, Bovine, Hamster, Rabbit |
| Purification: | Immunoaffinity purified |
| Presentation: | Tris-buffered saline, pH 7.3, 0.5% BSA, 0.02% sodium azide |
| Recommended Storage: | Store at -20°C. Minimize freezing and thawing. |
| Usage Summary: | Peptide ELISA: antibody detection limit dilution 1:128000. Western blot: Approx 15kD band observed in Human, Mouse and Rat Heart lysates (calculated MW of 12.6kD according to NP_004992.2). Recommended concentration: 0.03-0.1 ug/ml. |
| Uses: | IHC - Paraffin (5 µg/ml), Western blot (0.03 - 0.1 µg/ml), ELISA (1:128000) (Optimal dilution to be determined by the researcher) |
| Size: | 50 µg |
| Concentration: | 0.5 mg/ml |

Immunohistochemistry Image:



Human Heart: Formalin-Fixed, Paraffin-Embedded (FFPE)

Western Blot Image:



NDUFA7 antibody (0.1 ug/ml) staining of Human Heart lysate (35 ug protein in RIPA buffer). Primary incubation was 1 hour. Detected by chemiluminescence.

Requested From:

Japan

Laboratory Reagent For In Vitro Research Use Only

Not for resale without prior written consent from LifeSpan BioSciences, Inc.

Created on 9/24/2014

© 2014 LifeSpan BioSciences