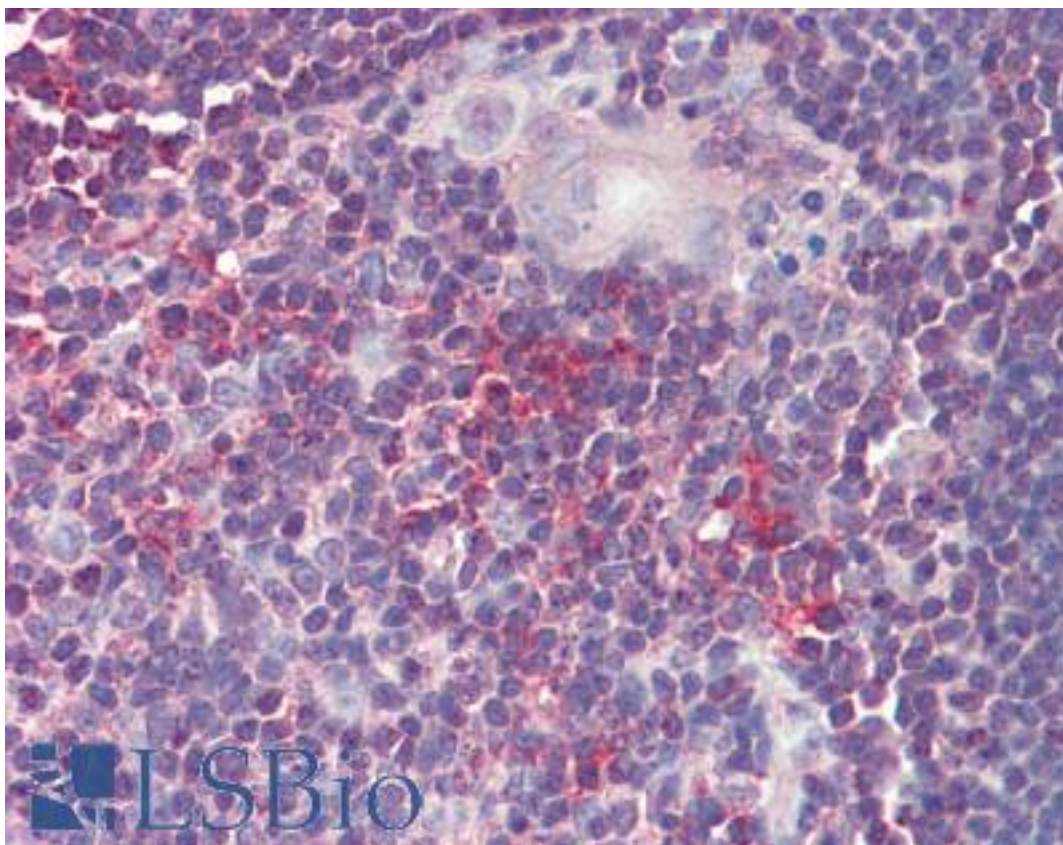


## ARF4 Goat anti-Human Polyclonal (aa137-150) Antibody - LS-B9560 - LSBio

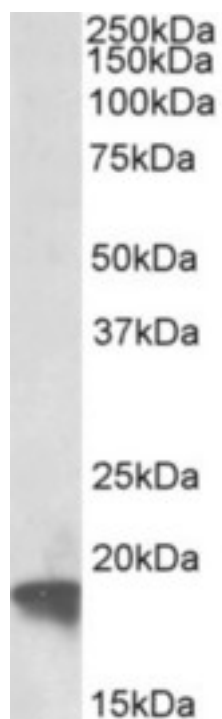
<b>CatalogID:</b>	LS-B9560
<b>Validation:</b>	This antibody replaces catalog number LS-C155042. It has been validated for use in the following assays: IHC-P.
<b>Target:</b>	ADP-ribosylation factor 4 (ARF4)
<b>Synonyms:</b>	ARF4 Antibody, ARF2 Antibody, ADP-ribosylation factor 2 Antibody, ADP-ribosylation factor 4 Antibody
<b>Family / Subfamily:</b>	Ras GTPase superfamily IPR001806 / not assigned-Ras GTPase superfamily IPR001806
<b>Host</b>	ARF4 antibody was produced in Goat
<b>Clonality:</b>	Polyclonal
<b>Immunogen Species:</b>	ARF4 antibody was raised against Human
<b>Antigen Type:</b>	Synthetic peptide
<b>Immunogen:</b>	ARF4 antibody was raised against synthetic peptide C-SEMTDKLGLQSLRN from an internal region of human ARF4 (NP_001651.1). Percent identity by BLAST analysis: Human, Chimpanzee, Gorilla, Orangutan, Gibbon, Monkey, Galago, Marmoset, Mouse, Rat, Sheep, Hamster, Elephant, Panda, Bat, Dog, Bovine, Horse, Rabbit, Porcine, Opossum, Guinea pig, Turkey, Zebra finch, Chicken, Lizard (100%); Platypus, Xenopus (93%); Felinefish, Zebrafish (86%).
<b>Specificity:</b>	Human ARF4.
<b>Epitope:</b>	aa137-150
<b>Reactivity:</b>	Human, Chimpanzee, Gorilla, Orangutan, Gibbon, Monkey, Mouse, Rat, Bat, Bovine, Dog, Guinea pig, Hamster, Horse, Rabbit, Sheep, Chicken
<b>Purification:</b>	Immunoaffinity purified
<b>Presentation:</b>	Tris-buffered saline, pH 7.3, 0.5% BSA, 0.02% sodium azide
<b>Recommended Storage:</b>	Store at -20°C. Minimize freezing and thawing.
<b>Usage Summary:</b>	Peptide ELISA: antibody detection limit dilution 1:128000. Western blot: Approx 19kD band observed in lysates of cell line HeLa (calculated MW of 20.5kD according to NP_001651.1). Recommended concentration: 0.3-1 ug/ml.
<b>Uses:</b>	IHC - Paraffin (5 µg/ml), Western blot (0.3 - 1 µg/ml), ELISA (1:128000) (Optimal dilution to be determined by the researcher)
<b>Size:</b>	50 µg
<b>Concentration:</b>	0.5 mg/ml

**Immunohistochemistry Image:**



Human Thymus: Formalin-Fixed, Paraffin-Embedded (FFPE)

**Western Blot Image:**



ARF4 antibody (0.5 ug/ml) staining of HeLa lysate (35 ug protein in RIPA buffer). Primary incubation was 1 hour. Detected by chemiluminescence.

**Requested From:**

Japan

Laboratory Reagent For In Vitro Research Use Only

Not for resale without prior written consent from LifeSpan BioSciences, Inc.

Created on 9/24/2014

© 2014 LifeSpan BioSciences