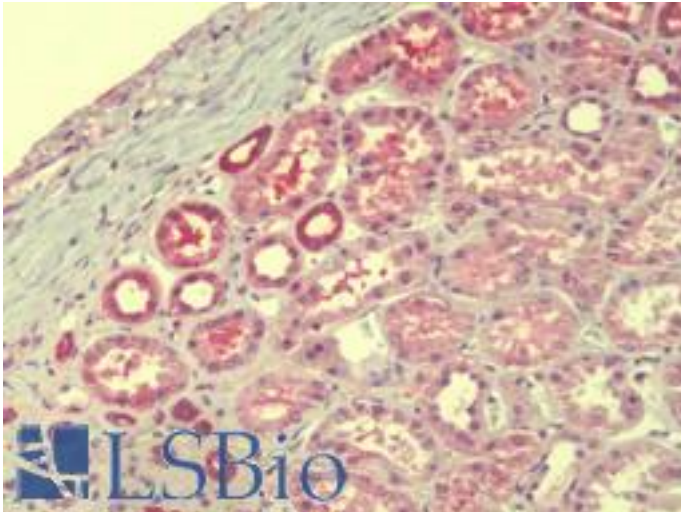


**TMEM147 Rabbit anti-Human Polyclonal (Internal) Antibody - LS-B9558 - LSBio**

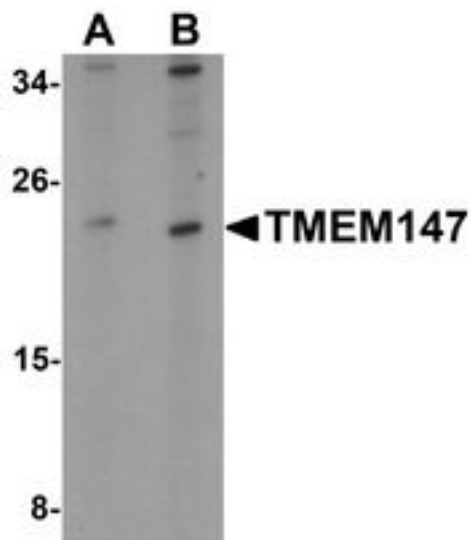
<b>CatalogID:</b>	LS-B9558
<b>Validation:</b>	This antibody replaces catalog number LS-C144411. It has been validated for use in the following assays: IHC-P.
<b>Target:</b>	Transmembrane Protein 147 (TMEM147)
<b>Synonyms:</b>	TMEM147 Antibody, Transmembrane protein 147 Antibody, NIFIE14 Antibody, Protein NIFIE 14 Antibody
<b>Host</b>	TMEM147 antibody was produced in Rabbit
<b>Clonality:</b>	Polyclonal
<b>Immunogen Species:</b>	TMEM147 antibody was raised against Human
<b>Antigen Type:</b>	Synthetic peptide
<b>Immunogen:</b>	TMEM147 antibody was raised against a 13 amino acid peptide near the center of human TMEM147
<b>Specificity:</b>	Human TMEM147.
<b>Epitope:</b>	Internal
<b>Reactivity:</b>	Human, Mouse, Rat
<b>Purification:</b>	Immunoaffinity purified
<b>Presentation:</b>	PBS, 0.02% sodium azide
<b>Recommended Storage:</b>	Short term 4°C, long term aliquot and store at -20°C, avoid freeze thaw cycles. Store undiluted.
<b>Uses:</b>	IHC - Paraffin (5 µg/ml), Western blot (1 - 2 µg/ml), ELISA (Optimal dilution to be determined by the researcher)
<b>Size:</b>	50 µg
<b>Concentration:</b>	1 mg/ml

**Immunohistochemistry Image:**



Human Kidney: Formalin-Fixed, Paraffin-Embedded (FFPE)

**Western Blot Image:**



Western blot analysis of TMEM147 in Daudi cell lysate with TMEM147 antibody at (A) 1 and (B) 2 ug/ml.

**Requested From:**

Japan

Laboratory Reagent For In Vitro Research Use Only

Not for resale without prior written consent from LifeSpan BioSciences, Inc.

Created on 9/24/2014

© 2014 LifeSpan BioSciences