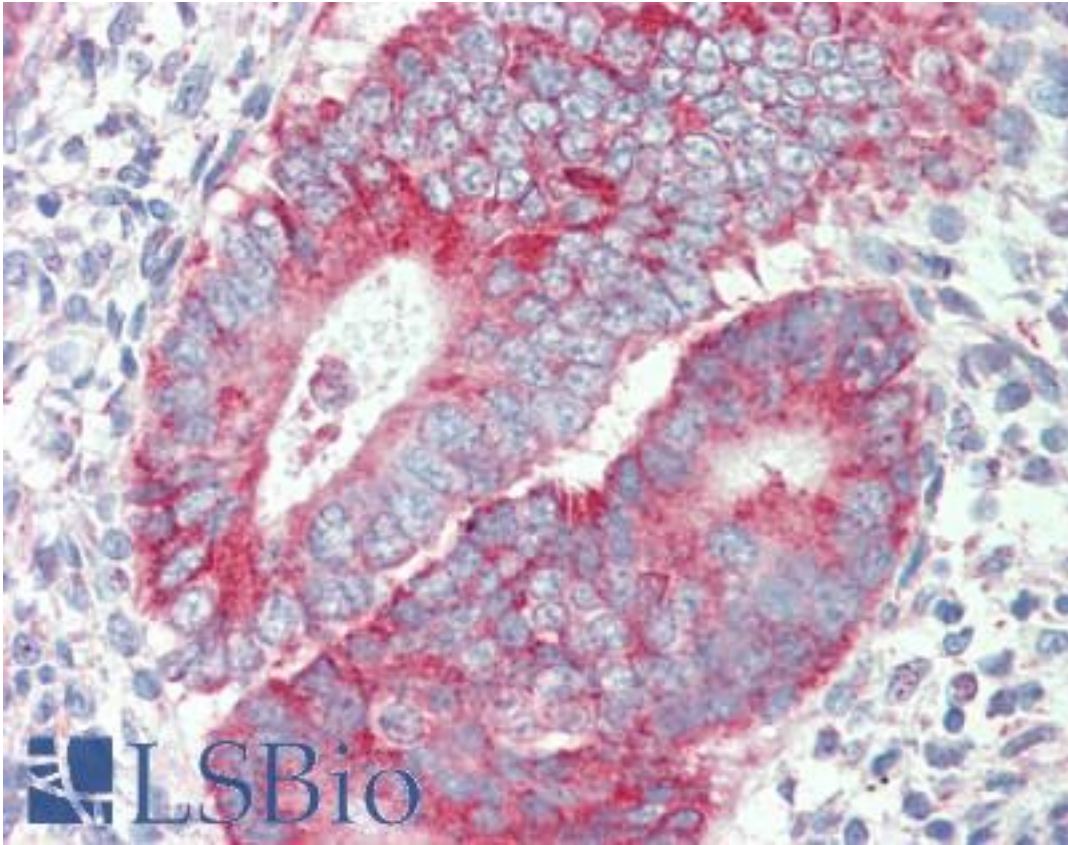


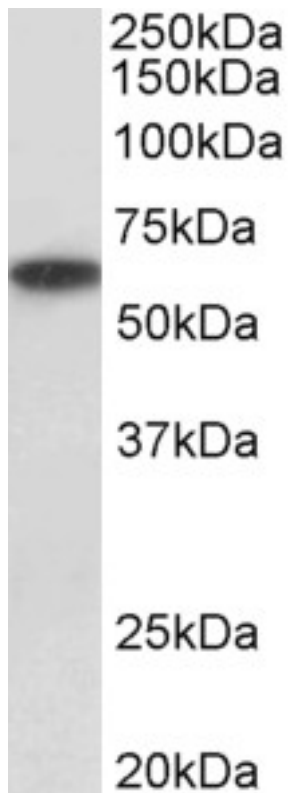
P2RX4 / P2X4 Goat anti-Mouse Polyclonal (Internal) Antibody - LS-B9556 - LSBio	
<b>CatalogID:</b>	LS-B9556
<b>Validation:</b>	This antibody replaces catalog number LS-C154979. It has been validated for use in the following assays: IHC-P.
<b>Target:</b>	purinergic receptor P2X, ligand-gated ion channel, 4 (P2RX4)
<b>Synonyms:</b>	P2RX4 Antibody, ATP receptor Antibody, p2X purinoceptor 4 Antibody, p2X4R Antibody, p2RX4 Antibody, p2X receptor 4 Antibody, p2X4 Antibody, p2X4 purinoceptor Antibody, Purinergic receptor P2X4 Antibody, Purinoceptor P2X4 Antibody, Purinergic receptor Antibody, p2X receptor, subunit 4 Antibody
<b>Family / Subfamily:</b>	Ion Channel / P2X receptor
<b>Host</b>	P2RX4 antibody was produced in Goat
<b>Clonality:</b>	Polyclonal
<b>Immunogen Species:</b>	P2RX4 / P2X4 antibody was raised against Mouse
<b>Antigen Type:</b>	Synthetic peptide
<b>Immunogen:</b>	P2RX4 / P2X4 antibody was raised against synthetic peptide C-ETDSVVSSVTTKAK from an internal region of mouse P2RX4 / P2X4 (NP_035156.2). Percent identity by BLAST analysis: Mouse, Rat, Hamster, Panda, Dog, Porcine (100%); Human, Chimpanzee, Gorilla, Orangutan, Gibbon, Monkey, Marmoset, Elephant, Bat, Bovine, Guinea pig, Turkey, Zebra finch, Chicken, Platypus (93%); Galago, Lizard (86%).
<b>Specificity:</b>	Mouse P2RX4 / P2X4.
<b>Epitope:</b>	Internal
<b>Reactivity:</b>	Mouse, Human, Rat, Dog, Hamster
<b>Purification:</b>	Immunoaffinity purified
<b>Presentation:</b>	Tris-buffered saline, pH 7.3, 0.5% BSA, 0.02% sodium azide
<b>Recommended Storage:</b>	Store at -20°C. Minimize freezing and thawing.
<b>Usage Summary:</b>	Peptide ELISA: antibody detection limit dilution 1:16000. Western blot: Approx 60kD band observed in Human Kidney and Liver lysates (calculated MW of 43.5kD according to NP_002551.2). The observed molecular weight corresponds to earlier findings in literature with different antibodies (Brown et al, J Biol Chem. 2004 Sep 17;279(38):39485-94. PMID: 15262999). Recommended concentration: 1-3 ug/ml.
<b>Uses:</b>	IHC - Paraffin (5 µg/ml), Western blot (1 - 3 µg/ml), ELISA (1:16000) (Optimal dilution to be determined by the researcher)
<b>Size:</b>	50 µg
<b>Concentration:</b>	0.5 mg/ml

**Immunohistochemistry Image:**



Human Uterus: Formalin-Fixed, Paraffin-Embedded (FFPE)

**Western Blot Image:**



P2RX4 antibody (1 ug/ml) staining of Human Kidney lysate (35 ug protein in RIPA buffer). Primary incubation was 1 hour. Detected by chemiluminescence.

**Requested From:**

Japan

Laboratory Reagent For In Vitro Research Use Only

Not for resale without prior written consent from LifeSpan BioSciences, Inc.

Created on 9/24/2014

© 2014 LifeSpan BioSciences