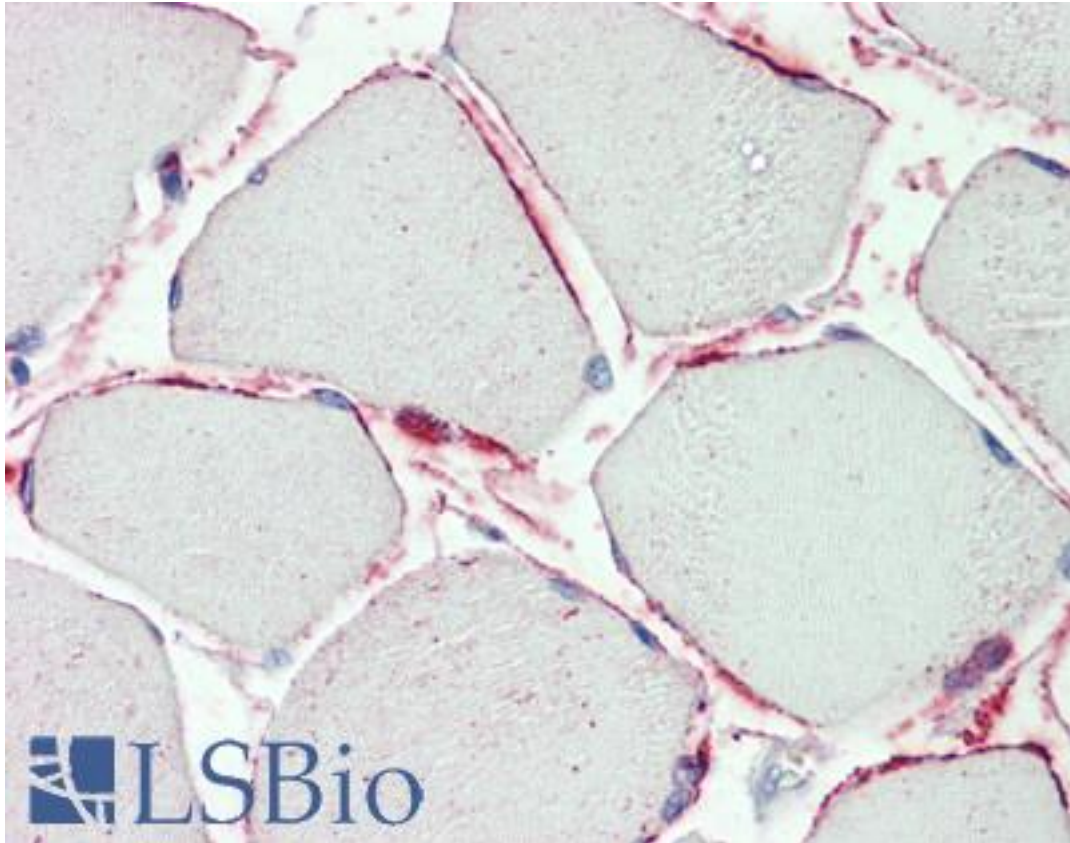


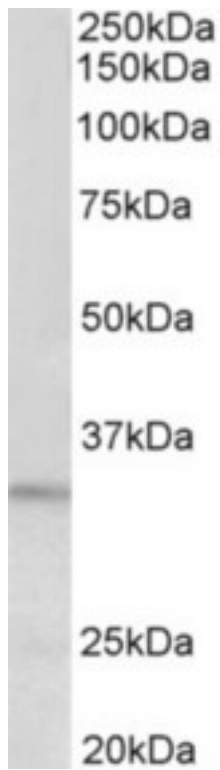
PI15 Goat anti-Human Polyclonal (aa128-141) Antibody - LS-B9555 - LSBio	
CatalogID:	LS-B9555
Validation:	This antibody replaces catalog number LS-C154967. It has been validated for use in the following assays: IHC-P.
Target:	peptidase inhibitor 15 (PI15)
Synonyms:	PI15 Antibody, 25 kDa trypsin inhibitor Antibody, CRISP-8 Antibody, CRISP8 Antibody, p24TI Antibody, Peptidase inhibitor 15 Antibody, PI-15 Antibody, p25TI Antibody, Protease inhibitor 15 Antibody, SugarCrisp Antibody
Host	PI15 antibody was produced in Goat
Clonality:	Polyclonal
Immunogen Species:	PI15 antibody was raised against Human
Antigen Type:	Synthetic peptide
Immunogen:	PI15 antibody was raised against synthetic peptide C-RTGRYRSILQLVKP from an internal region of human PI15 (NP_056970.1). Percent identity by BLAST analysis: Human, Chimpanzee, Gorilla, Orangutan, Gibbon, Monkey, Galago, Marmoset, Mouse, Rat, Elephant, Panda, Dog, Bat, Bovine, Horse, Rabbit, Porcine, Opossum, Zebra finch, Chicken, Platypus, Lizard, Seabass, Stickleback, Medaka, Pufferfish, Zebrafish (100%); Guinea pig, Xenopus (93%).
Specificity:	Human PI15.
Epitope:	aa128-141
Reactivity:	Human, Chimpanzee, Gorilla, Orangutan, Gibbon, Monkey, Mouse, Rat, Bat, Bovine, Dog, Horse, Rabbit, Chicken, Zebrafish
Purification:	Immunoaffinity purified
Presentation:	Tris-buffered saline, pH 7.3, 0.5% BSA, 0.02% sodium azide
Recommended Storage:	Store at -20°C. Minimize freezing and thawing.
Usage Summary:	Peptide ELISA: antibody detection limit dilution 1:1000. Western blot: Approx 33kD band observed in lysates of cell line HeLa (calculated MW of 29.1kD according to NP_056970.1). Recommended concentration: 0.3-1 ug/ml.
Uses:	IHC - Paraffin (5 µg/ml), Western blot (0.3 - 1 µg/ml), ELISA (1:1000) (Optimal dilution to be determined by the researcher)
Size:	50 µg
Concentration:	0.5 mg/ml

Immunohistochemistry Image:



Human Skeletal Muscle: Formalin-Fixed, Paraffin-Embedded (FFPE)

Western Blot Image:



PI15 antibody (0.3 ug/ml) staining of HeLa lysate (35 ug protein in RIPA buffer). Primary incubation was 1 hour. Detected by chemiluminescence.

Requested From:

Japan

Laboratory Reagent For In Vitro Research Use Only

Not for resale without prior written consent from LifeSpan BioSciences, Inc.

Created on 9/24/2014

© 2014 LifeSpan BioSciences