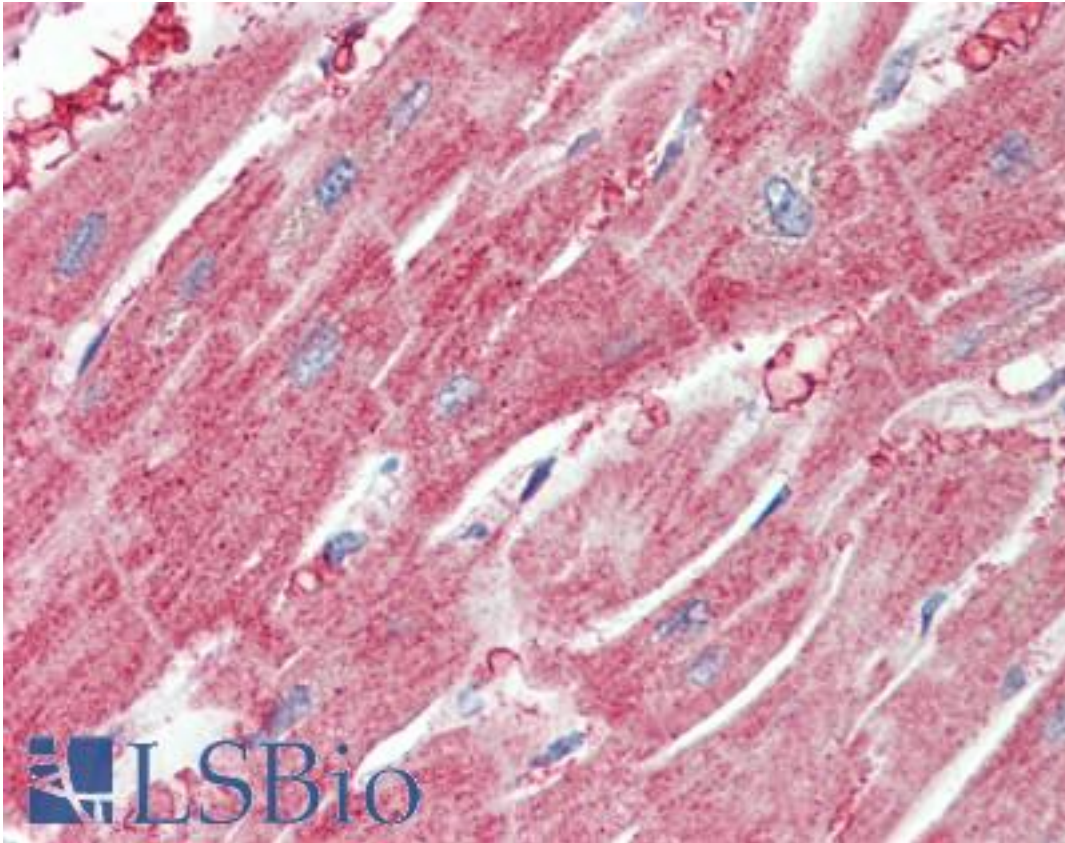


ARPC1A Goat anti-Human Polyclonal (C-Terminus) Antibody - LS-B9553 - LSBio

CatalogID:	LS-B9553
Validation:	This antibody replaces catalog number LS-C154964. It has been validated for use in the following assays: IHC-P.
Target:	actin related protein 2/3 complex, subunit 1A, 41kDa (ARPC1A)
Synonyms:	ARPC1A Antibody, Arc40 Antibody, SOP2L Antibody, SOP2-like protein Antibody, SOP2Hs Antibody
Host	ARPC1A antibody was produced in Goat
Clonality:	Polyclonal
Immunogen Species:	ARPC1A antibody was raised against Human
Antigen Type:	Synthetic peptide
Immunogen:	ARPC1A antibody was raised against synthetic peptide C-DFKLESSIQGLR from the C-terminus of human ARPC1A (NP_006400.2; NP_001177925.1). Percent identity by BLAST analysis: Human, Chimpanzee, Gorilla, Orangutan, Gibbon, Monkey, Galago, Marmoset, Mouse, Rat, Hamster, Elephant, Panda, Dog, Bat, Bovine, Horse, Porcine, Opossum, Guinea pig, Turkey, Zebra finch, Chicken, Lizard, Felinefish, Zebrafish (100%); Platypus (92%); Xenopus, Stickleback, Pufferfish (85%).
Specificity:	Human ARPC1A. This antibody is expected to recognize both reported isoforms (NP_006400.2; NP_001177925.1). No cross-reactivity expected with ARPC1B.
Epitope:	C-Terminus
Reactivity:	Human, Chimpanzee, Gorilla, Orangutan, Gibbon, Monkey, Mouse, Rat, Bat, Bovine, Dog, Guinea pig, Hamster, Horse, Chicken, Zebrafish
Purification:	Immunoaffinity purified
Presentation:	Tris-buffered saline, pH 7.3, 0.5% BSA, 0.02% sodium azide
Recommended Storage:	Store at -20°C. Minimize freezing and thawing.
Usage Summary:	Peptide ELISA: antibody detection limit dilution 1:64000. Western blot: Approx 45kD band observed in lysates of cell line HeLa (calculated MW of 41.6kD according to NP_006400.2). Recommended concentration: 0.3-1 ug/ml.
Uses:	IHC - Paraffin (5 µg/ml), Western blot (0.3 - 1 µg/ml), ELISA (1:64000) (Optimal dilution to be determined by the researcher)
Size:	50 µg
Concentration:	0.5 mg/ml

Immunohistochemistry Image:



Human Heart: Formalin-Fixed, Paraffin-Embedded (FFPE)

Requested From:

Japan

Laboratory Reagent For In Vitro Research Use Only

Not for resale without prior written consent from LifeSpan BioSciences, Inc.

Created on 9/24/2014

© 2014 LifeSpan BioSciences