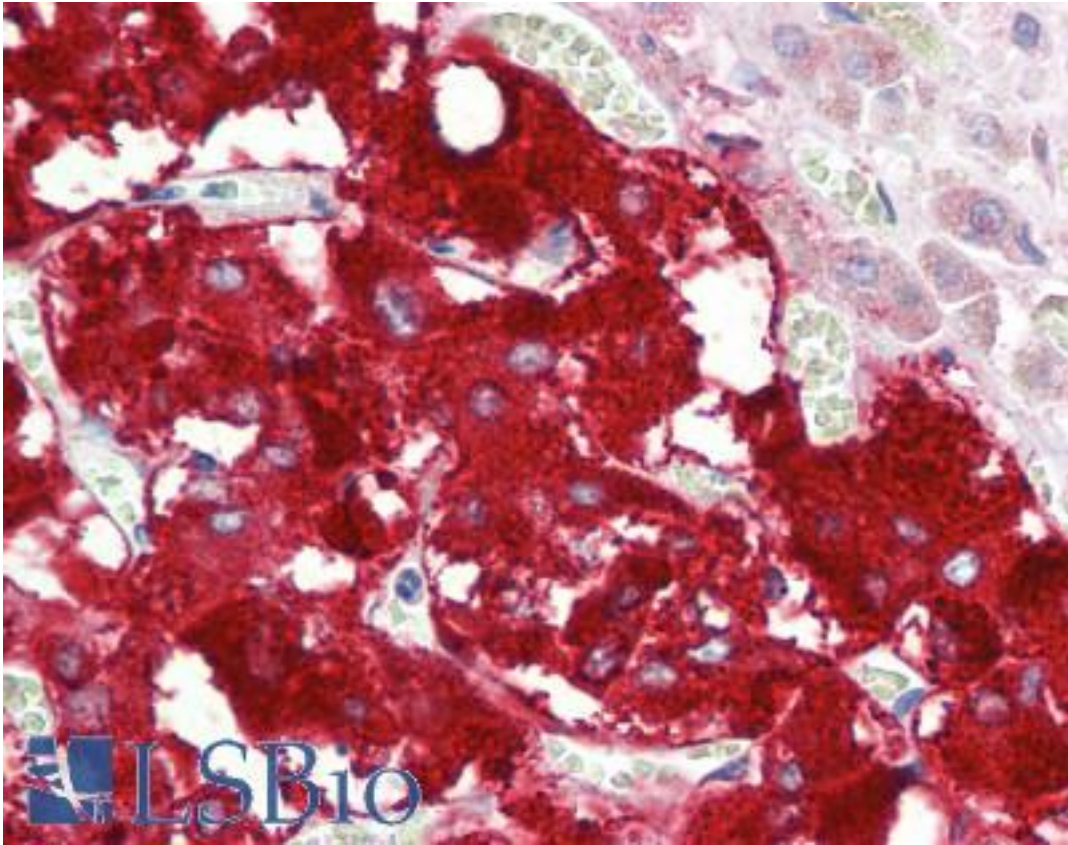


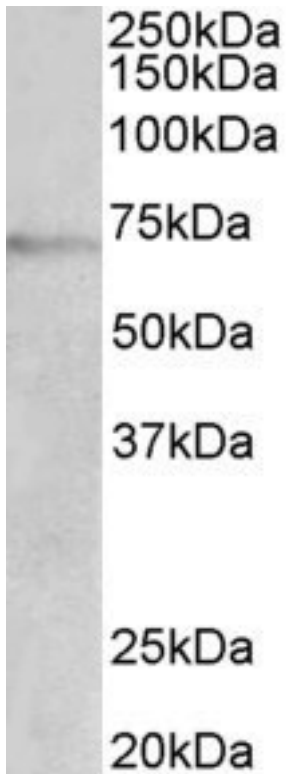
| DBH/Dopamine Beta Hydroxylase Goat anti-Human Polyclonal (aa437-448) Antibody - LS-B9552 - LSBio | |
|--|--|
| CatalogID: | LS-B9552 |
| Validation: | This antibody replaces catalog number LS-C154959. It has been validated for use in the following assays: IHC-P. |
| Target: | dopamine beta-hydroxylase (dopamine beta-monoxygenase) (DBH) |
| Synonyms: | DBH Antibody, Dopamine beta-monoxygenase Antibody, DBM Antibody, Dopamine beta-hydroxylase Antibody |
| Family / Subfamily: | Monoxygenase / Not assigned-Other |
| Host | DBH antibody was produced in Goat |
| Clonality: | Polyclonal |
| Immunogen Species: | DBH/Dopamine Beta Hydroxylase antibody was raised against Human |
| Antigen Type: | Synthetic peptide |
| Immunogen: | DBH/Dopamine Beta Hydroxylase antibody was raised against synthetic peptide C-DNHYSPPHFQEIR from an internal region of human DBH (NP_000778.3). Percent identity by BLAST analysis: Human, Chimpanzee, Gorilla, Orangutan, Gibbon, Monkey, Galago, Mouse, Rat, Hamster, Elephant, Bovine, Rabbit, Guinea pig (100%); Marmoset, Panda, Horse, Porcine, Opossum, Turkey, Zebra finch, Chicken, Platypus, Lizard, Xenopus, Blood fluke, Ant (92%); Dog, Water flea, Beetle (83%). |
| Specificity: | Human DBH. |
| Epitope: | aa437-448 |
| Reactivity: | Human, Chimpanzee, Gorilla, Orangutan, Gibbon, Mouse, Rat, Bovine, Guinea pig, Hamster, Rabbit |
| Purification: | Immunoaffinity purified |
| Presentation: | Tris-buffered saline, pH 7.3, 0.5% BSA, 0.02% sodium azide |
| Recommended Storage: | Store at -20°C. Minimize freezing and thawing. |
| Usage Summary: | Peptide ELISA: antibody detection limit dilution 1:128000. Western blot: Approx 70kD band observed in lysates of cell line Jurkat (calculated MW of 69.1kD according to NP_000778.3). Recommended concentration: 1-3 ug/ml. |
| Uses: | IHC - Paraffin (5 µg/ml), Western blot (1 - 3 µg/ml), ELISA (1:128000) (Optimal dilution to be determined by the researcher) |
| Size: | 50 µg |
| Concentration: | 0.5 mg/ml |

Immunohistochemistry Image:



Human Adrenal: Formalin-Fixed, Paraffin-Embedded (FFPE)

Western Blot Image:



DBH antibody (2 ug/ml) staining of Jurkat lysate (35 ug protein in RIPA buffer). Primary incubation was 1 hour. Detected by chemiluminescence.

Requested From:

Japan

Laboratory Reagent For In Vitro Research Use Only

Not for resale without prior written consent from LifeSpan BioSciences, Inc.

Created on 9/24/2014

© 2014 LifeSpan BioSciences