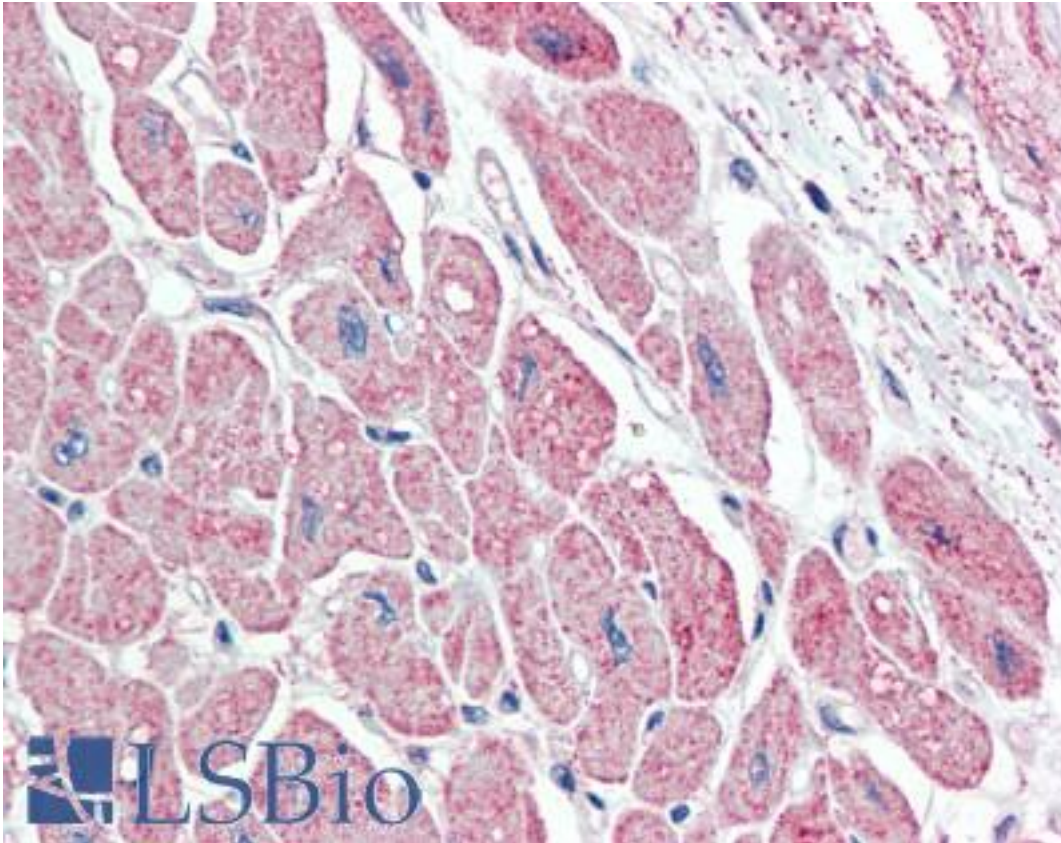


NPPA / ANP Goat anti-Human Polyclonal (C-Terminus) Antibody - LS-B9548 - LSBio	
CatalogID:	LS-B9548
Validation:	This antibody replaces catalog number LS-C154914. It has been validated for use in the following assays: IHC-P.
Target:	natriuretic peptide A (NPPA)
Synonyms:	NPPA Antibody, ANF Antibody, ANP Antibody, Atriopeptin Antibody, ATFB6 Antibody, Atrial natriuretic factor Antibody, CDD-ANF Antibody, Cardionatrin Antibody, Natriuretic peptides A Antibody, Prepronatriodilatin Antibody, Natriuretic peptide A Antibody, PND Antibody
Host	NPPA antibody was produced in Goat
Clonality:	Polyclonal
Immunogen Species:	NPPA / ANP antibody was raised against Human
Antigen Type:	Synthetic peptide
Immunogen:	NPPA / ANP antibody was raised against synthetic peptide RIGAQSGLG CNSFR from the C-terminus of human NPPA (NP_006163.1). Percent identity by BLAST analysis: Human, Chimpanzee, Gorilla, Orangutan, Monkey, Galago, Marmoset, Mouse, Rat, Sheep, Dolphin, Hamster, Panda, Bovine, Dog, Feline, Horse, Rabbit, Porcine, Opossum (100%); Elephant, Guinea pig, Platypus (93%).
Specificity:	Human NPPA. The immunizing peptide represents aa137-150 of the precursor NPPA.
Epitope:	C-Terminus
Reactivity:	Human, Chimpanzee, Gorilla, Orangutan, Monkey, Mouse, Rat, Bovine, Dog, Hamster, Horse, Rabbit, Sheep
Purification:	Immunoaffinity purified
Presentation:	Tris-buffered saline, pH 7.3, 0.5% BSA, 0.02% sodium azide
Recommended Storage:	Store at -20°C. Minimize freezing and thawing.
Usage Summary:	Peptide ELISA: antibody detection limit dilution 1:32000. Western blot: Approx 19kD band observed in Mouse and Rat Heart lysates (calculated MW of 16.4kD according to Human precursor NP_006163.1 and 16.6kD according to Mouse precursor NP_032751.1). Recommended concentration: 0.01-0.03 ug/ml.
Uses:	IHC - Paraffin (5 µg/ml), Western blot (0.01 - 0.03 µg/ml), ELISA (1:32000) (Optimal dilution to be determined by the researcher)
Size:	50 µg
Concentration:	0.5 mg/ml

Immunohistochemistry Image:



Human Heart: Formalin-Fixed, Paraffin-Embedded (FFPE)

Western Blot Image:



NPPA antibody (0.01 ug/ml) staining of Mouse Heart lysate (35 ug protein in RIPA buffer). Primary incubation was 1 hour. Detected by chemiluminescence.

Requested From:

Japan

Laboratory Reagent For In Vitro Research Use Only

Not for resale without prior written consent from LifeSpan BioSciences, Inc.

Created on 9/24/2014

© 2014 LifeSpan BioSciences