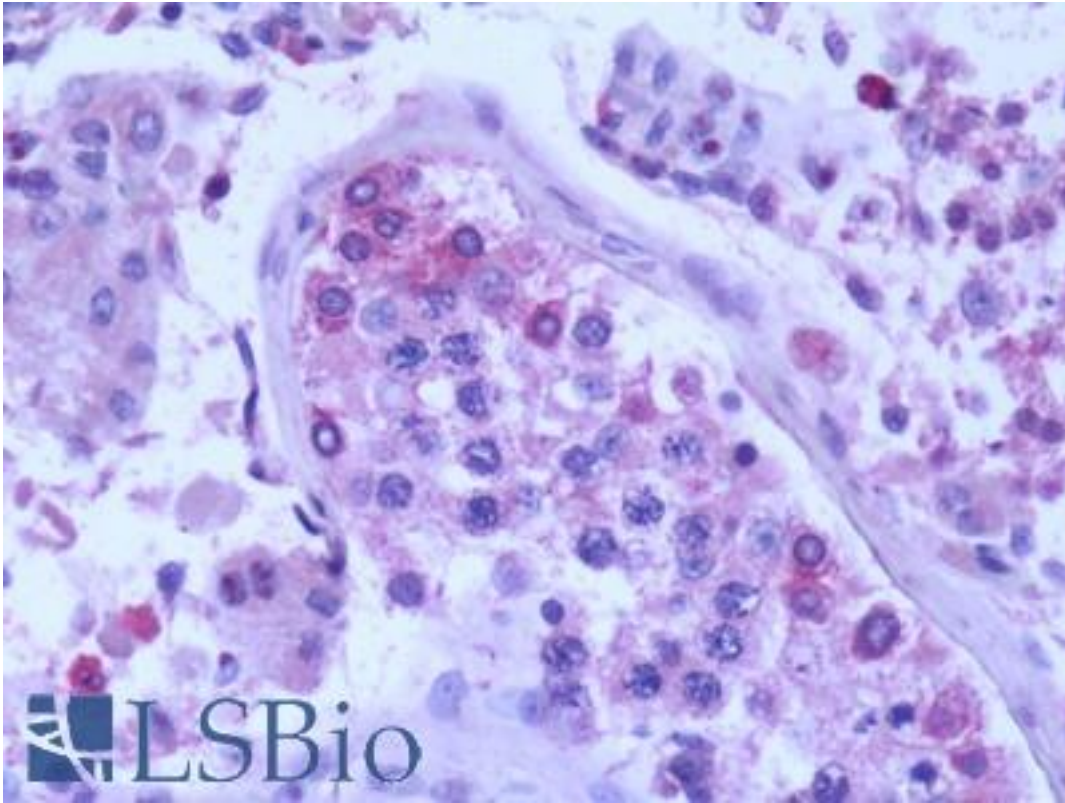


SPAG16 Goat anti-Human Polyclonal (Internal) Antibody - LS-B9543 - LSBio	
CatalogID:	LS-B9543
Validation:	This antibody replaces catalog number LS-C112682. It has been validated for use in the following assays: IHC-P.
Target:	sperm associated antigen 16 (SPAG16)
Synonyms:	SPAG16 Antibody, Pf20 protein homolog Antibody, WDR29 Antibody, PF20 Antibody, Sperm associated antigen 16 Antibody, WD repeat domain 29 Antibody
Host	SPAG16 antibody was produced in Goat
Clonality:	Polyclonal
Immunogen Species:	SPAG16 antibody was raised against Human
Antigen Type:	Synthetic peptide - KLH conjugated
Immunogen:	SPAG16 antibody was raised against synthetic peptide C-KLHYASYEPTIR from an internal region of human SPAG16 (NP_078808.3). Percent identity by BLAST analysis: Human, Gibbon, Monkey, Mouse, Rat, Panda, Horse, Pig, Opossum (100%); Marmoset, Hamster, Bovine (92%).
Specificity:	Human SPAG16. This antibody is expected to recognize isoform 1 (NP_078808.3) only.
Epitope:	Internal
Reactivity:	Human, Gibbon, Mouse, Rat, Horse, Pig
Purification:	Immunoaffinity purified
Presentation:	Tris-buffered saline, pH 7.3, 0.5% BSA, 0.02% sodium azide
Recommended Storage:	Store at -20°C. Minimize freezing and thawing.
Usage Summary:	Peptide ELISA: antibody detection limit dilution 1:32000.
Uses:	IHC - Paraffin (5 µg/ml), ELISA (1:32000) (Optimal dilution to be determined by the researcher)
Size:	50 µg
Concentration:	0.5 mg/ml

Immunohistochemistry Image:



Human, TestisL Formalin-Fixed Paraffin-Embedded (FFPE)

Requested From:

Japan

Laboratory Reagent For In Vitro Research Use Only

Not for resale without prior written consent from LifeSpan BioSciences, Inc.

Created on 9/24/2014

© 2014 LifeSpan BioSciences