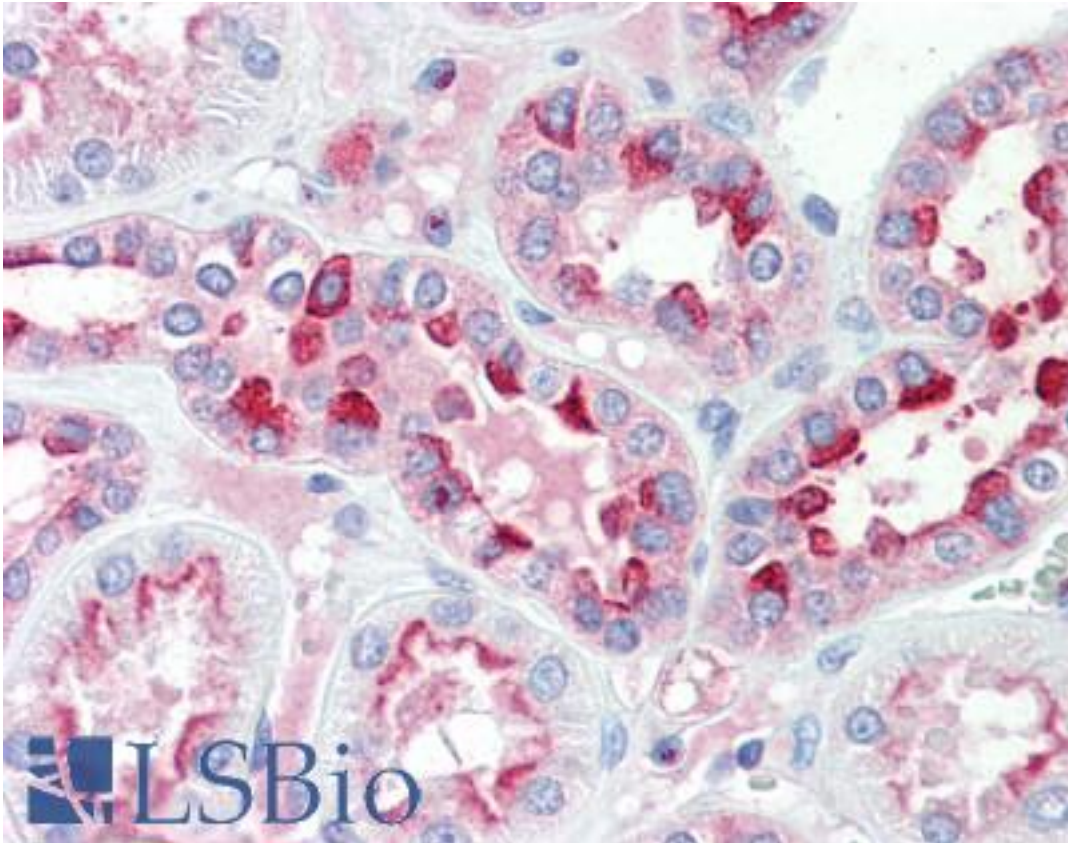


**IDH3G Goat anti-Human Polyclonal (Internal) Antibody - LS-B9541 - LSBio**

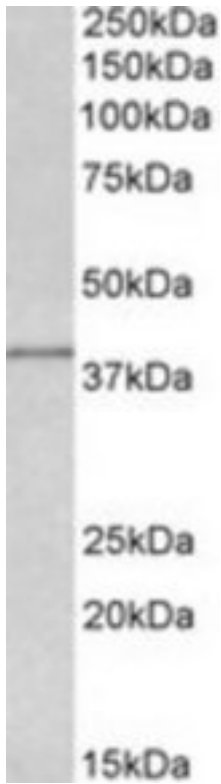
<b>CatalogID:</b>	LS-B9541
<b>Validation:</b>	This antibody replaces catalog number LS-C139803. It has been validated for use in the following assays: IHC-P.
<b>Target:</b>	Isocitrate Dehydrogenase 3 (NAD+) Gamma (IDH3G)
<b>Synonyms:</b>	IDH3G Antibody, H-IDHG Antibody, NAD+-specific ICDH Antibody, IDH-gamma Antibody
<b>Host</b>	IDH3G antibody was produced in Goat
<b>Clonality:</b>	Polyclonal
<b>Immunogen Species:</b>	IDH3G antibody was raised against Human
<b>Antigen Type:</b>	Synthetic peptide - KLH conjugated
<b>Immunogen:</b>	IDH3G antibody was raised against synthetic peptide C-DHLKLHSYATSIRK from an internal region of human IDH3G (NP_004126.1; NP_777358.1). Percent identity by BLAST analysis: Human, Gorilla, Gibbon, Monkey, Marmoset, Mouse, Rat, Hamster, Panda, Dog, Bovine, Horse, Pig, Armadillo (100%); Elephant, Opossum, Xenopus (93%); Rabbit, Platypus (86%).
<b>Specificity:</b>	Human IDH3G. This antibody is expected to recognize both reported isoforms (NP_004126.1; NP_777358.1).
<b>Epitope:</b>	Internal
<b>Reactivity:</b>	Human, Gorilla, Gibbon, Monkey, Mouse, Rat, Bovine, Dog, Hamster, Horse, Pig
<b>Purification:</b>	Immunoaffinity purified
<b>Presentation:</b>	Tris-buffered saline, pH 7.3, 0.5% BSA, 0.02% sodium azide
<b>Recommended Storage:</b>	Store at -20°C. Minimize freezing and thawing.
<b>Usage Summary:</b>	Peptide ELISA: antibody detection limit dilution 1:16000. Western blot: Approx 38kD band observed in lysates of cell line MCF7 and of Human, Mouse and Rat Heart (calculated MW of 41.5kD according to NP_777358.1). Recommended concentration: 0.5-2 ug/ml.
<b>Uses:</b>	IHC - Paraffin (5 µg/ml), Western blot (0.5 - 2 µg/ml), ELISA (1:16000) (Optimal dilution to be determined by the researcher)
<b>Size:</b>	50 µg
<b>Concentration:</b>	0.5 mg/ml

**Immunohistochemistry Image:**



Human Kidney: Formalin-Fixed, Paraffin-Embedded (FFPE)

**Western Blot Image:**



IDH3G antibody (0.5 ug/ml) staining of MCF7 lysate (35 ug protein/ml in RIPA buffer).  
Primary incubation was 1 hour. Detected by chemiluminescence.

**Requested From:**

Japan

Laboratory Reagent For In Vitro Research Use Only

Not for resale without prior written consent from LifeSpan BioSciences, Inc.

Created on 9/24/2014

© 2014 LifeSpan BioSciences