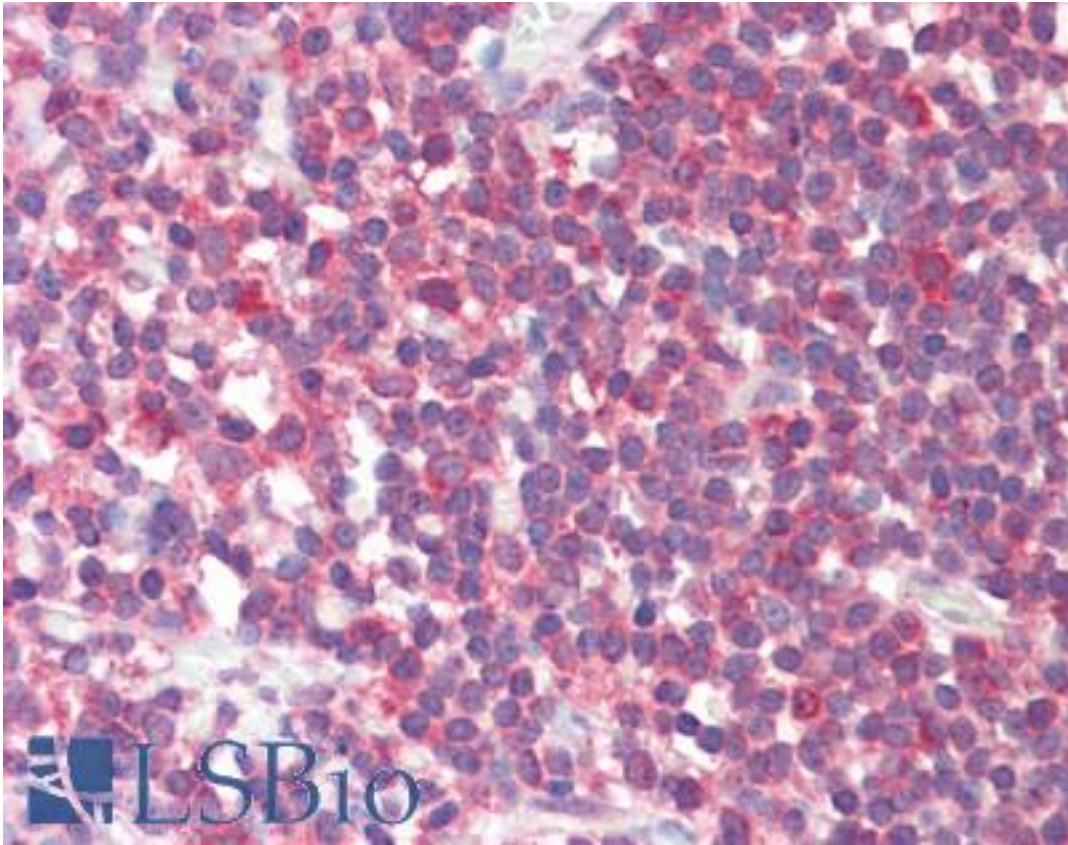


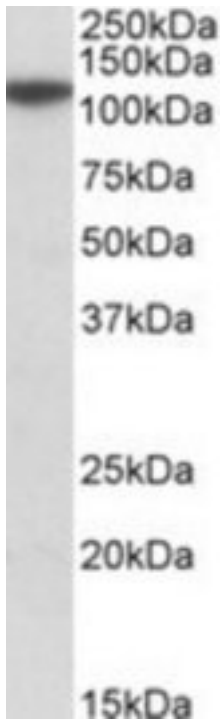
FTHFSDC1 / MTHFD1L Goat anti-Human Polyclonal (Internal) Antibody - LS-B9540 - LSBio	
CatalogID:	LS-B9540
Validation:	This antibody replaces catalog number LS-C139820. It has been validated for use in the following assays: IHC-P.
Target:	methylenetetrahydrofolate dehydrogenase (NADP+ dependent) 1-like (MTHFD1L)
Synonyms:	MTHFD1L Antibody, 10-formyl-THF synthetase Antibody, DJ292B18.2 Antibody, FTHFSDC1 Antibody, MTC1THFS Antibody, RP1-292B18.2 Antibody, DKFZP586G1517 Antibody
Host	MTHFD1L antibody was produced in Goat
Clonality:	Polyclonal
Immunogen Species:	FTHFSDC1 / MTHFD1L antibody was raised against Human
Antigen Type:	Synthetic peptide
Immunogen:	FTHFSDC1 / MTHFD1L antibody was raised against synthetic peptide C-DTNRFLRKITIGQ from an internal region of human MTHFD1L (NP_056255.2). Percent identity by BLAST analysis: Human, Gorilla, Orangutan, Gibbon, Monkey, Marmoset, Mouse, Rat, Hamster, Elephant, Panda, Dog, Bat, Bovine, Horse, Rabbit, Pig, Opossum, Lizard, Xenopus, Stickleback, Pufferfish, Zebrafish, Seq squirt, Salpingoeca (100%).
Specificity:	Human MTHFD1L.
Epitope:	Internal
Reactivity:	Human, Gorilla, Orangutan, Gibbon, Monkey, Mouse, Rat, Bat, Bovine, Dog, Hamster, Horse, Pig, Rabbit, Xenopus, Zebrafish
Purification:	Immunoaffinity purified
Presentation:	Tris-buffered saline, pH 7.3, 0.5% BSA, 0.02% sodium azide
Recommended Storage:	Store at -20°C. Minimize freezing and thawing.
Usage Summary:	Peptide ELISA: antibody detection limit dilution 1:32000. Western blot: Approx 110kD band observed in Human Brain (Cerebellum) (calculated MW of 106kD according to NP_056255.2). Recommended concentration: 0.1-0.3 ug/ml.
Uses:	IHC - Paraffin (5 µg/ml), Western blot (0.1 - 0.3 µg/ml), ELISA (1:32000) (Optimal dilution to be determined by the researcher)
Size:	50 µg
Concentration:	0.5 mg/ml

Immunohistochemistry Image:



Human Tonsil: Formalin-Fixed, Paraffin-Embedded (FFPE)

Western Blot Image:



MTHFD1L antibody (0.1 ug/ml) staining of Human Cerebellum lysate (35 ug protein/ml in RIPA buffer). Primary incubation was 1 hour. Detected by chemiluminescence.

Requested From:

Japan

Laboratory Reagent For In Vitro Research Use Only

Not for resale without prior written consent from LifeSpan BioSciences, Inc.

Created on 9/24/2014

© 2014 LifeSpan BioSciences