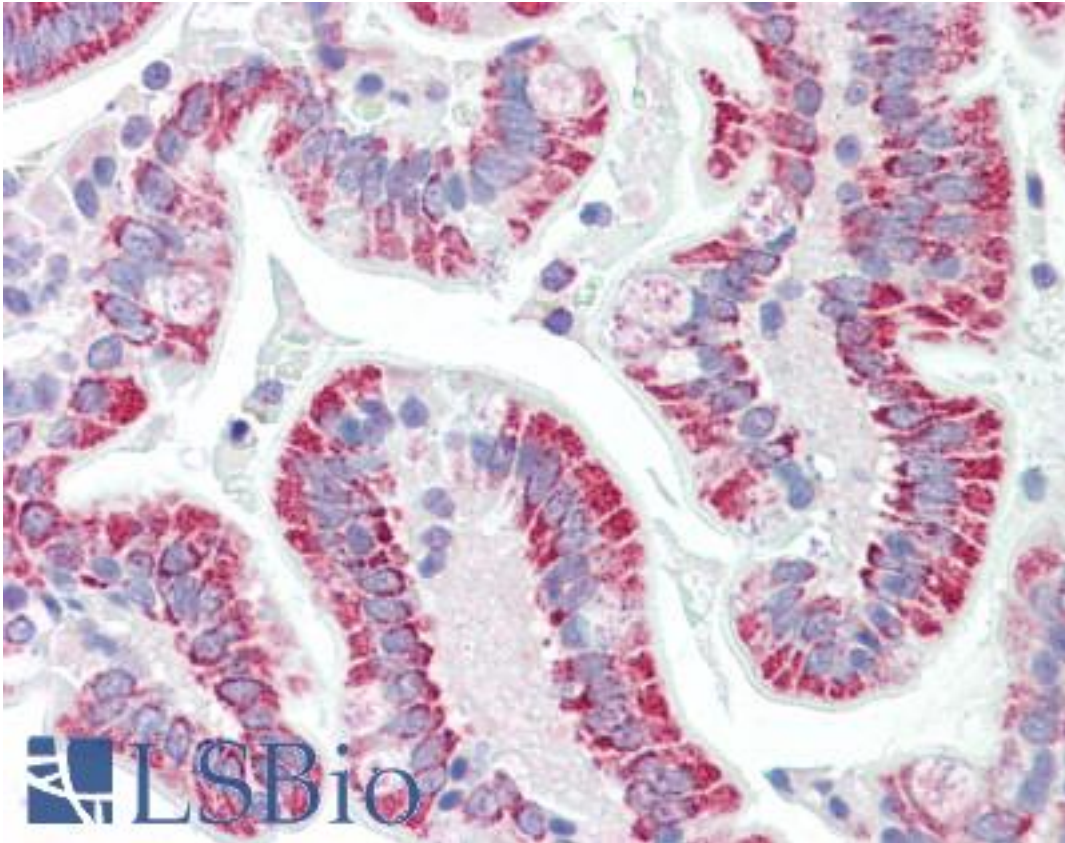


DBP5 / SON Goat anti-Human Polyclonal (N-Terminus) Antibody - LS-B9539 - LSBio	
CatalogID:	LS-B9539
Validation:	This antibody replaces catalog number LS-C154842. It has been validated for use in the following assays: IHC-P.
Target:	SON DNA binding protein
Synonyms:	SON Antibody, C21orf50 Antibody, DBP5 Antibody, DBP-5 Antibody, KIAA1019 Antibody, NREBP Antibody, Protein SON Antibody, Protein DBP-5 Antibody, SON DNA binding protein Antibody, NRE-binding protein Antibody, SON3 Antibody, BASS1 Antibody
Host	SON antibody was produced in Goat
Clonality:	Polyclonal
Immunogen Species:	DBP5 / SON antibody was raised against Human
Antigen Type:	Synthetic peptide
Immunogen:	DBP5 / SON antibody was raised against synthetic peptide KSRCVSVQTDPTD from the N-terminus of human SON (NP_115571.1; NP_620305.1). Percent identity by BLAST analysis: Human, Chimpanzee, Gorilla, Orangutan, Gibbon, Baboon, Monkey, Galago, Marmoset, Mouse, Rat, Dog, Bat, Bovine, Elephant, Panda, Rabbit, Horse, Porcine, Opossum, Guinea pig (100%); Armadillo (92%); Shrew (85%).
Specificity:	Human SON. This antibody is expected to recognize reported isoforms B (NP_115571.1) and F (NP_620305.1).
Epitope:	N-Terminus
Reactivity:	Human, Chimpanzee, Gorilla, Orangutan, Gibbon, Monkey, Mouse, Rat, Bat, Bovine, Dog, Guinea pig, Horse, Rabbit
Purification:	Immunoaffinity purified
Presentation:	Tris-buffered saline, pH 7.3, 0.5% BSA, 0.02% sodium azide
Recommended Storage:	Store at -20°C. Minimize freezing and thawing.
Usage Summary:	Peptide ELISA: antibody detection limit dilution 1:32000. Western blot: Preliminary experiments gave an approx 35kD band in Human, Mouse and Rat Heart lysates after 0.3 ug/ml antibody staining. Please note that currently we cannot find an explanation in the literature for the band we observe given the calculated size of 250kD according to NP_115571.1. The 35kD band was successfully blocked by incubation with the immunizing peptide.
Uses:	IHC - Paraffin (5 µg/ml), ELISA (1:32000) (Optimal dilution to be determined by the researcher)
Size:	50 µg
Concentration:	0.5 mg/ml

Immunohistochemistry Image:



Human Small Intestine: Formalin-Fixed, Paraffin-Embedded (FFPE)

Requested From:

Japan

Laboratory Reagent For In Vitro Research Use Only

Not for resale without prior written consent from LifeSpan BioSciences, Inc.

Created on 9/24/2014

© 2014 LifeSpan BioSciences