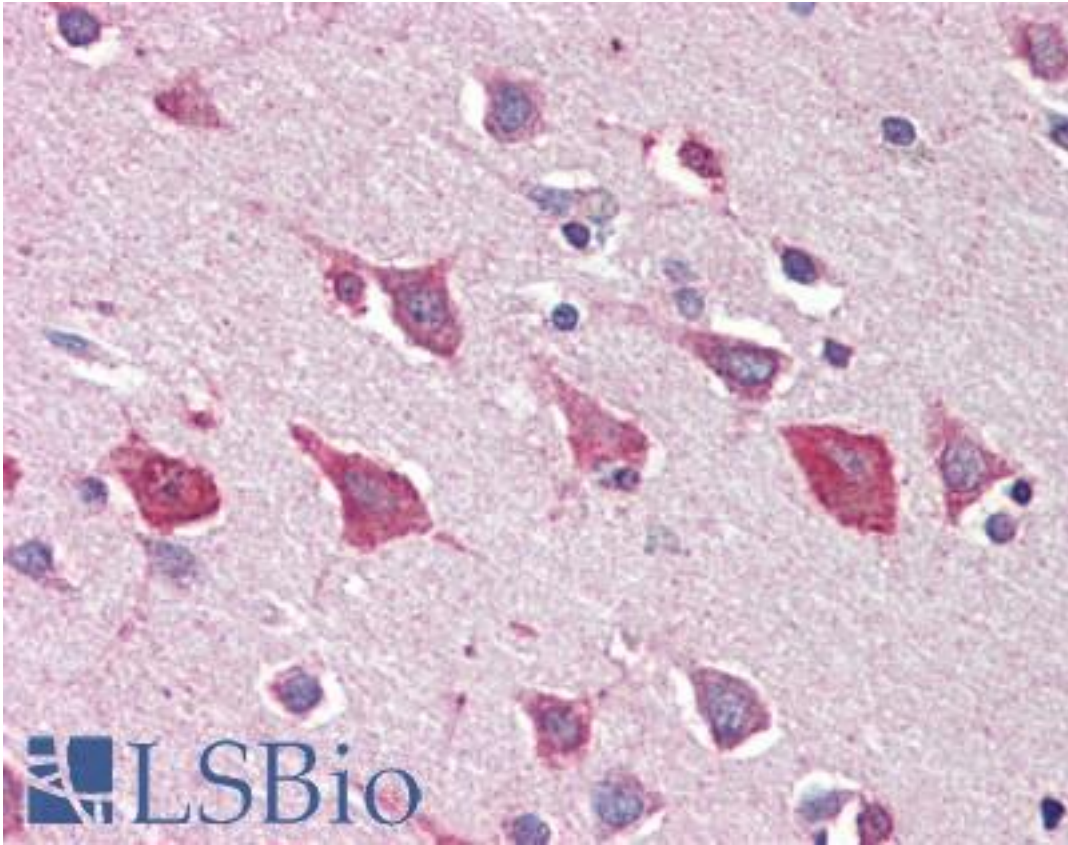


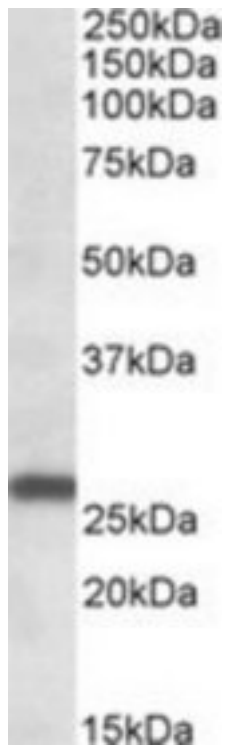
MOBKL3 / MOB1 Goat anti-Human Polyclonal (Internal) Antibody - LS-B9537 - LSBio	
CatalogID:	LS-B9537
Validation:	This antibody replaces catalog number LS-C139760. It has been validated for use in the following assays: IHC-P.
Target:	MOB family member 4, phocein (MOB4)
Synonyms:	MOB4 Antibody, 2C4D Antibody, Class II mMOB1 Antibody, DKFZP564M112 Antibody, CGI-95 Antibody, MOB1 Antibody, MOB-like protein phocein Antibody, Mob1 homolog 3 Antibody, PREI3 Antibody, Preimplantation protein 3 Antibody, MOB3 Antibody, PHOCN Antibody, MOB family member 4, phocein Antibody, MOBKL3 Antibody, Phocein, Mob-like protein Antibody
Host	MOB4 antibody was produced in Goat
Clonality:	Polyclonal
Immunogen Species:	MOBKL3 / MOB1 antibody was raised against Human
Antigen Type:	Synthetic peptide
Immunogen:	MOBKL3 / MOB1 antibody was raised against synthetic peptide C-NSNKYFPSRVSIKES from an internal region of human MOBKL3 (NP_056202.2; NP_955776.1; NP_001094289.1). Percent identity by BLAST analysis: Human, Orangutan, Gibbon, Monkey, Marmoset, Mouse, Rat, Hamster, Elephant, Panda, Bovine, Dog, Horse, Opossum, Turkey, Chicken, Xenopus, Trout, Stickleback, Pufferfish, Zebrafish, Drosophila, Mosquito, Sea anemone, Nematode, Beetle, Tick (100%); Catfish, Seq squirt, Eye worm, Ant, Water flea (93%); Blood fluke (80%).
Specificity:	Human MOBKL3. This antibody is expected to recognize all three reported isoforms (NP_056202.2; NP_955776.1; NP_001094289.1).
Epitope:	Internal
Reactivity:	Human, Orangutan, Gibbon, Monkey, Mouse, Rat, Bovine, Dog, Hamster, Horse, Chicken, Xenopus, Zebrafish, Drosophila, Insect
Purification:	Immunoaffinity purified
Presentation:	Tris-buffered saline, pH 7.3, 0.5% BSA, 0.02% sodium azide
Recommended Storage:	Store at -20°C. Minimize freezing and thawing.
Usage Summary:	Peptide ELISA: antibody detection limit dilution 1:4000. Western blot: Approx 26kD band observed in Human Brain (Frontal Cortex) and in Mouse and Rat Brain lysates (calculated MW of 26.0kD according to NP_056202.2). Recommended concentration: 0.3-1 ug/ml.
Uses:	IHC - Paraffin (5 µg/ml), Western blot (0.3 - 1 µg/ml), ELISA (1:4000) (Optimal dilution to be determined by the researcher)
Size:	50 µg
Concentration:	0.5 mg/ml

Immunohistochemistry Image:



Human Brain, Cortex: Formalin-Fixed, Paraffin-Embedded (FFPE)

Western Blot Image:



MOBKL3 antibody (0.3 ug/ml) staining of Human Frontal Cortex lysate (35 ug protein/ml in RIPA buffer). Primary incubation was 1 hour. Detected by chemiluminescence.

Requested From:

Japan

Laboratory Reagent For In Vitro Research Use Only

Not for resale without prior written consent from LifeSpan BioSciences, Inc.

Created on 9/24/2014

© 2014 LifeSpan BioSciences