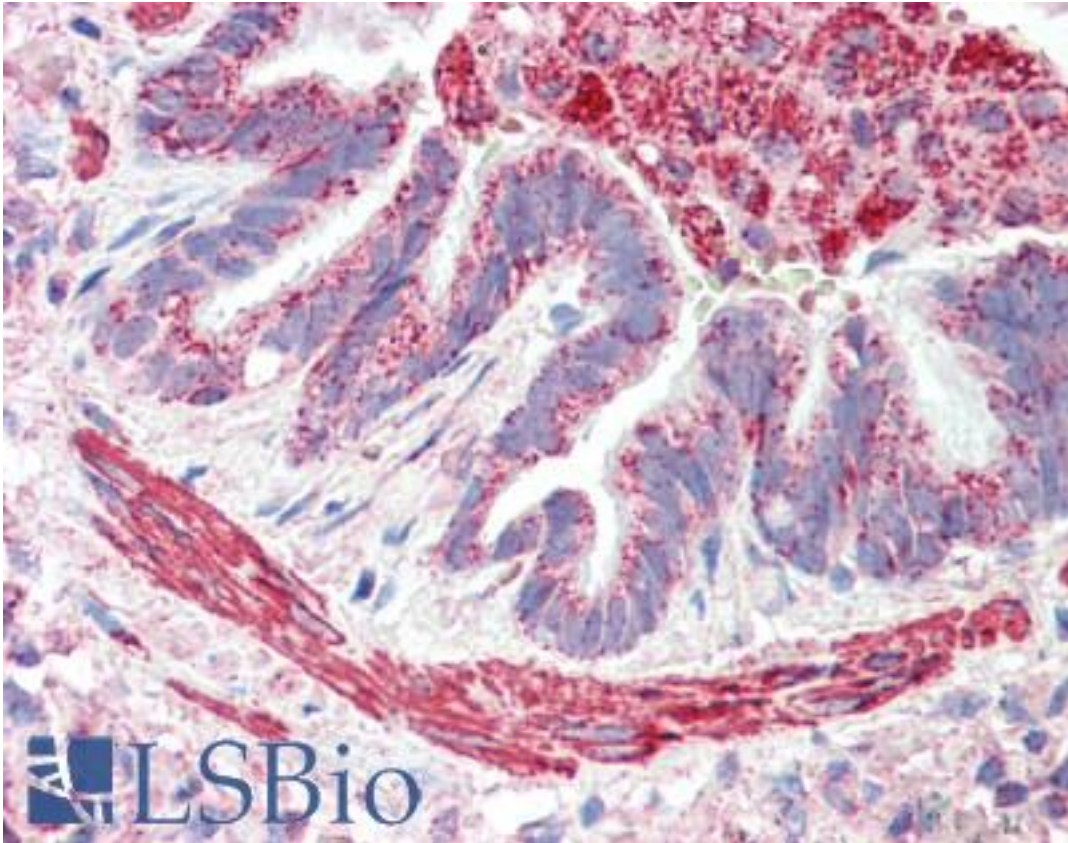


MOB2 Goat anti-Human Polyclonal (Internal) Antibody - LS-B9536 - LSBio

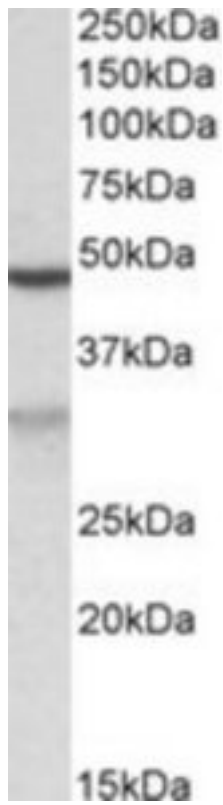
<b>CatalogID:</b>	LS-B9536
<b>Validation:</b>	This antibody replaces catalog number LS-C139759. It has been validated for use in the following assays: IHC-P.
<b>Target:</b>	MOB kinase activator 2 (MOB2)
<b>Synonyms:</b>	MOB2 Antibody, HCCA2 Antibody, MOB kinase activator 2 Antibody, MOB2 Mps One Binder homolog Antibody, Mob2 homolog Antibody
<b>Host</b>	MOB2 antibody was produced in Goat
<b>Clonality:</b>	Polyclonal
<b>Immunogen Species:</b>	MOB2 antibody was raised against Human
<b>Antigen Type:</b>	Synthetic peptide
<b>Immunogen:</b>	MOB2 antibody was raised against synthetic peptide DERGKKVKCTAPQ from an internal region of human MOB2 / HCCA2 (NP_001165694.1; NP_443731.2). Percent identity by BLAST analysis: Human, Gorilla, Gibbon, Monkey, Marmoset, Mouse, Rat, Hamster, Panda, Bovine, Dog, Horse, Xenopus (100%); Chicken, Zebrafish (92%); Smelt, Seq squirt (85%).
<b>Specificity:</b>	Human MOB2 / HCCA2. This antibody is expected to recognize both reported isoforms (NP_001165694.1; NP_443731.2) only.
<b>Epitope:</b>	Internal
<b>Reactivity:</b>	Human, Gorilla, Gibbon, Monkey, Mouse, Rat, Bovine, Dog, Hamster, Horse, Xenopus
<b>Purification:</b>	Immunoaffinity purified
<b>Presentation:</b>	Tris-buffered saline, pH 7.3, 0.5% BSA, 0.02% sodium azide
<b>Recommended Storage:</b>	Store at -20°C. Minimize freezing and thawing.
<b>Usage Summary:</b>	Peptide ELISA: antibody detection limit dilution 1:128000. Western blot: Approx 30kD band observed in lysates of cell line Jurkat (calculated MW of 30.2kD according to NP_001165694.1). Recommended concentration: 0.02-0.06 ug/ml. An additional band of unknown identity was also consistently observed at 48kD. This band was successfully blocked by incubation with the immunizing peptide.
<b>Uses:</b>	IHC - Paraffin (5 µg/ml), Western blot (0.02 - 0.06 µg/ml), ELISA (1:128000) (Optimal dilution to be determined by the researcher)
<b>Size:</b>	50 µg
<b>Concentration:</b>	0.5 mg/ml

**Immunohistochemistry Image:**



Human Lung, Airway: Formalin-Fixed, Paraffin-Embedded (FFPE)

**Western Blot Image:**



MOB2 antibody (0.02 ug/ml) staining of Jurkat lysate (35 ug protein/ml in RIPA buffer). Primary incubation was 1 hour. Detected by chemiluminescence.

**Requested From:**

Japan

Laboratory Reagent For In Vitro Research Use Only

Not for resale without prior written consent from LifeSpan BioSciences, Inc.

Created on 9/24/2014

© 2014 LifeSpan BioSciences