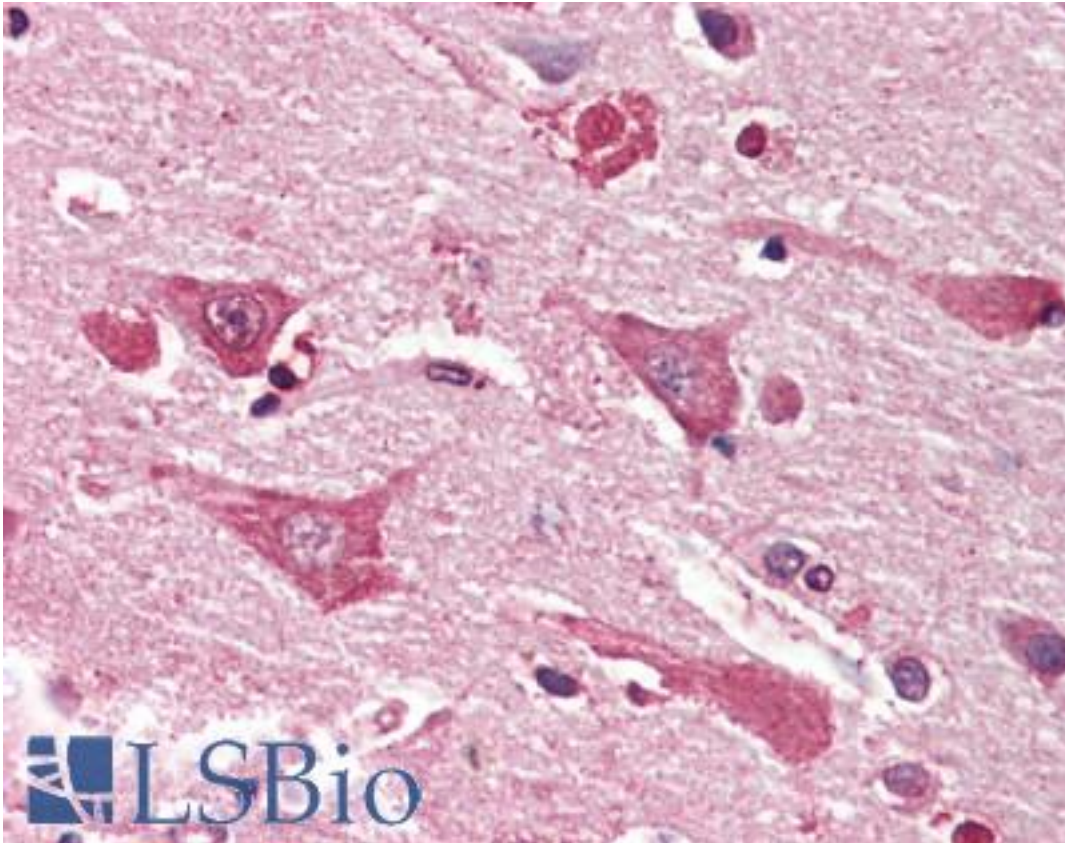


MYO1B / Myosin IB Goat anti-Human Polyclonal (Internal) Antibody - LS-B9534 - LSBio

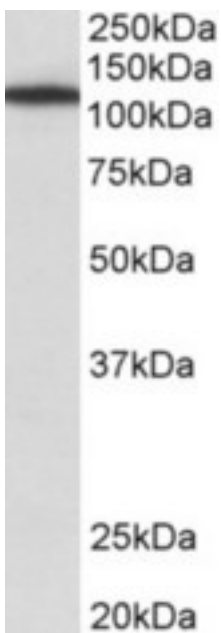
CatalogID:	LS-B9534
Validation:	This antibody replaces catalog number LS-C154807. It has been validated for use in the following assays: IHC-P.
Target:	Myosin IB (MYO1B)
Synonyms:	MYO1B Antibody, MMI-alpha Antibody, MMIa Antibody, MYO1B variant protein Antibody, Myosin I alpha Antibody, Myosin IB Antibody, Myosin-Ib Antibody, Myr1 Antibody, Unconventional myosin-Ib Antibody, MYH-1c Antibody, Myosin-I alpha Antibody
Host	MYO1B antibody was produced in Goat
Clonality:	Polyclonal
Immunogen Species:	MYO1B / Myosin IB antibody was raised against Human
Antigen Type:	Synthetic peptide
Immunogen:	MYO1B / Myosin IB antibody was raised against synthetic peptide C-RTVEAKQEKVSTT from an internal region of human MYO1B (NP_001123630.1; NP_036355.2). Percent identity by BLAST analysis: Human, Chimpanzee, Gorilla, Orangutan, Gibbon, Monkey, Galago, Marmoset, Mouse, Rat, Bovine, Bat, Dog, Hamster, Elephant, Panda, Horse, Rabbit, Opossum, Guinea pig, Zebra finch, Chicken, Lizard, Stickleback (100%); Platypus, Xenopus, Medaka, Pufferfish, Zebrafish (92%).
Specificity:	Human MYO1B. This antibody is expected to recognize both reported isoforms (NP_001123630.1; NP_036355.2). Reported variants represent identical protein: NP_001123630.1, NP_001155291.1.
Epitope:	Internal
Reactivity:	Human, Chimpanzee, Gorilla, Orangutan, Gibbon, Monkey, Mouse, Rat, Bat, Bovine, Dog, Guinea pig, Hamster, Horse, Rabbit, Chicken
Purification:	Immunoaffinity purified
Presentation:	Tris-buffered saline, pH 7.3, 0.5% BSA, 0.02% sodium azide
Recommended Storage:	Store at -20°C. Minimize freezing and thawing.
Usage Summary:	Peptide ELISA: antibody detection limit dilution 1:16000. Western blot: Approx 120kD band observed in lysates of cell line NIH3T3 (calculated MW of 125kD according to Human NP_036355.2 and 128kD according to Mouse NP_034993.2). Recommended concentration: 1-3 ug/ml.
Uses:	IHC - Paraffin (5 µg/ml), Western blot (1 - 3 µg/ml), ELISA (1:16000) (Optimal dilution to be determined by the researcher)
Size:	50 µg
Concentration:	0.5 mg/ml

Immunohistochemistry Image:



Human Brain, Cortex: Formalin-Fixed, Paraffin-Embedded (FFPE)

Western Blot Image:



MYO1B antibody (1 ug/ml) staining of NIH3T3 lysate (35 ug protein in RIPA buffer). Primary incubation was 1 hour. Detected by chemiluminescence.

Requested From:

Japan

Laboratory Reagent For In Vitro Research Use Only

Not for resale without prior written consent from LifeSpan BioSciences, Inc.

Created on 9/24/2014

© 2014 LifeSpan BioSciences