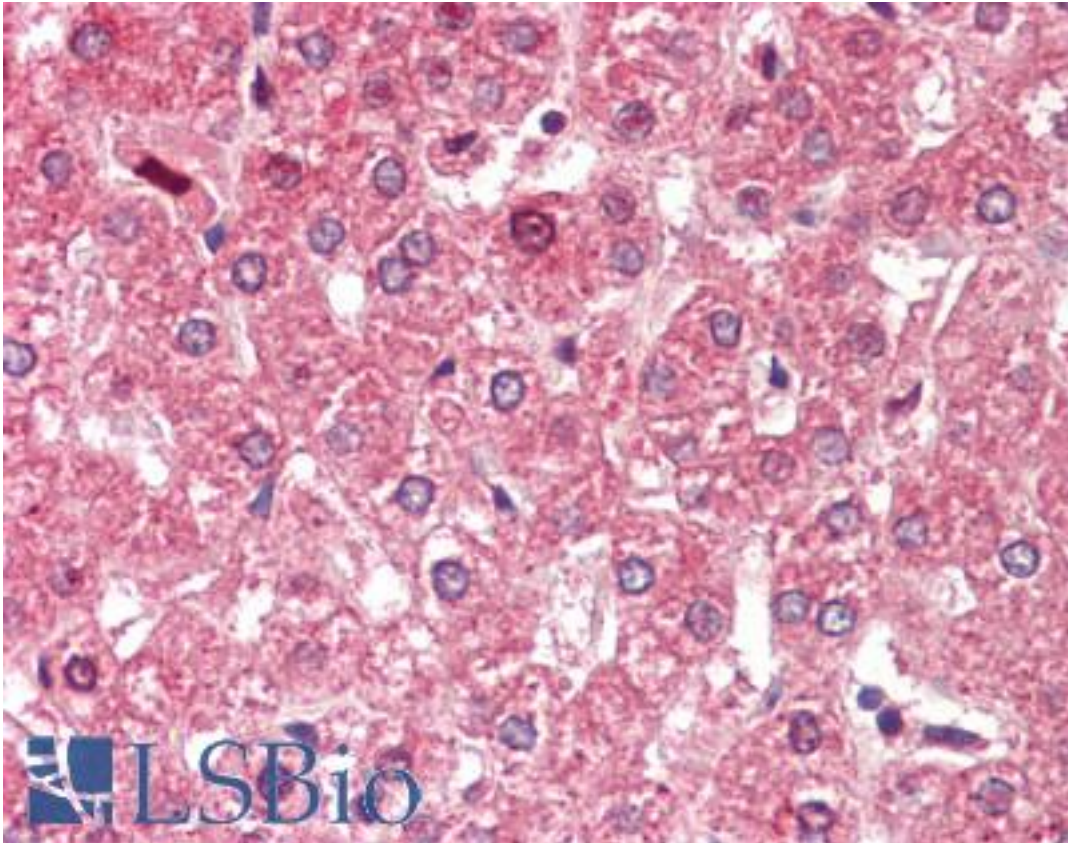


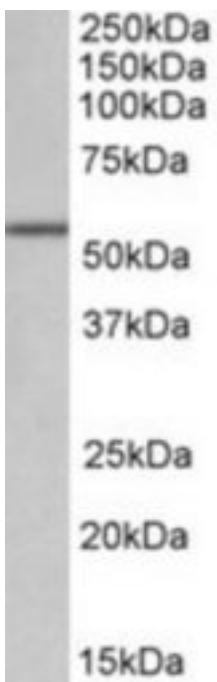
ALDH6A1 Goat anti-Human Polyclonal (Internal) Antibody - LS-B9531 - LSBio	
CatalogID:	LS-B9531
Validation:	This antibody replaces catalog number LS-C139666. It has been validated for use in the following assays: IHC-P.
Target:	aldehyde dehydrogenase 6 family, member A1 (ALDH6A1)
Synonyms:	ALDH6A1 Antibody, MMSDH Antibody, MMSADHA Antibody
Host	ALDH6A1 antibody was produced in Goat
Clonality:	Polyclonal
Immunogen Species:	ALDH6A1 antibody was raised against Human
Antigen Type:	Synthetic peptide
Immunogen:	ALDH6A1 antibody was raised against synthetic peptide C-SRSSFRGDTN from an internal region of human ALDH6A1 (NP_005580.1). Percent identity by BLAST analysis: Human, Gorilla, Orangutan, Gibbon, Monkey, Marmoset, Mouse, Rat, Hamster, Panda, Dog, Bat, Horse, Rabbit, Pig, Opossum, Platypus (100%); Elephant, Bovine, Lizard, Xenopus, Salmon, Stickleback, Pufferfish, Zebrafish, Water flea, Trichoplax (90%); Seq squirt (80%).
Specificity:	Human ALDH6A1.
Epitope:	Internal
Reactivity:	Human, Gorilla, Orangutan, Gibbon, Monkey, Mouse, Rat, Bat, Dog, Hamster, Horse, Pig, Rabbit
Purification:	Immunoaffinity purified
Presentation:	Tris-buffered saline, pH 7.3, 0.5% BSA, 0.02% sodium azide
Recommended Storage:	Store at -20°C. Minimize freezing and thawing.
Usage Summary:	Peptide ELISA: antibody detection limit dilution 1:32000. Western blot: Approx 55kD band observed in Human, Mouse and Rat Kidney lysates (calculated MW of 57.8kD according to NP_005580.1). Recommended concentration: 0.1-0.3 ug/ml.
Uses:	IHC - Paraffin (5 µg/ml), Western blot (0.1 - 0.3 µg/ml), ELISA (1:32000) (Optimal dilution to be determined by the researcher)
Size:	50 µg
Concentration:	0.5 mg/ml

Immunohistochemistry Image:



Human Liver: Formalin-Fixed, Paraffin-Embedded (FFPE)

Western Blot Image:



ALDH6A1 antibody (0.1 ug/ml) staining of Mouse Kidney lysate (35 ug protein/ml in RIPA buffer). Primary incubation was 1 hour. Detected by chemiluminescence.

Requested From:	Japan
Laboratory Reagent For In Vitro Research Use Only	
Not for resale without prior written consent from LifeSpan BioSciences, Inc.	
Created on 9/24/2014	
© 2014 LifeSpan BioSciences	