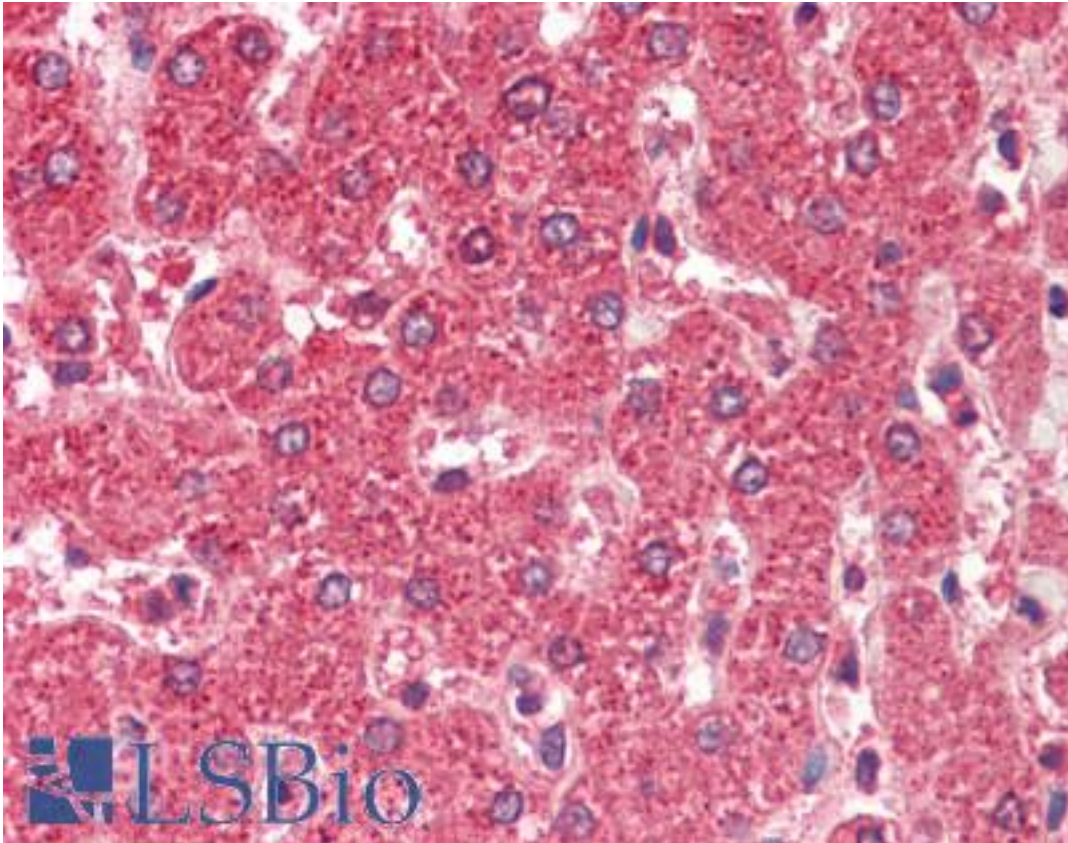


ALDH5A1 Goat anti-Human Polyclonal (aa 485-496) Antibody - LS-B9530 - LSBio

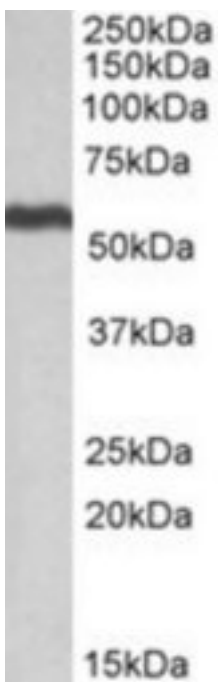
CatalogID:	LS-B9530
Validation:	This antibody replaces catalog number LS-C139664. It has been validated for use in the following assays: IHC-P.
Target:	aldehyde dehydrogenase 5 family, member A1 (ALDH5A1)
Synonyms:	ALDH5A1 Antibody, SSADH Antibody, SSDH Antibody
Host	ALDH5A1 antibody was produced in Goat
Clonality:	Polyclonal
Immunogen Species:	ALDH5A1 antibody was raised against Human
Antigen Type:	Synthetic peptide
Immunogen:	ALDH5A1 antibody was raised against synthetic peptide C-SQDPAQIWRVAE from an internal region of human ALDH5A1 (NP_733936.1; NP_001071.1). Percent identity by BLAST analysis: Human, Chimpanzee, Gorilla, Orangutan, Gibbon, Monkey, Marmoset, Mouse, Rat, Hamster, Elephant, Panda, Bovine, Dog, Bat, Horse, Rabbit, Opossum, Chicken, Xenopus (100%); Pig, Lizard (92%); Salmon, Zebrafish (83%).
Specificity:	Human ALDH5A1. This antibody is expected to recognize both reported isoforms (NP_733936.1; NP_001071.1). Amino acid numbering in name calculated from NP_733936.1.
Epitope:	aa 485-496
Reactivity:	Human, Chimpanzee, Gorilla, Orangutan, Gibbon, Monkey, Mouse, Rat, Bat, Bovine, Dog, Hamster, Horse, Rabbit, Chicken, Xenopus
Purification:	Immunoaffinity purified
Presentation:	Tris-buffered saline, pH 7.3, 0.5% BSA, 0.02% sodium azide
Recommended Storage:	Store at -20°C. Minimize freezing and thawing.
Usage Summary:	Peptide ELISA: antibody detection limit dilution 1:32000. Western blot: Approx 55kD band observed in Human Liver lysates (calculated MW of 58.7kD according to NP_733936.1). Recommended concentration: 0.3-1 ug/ml. Please note that both this product and LS-B11178 detects a 50kD in Mouse and Rat Liver lysates (calculated MW of 56.0kD according to Mouse NP_766120.1).
Uses:	IHC - Paraffin (5 µg/ml), Western blot (0.3 - 1 µg/ml), ELISA (1:32000) (Optimal dilution to be determined by the researcher)
Size:	50 µg
Concentration:	0.5 mg/ml

Immunohistochemistry Image:



Human Liver: Formalin-Fixed, Paraffin-Embedded (FFPE)

Western Blot Image:



ALDH5A1 antibody (0.5 ug/ml) staining of Human Liver lysate (35 ug protein/ml in RIPA buffer). Primary incubation was 1 hour. Detected by chemiluminescence.

Requested From:	Japan
Laboratory Reagent For In Vitro Research Use Only	
Not for resale without prior written consent from LifeSpan BioSciences, Inc.	
Created on 9/24/2014	
© 2014 LifeSpan BioSciences	