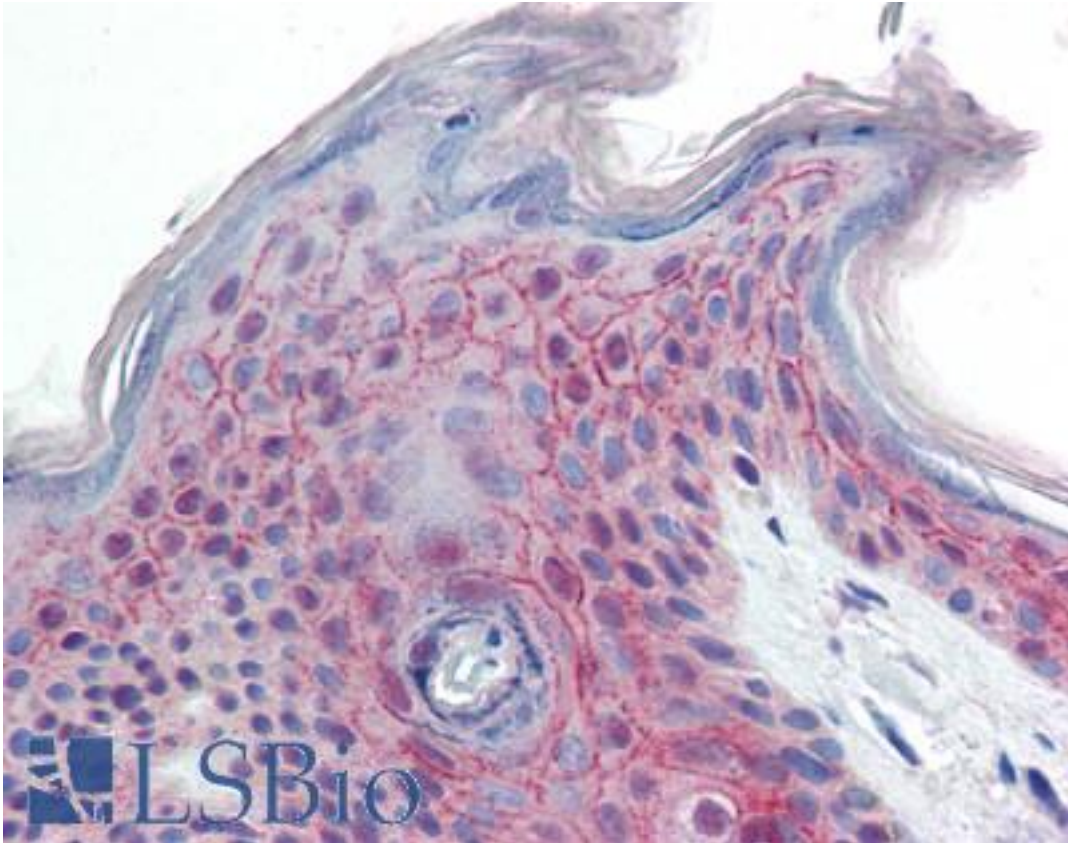


PPPDE1 Goat anti-Human Polyclonal (Internal) Antibody - LS-B9528 - LSBio	
CatalogID:	LS-B9528
Validation:	This antibody replaces catalog number LS-C139702. It has been validated for use in the following assays: IHC-P.
Target:	desumoylating isopeptidase 2 (DESI2)
Synonyms:	DESI2 Antibody, C1orf121 Antibody, CGI-146 Antibody, DESI Antibody, DeSI-2 Antibody, Desumoylating isopeptidase 1 Antibody, Desumoylating isopeptidase 2 Antibody, FAM152A Antibody, PNAS-4 Antibody, Protein FAM152A Antibody, PPPDE1 Antibody
Host	DESI2 antibody was produced in Goat
Clonality:	Polyclonal
Immunogen Species:	PPPDE1 antibody was raised against Human
Antigen Type:	Synthetic peptide
Immunogen:	PPPDE1 antibody was raised against synthetic peptide C-ELGKEYKGNAYH from an internal region of human PPPDE1 / C1orf121 (NP_057160.2). Percent identity by BLAST analysis: Human, Gorilla, Orangutan, Gibbon, Monkey, Marmoset, Mouse, Rat, Hamster, Elephant, Panda, Bovine, Dog, Bat, Horse, Rabbit, Pig, Chicken, Platypus, Xenopus (100%); Opossum, Turkey, Stickleback, Pufferfish, Zebrafish (92%); Seq squirt (83%).
Specificity:	Human PPPDE1 / C1orf121.
Epitope:	Internal
Reactivity:	Human, Gorilla, Orangutan, Gibbon, Monkey, Mouse, Rat, Bat, Bovine, Dog, Hamster, Horse, Pig, Rabbit, Chicken, Xenopus
Purification:	Immunoaffinity purified
Presentation:	Tris-buffered saline, pH 7.3, 0.5% BSA, 0.02% sodium azide
Recommended Storage:	Store at -20°C. Minimize freezing and thawing.
Usage Summary:	Peptide ELISA: antibody detection limit dilution 1:32000. Western blot: In transfected HEK293 transiently expressing full-length Human PPPDE1(myc and DYKDDDDK tagged), a band of approx. 30kD was observed. No bands were observed in mock-transfected HEK293 and the same band was observed using anti-myc tag antibody. Recommended concentration, 0.5-1 ug/ml.
Uses:	IHC - Paraffin (10 µg/ml), Western blot (0.5 - 1 µg/ml), ELISA (1:32000) (Optimal dilution to be determined by the researcher)
Size:	50 µg
Concentration:	0.5 mg/ml

Immunohistochemistry Image:



Human Skin: Formalin-Fixed, Paraffin-Embedded (FFPE)

Requested From:

Japan

Laboratory Reagent For In Vitro Research Use Only

Not for resale without prior written consent from LifeSpan BioSciences, Inc.

Created on 9/24/2014

© 2014 LifeSpan BioSciences