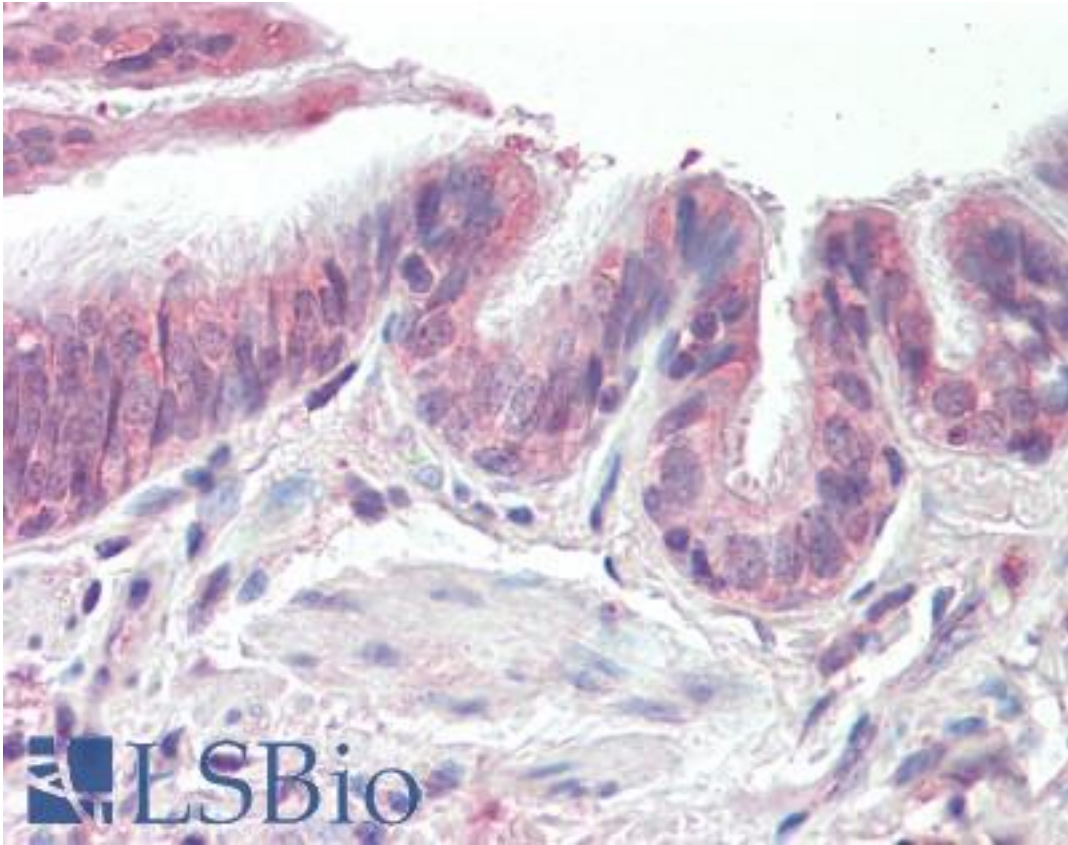


**PSMB3 Goat anti-Human Polyclonal (Internal) Antibody - LS-B9527 - LSBio**

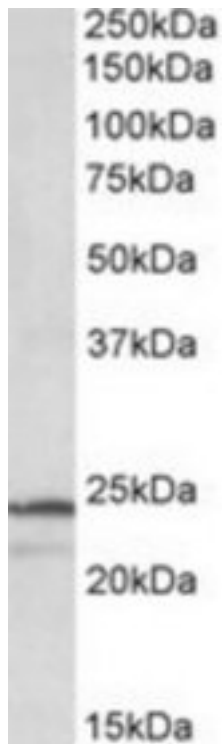
<b>CatalogID:</b>	LS-B9527
<b>Validation:</b>	This antibody replaces catalog number LS-C139637. It has been validated for use in the following assays: IHC-P.
<b>Target:</b>	proteasome (prosome, macropain) subunit, beta type, 3 (PSMB3)
<b>Synonyms:</b>	PSMB3 Antibody, HC10-II Antibody, Macropain theta chain Antibody, Proteasome chain 13 Antibody, Proteasome theta chain Antibody, Proteasome subunit beta type-3 Antibody, C10-ii Antibody, Proteasome component C10-II Antibody
<b>Family / Subfamily:</b>	Protease Non Catalytic / Threonine T1
<b>Host</b>	PSMB3 antibody was produced in Goat
<b>Clonality:</b>	Polyclonal
<b>Immunogen Species:</b>	PSMB3 antibody was raised against Human
<b>Antigen Type:</b>	Synthetic peptide
<b>Immunogen:</b>	PSMB3 antibody was raised against synthetic peptide C-NLYELKEGRQ from an internal region of human PSMB3 (NP_002786.2). Percent identity by BLAST analysis: Human, Gorilla, Gibbon, Monkey, Marmoset, Mouse, Rat, Hamster, Panda, Dog, Bat, Bovine, Horse, Rabbit, Opossum, Turkey, Chicken, Lizard, Xenopus, Trout, Catfish, Salmon, Smelt, Stickleback, Pufferfish, Zebrafish (100%); Sea anemone, Ant, Beetle (80%).
<b>Specificity:</b>	Human PSMB3.
<b>Epitope:</b>	Internal
<b>Reactivity:</b>	Human, Gorilla, Gibbon, Monkey, Mouse, Rat, Bat, Bovine, Dog, Hamster, Horse, Rabbit, Chicken, Xenopus, Zebrafish
<b>Purification:</b>	Immunoaffinity purified
<b>Presentation:</b>	Tris-buffered saline, pH 7.3, 0.5% BSA, 0.02% sodium azide
<b>Recommended Storage:</b>	Store at -20°C. Minimize freezing and thawing.
<b>Usage Summary:</b>	Peptide ELISA: antibody detection limit dilution 1:16000. Western blot: Approx 24kD band observed in lysates of cell line K562 (calculated MW of 22.9kD according to NP_002786.2). Recommended concentration: 1-3 ug/ml.
<b>Uses:</b>	IHC - Paraffin (10 µg/ml), Western blot (1 - 3 µg/ml), ELISA (1:16000) (Optimal dilution to be determined by the researcher)
<b>Size:</b>	50 µg
<b>Concentration:</b>	0.5 mg/ml

**Immunohistochemistry Image:**



Human Lung, Respiratory Epithelium: Formalin-Fixed, Paraffin-Embedded (FFPE)

**Western Blot Image:**



PSMB3 antibody (1 ug/ml) staining of K562 lysate (35 ug protein/ml in RIPA buffer). Primary incubation was 1 hour. Detected by chemiluminescence.

**Requested From:**

Japan

Laboratory Reagent For In Vitro Research Use Only

Not for resale without prior written consent from LifeSpan BioSciences, Inc.

Created on 9/24/2014

© 2014 LifeSpan BioSciences