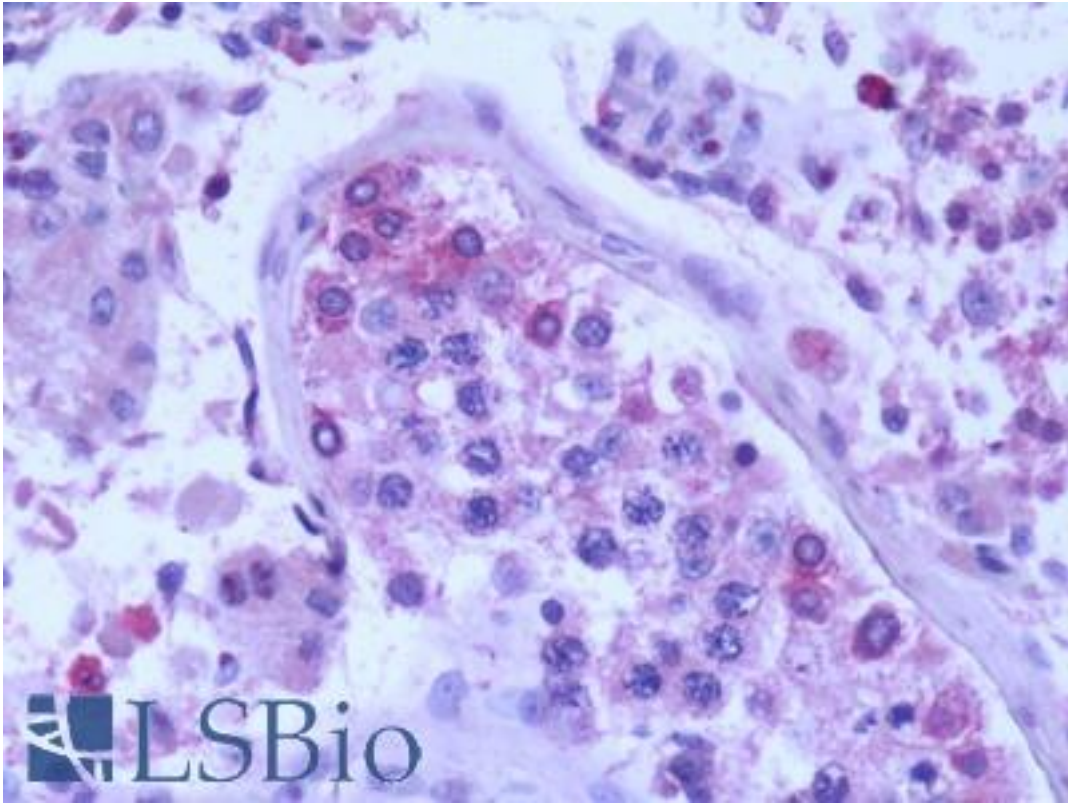


DYDC1 Goat anti-Human Polyclonal (Internal) Antibody - LS-B9524 - LSBio

CatalogID:	LS-B9524
Validation:	This antibody replaces catalog number LS-C112920. It has been validated for use in the following assays: IHC-P.
Target:	DPY30 domain containing 1 (DYDC1)
Synonyms:	DYDC1 Antibody, BA36D19.5 Antibody, DPY30 domain containing 1 Antibody, DPY30D1 Antibody
Host	DYDC1 antibody was produced in Goat
Clonality:	Polyclonal
Immunogen Species:	DYDC1 antibody was raised against Human
Antigen Type:	Synthetic peptide
Immunogen:	DYDC1 antibody was raised against synthetic peptide C-TLAEISDRYGAPN from an internal region of human DYDC1 (NP_620167.1). Percent identity by BLAST analysis: Human, Gorilla, Gibbon, Monkey, Mouse, Rat, Elephant, Dog, Bat, Bovine, Pig, Opossum (100%); Panda, Platypus (92%).
Specificity:	Human DYDC1.
Epitope:	Internal
Reactivity:	Human, Gorilla, Gibbon, Monkey, Mouse, Rat, Bat, Bovine, Dog, Pig
Purification:	Immunoaffinity purified
Presentation:	Tris-buffered saline, pH 7.3, 0.5% BSA, 0.02% sodium azide
Recommended Storage:	Store at -20°C. Minimize freezing and thawing.
Usage Summary:	Peptide ELISA: antibody detection limit dilution 1:128000.
Uses:	IHC - Paraffin (5 µg/ml), ELISA (1:128000) (Optimal dilution to be determined by the researcher)
Size:	50 µg
Concentration:	0.5 mg/ml

Immunohistochemistry Image:



Human, Testis:Formalin-Fixed Paraffin-Embedded (FFPE)

Requested From:

Japan

Laboratory Reagent For In Vitro Research Use Only

Not for resale without prior written consent from LifeSpan BioSciences, Inc.

Created on 9/24/2014

© 2014 LifeSpan BioSciences