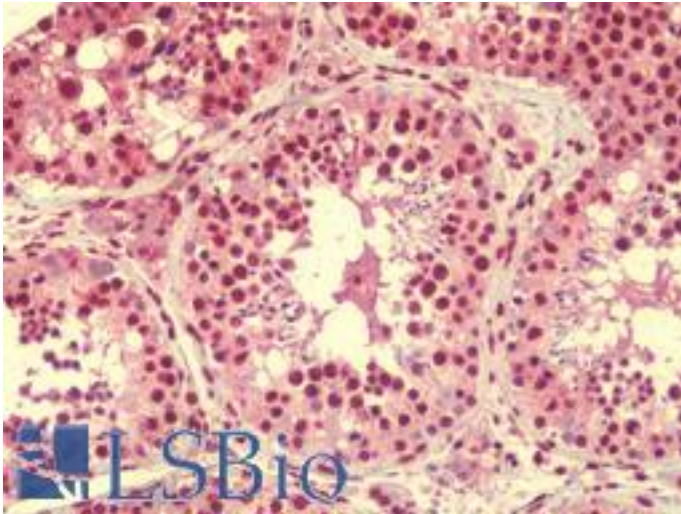


RASSF10 Rabbit anti-Human Polyclonal (N-Terminus) Antibody - LS-B9520 - LSBio

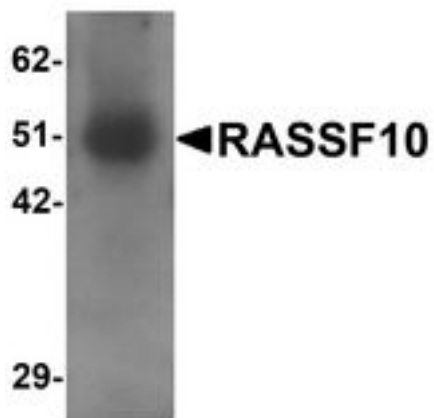
CatalogID:	LS-B9520
Validation:	This antibody replaces catalog number LS-C144379. It has been validated for use in the following assays: IHC-P.
Target:	Ras association (RalGDS/AF-6) domain family (N-terminal) member 10 (RASSF10)
Synonyms:	RASSF10 Antibody
Host	RASSF10 antibody was produced in Rabbit
Clonality:	Polyclonal
Immunogen Species:	RASSF10 antibody was raised against Human
Antigen Type:	Synthetic peptide
Immunogen:	RASSF10 antibody was raised against a 17 amino acid peptide near the amino terminus of human RASSF10
Specificity:	Human RASSF10. RASSF10 antibody will not cross-react with other RAS association domain-containing family members.
Epitope:	N-Terminus
Reactivity:	Human
Purification:	Immunoaffinity purified
Presentation:	PBS, 0.02% sodium azide
Recommended Storage:	Short term 4°C, long term aliquot and store at -20°C, avoid freeze thaw cycles. Store undiluted.
Uses:	IHC - Paraffin (5 µg/ml), Western blot (1 µg/ml), ELISA (Optimal dilution to be determined by the researcher)
Size:	50 µg
Concentration:	1 mg/ml

Immunohistochemistry Image:



Human Testis: Formalin-Fixed, Paraffin-Embedded (FFPE)

Western Blot Image:



Western blot analysis of RASSF10 in human lung tissue lysate with RASSF10 antibody at 1 ug/ml

Requested From:

Japan

Laboratory Reagent For In Vitro Research Use Only

Not for resale without prior written consent from LifeSpan BioSciences, Inc.

Created on 9/24/2014

© 2014 LifeSpan BioSciences