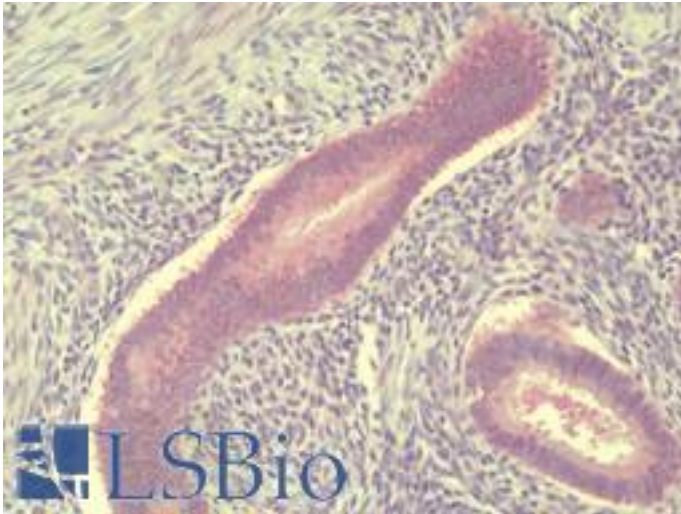


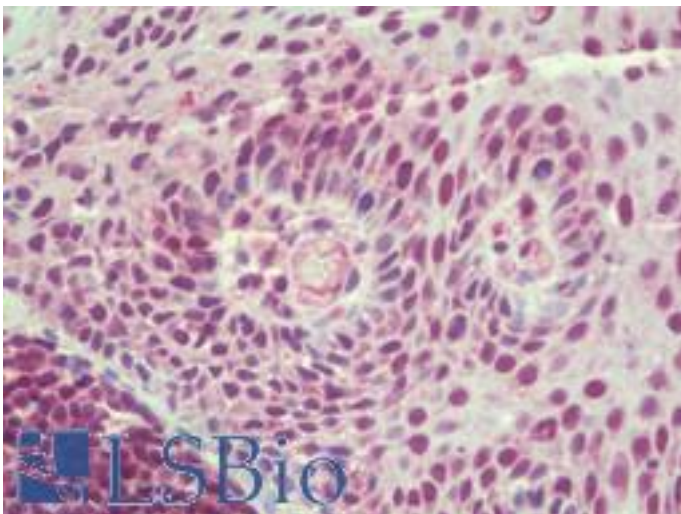
TSN / Translin Rabbit anti-Human Polyclonal (C-Terminus) Antibody - LS-B9516 - LSBio	
CatalogID:	LS-B9516
Validation:	This antibody replaces catalog number LS-C144378. It has been validated for use in the following assays: IHC-P.
Target:	translin (TSN)
Synonyms:	TSN Antibody, C3PO Antibody, BCLF-1 Antibody, REHF-1 Antibody, TBRBP Antibody, TRSLN Antibody, RCHF1 Antibody, Translin Antibody
Host	TSN antibody was produced in Rabbit
Clonality:	Polyclonal
Immunogen Species:	TSN / Translin antibody was raised against Human
Antigen Type:	Synthetic peptide
Immunogen:	TSN / Translin antibody was raised against a 20 amino acid peptide near the carboxy terminus of human Translin
Specificity:	Human TSN / Translin. At least two isoforms of Translin are known to exist; this antibody will detect both.
Epitope:	C-Terminus
Reactivity:	Human, Mouse, Rat
Purification:	Immunoaffinity purified
Presentation:	PBS, 0.02% sodium azide
Recommended Storage:	Short term 4°C, long term aliquot and store at -20°C, avoid freeze thaw cycles. Store undiluted.
Uses:	IHC - Paraffin (5 µg/ml), Immunofluorescence (20 µg/ml), Western blot (0.5 - 1 µg/ml), ELISA (Optimal dilution to be determined by the researcher)
Size:	50 µg
Concentration:	1 mg/ml

Immunohistochemistry Image:



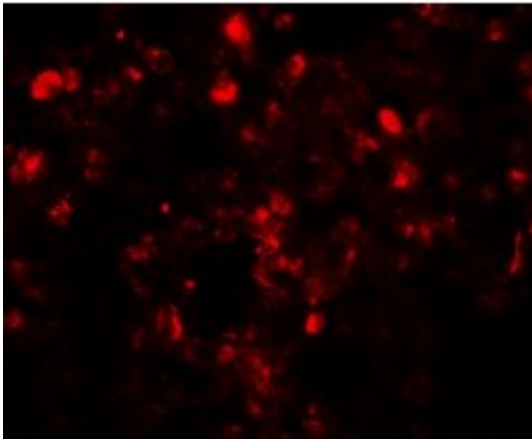
Human Uterus, Endometrium: Formalin-Fixed, Paraffin-Embedded (FFPE)

Immunohistochemistry Image:



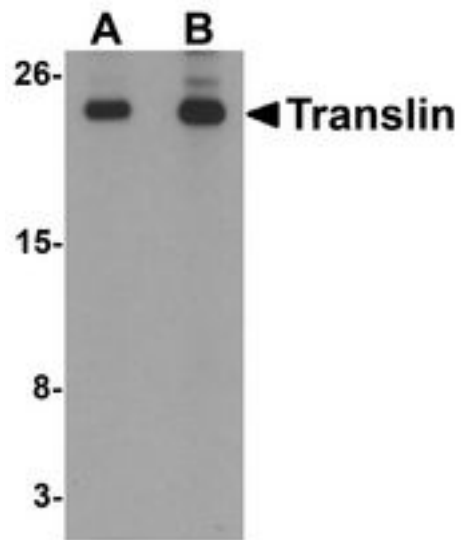
Human Tonsil: Formalin-Fixed, Paraffin-Embedded (FFPE)

Immunofluorescence Image:



Immunofluorescence of Translin in human lung tissue with Translin antibody at 20 $\mu\text{g/mL}$.

Western Blot Image:



Western blot analysis of Translin in rat lung tissue lysate with Translin antibody at (A) 0.5 and (B) 1 $\mu\text{g/ml}$

Requested From:

Japan

Laboratory Reagent For In Vitro Research Use Only

Not for resale without prior written consent from LifeSpan BioSciences, Inc.

Created on 9/24/2014

© 2014 LifeSpan BioSciences