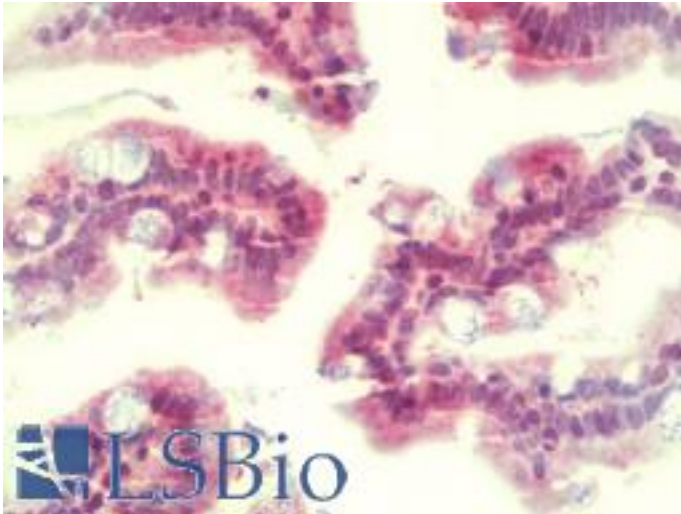


CDX2 Rabbit anti-Human Polyclonal (C-Terminus) Antibody - LS-B9509 - LSBio

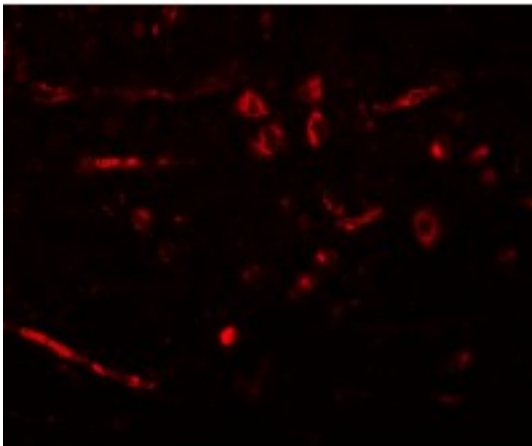
CatalogID:	LS-B9509
Validation:	This antibody replaces catalog number LS-C108657. It has been validated for use in the following assays: IHC-P.
Target:	caudal type homeobox 2 (CDX2)
Synonyms:	CDX2 Antibody, Caudal-type homeobox protein 2 Antibody, CDX3 Antibody, Homeobox protein CDX-2 Antibody, Caudal type homeobox 2 Antibody, CDX-3 Antibody
Host	CDX2 antibody was produced in Rabbit
Clonality:	Polyclonal
Immunogen Species:	CDX2 antibody was raised against Human
Antigen Type:	Synthetic peptide
Immunogen:	CDX2 antibody was raised against a 16 amino acid peptide near the carboxy terminus of human CDX2.
Specificity:	Human CDX2
Epitope:	C-Terminus
Reactivity:	Human, Mouse, Rat
Purification:	Immunoaffinity purified
Presentation:	PBS, 0.02% sodium azide
Recommended Storage:	Short term 4°C, long term aliquot and store at -20°C, avoid freeze thaw cycles. Store undiluted.
Usage Summary:	CDX2 antibody can be used for detection of CDX2 by Western blot at 1-2 ug/ml.
Uses:	IHC - Paraffin (5 µg/ml), Immunofluorescence (20 µg/ml), Western blot (1 µg/ml), ELISA (Optimal dilution to be determined by the researcher)
Size:	50 µg
Concentration:	1 mg/ml

Immunohistochemistry Image:



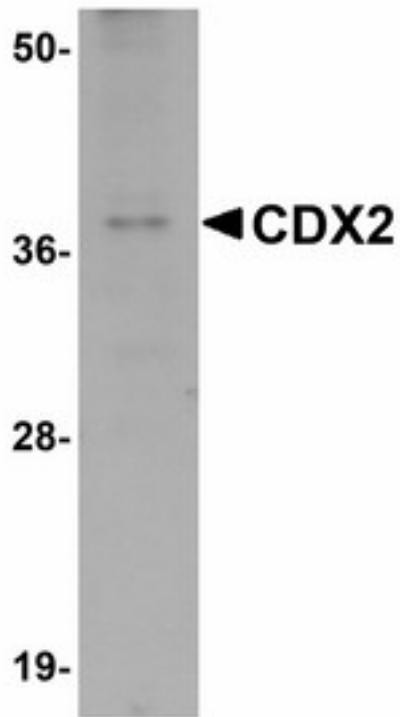
Human Small Intestine: Formalin-Fixed, Paraffin-Embedded (FFPE)

Immunofluorescence Image:



Immunofluorescence of CDX2 in rat brain tissue with CDX2 antibody at 20 ug/ml

Western Blot Image:



Western blot analysis of CDX2 in mouse brain tissue lysate with CDX2 antibody at 1 μ g/mL.

Requested From:

Japan

Laboratory Reagent For In Vitro Research Use Only

Not for resale without prior written consent from LifeSpan BioSciences, Inc.

Created on 9/24/2014

© 2014 LifeSpan BioSciences