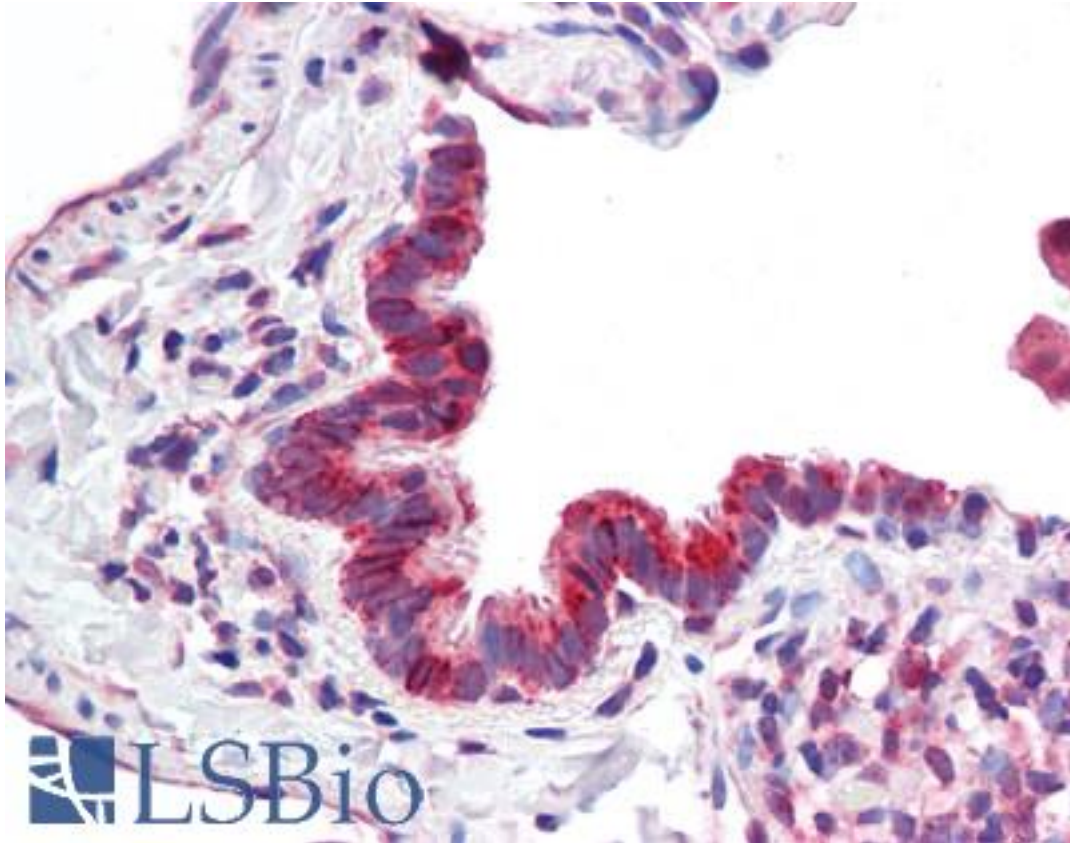


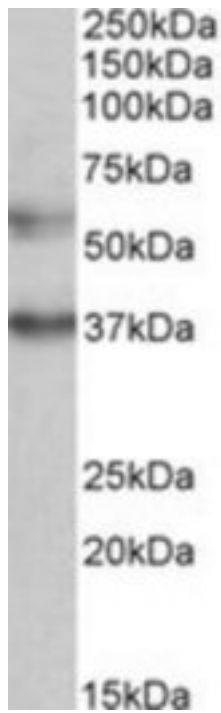
MICU1 / CBARA1 Goat anti-Human Polyclonal (Internal) Antibody - LS-B9505 - LSBio	
CatalogID:	LS-B9505
Validation:	This antibody replaces catalog number LS-C139770. It has been validated for use in the following assays: IHC-P.
Target:	mitochondrial calcium uptake 1 (MICU1)
Synonyms:	MICU1 Antibody, Ara CALC Antibody, CBARA1 Antibody, CALC Antibody, EFHA3 Antibody, Mitochondrial calcium uptake 1 Antibody, Allergen Hom s 4 Antibody, Atopy related autoantigen Antibody, Atopy-related autoantigen CALC Antibody
Host	MICU1 antibody was produced in Goat
Clonality:	Polyclonal
Immunogen Species:	MICU1 / CBARA1 antibody was raised against Human
Antigen Type:	Synthetic peptide
Immunogen:	MICU1 / CBARA1 antibody was raised against synthetic peptide C-EYENRIRAYSTPDK from an internal region of human CBARA1 (NP_006068.2; NP_001182447.1). Percent identity by BLAST analysis: Human, Gorilla, Gibbon, Monkey, Marmoset, Mouse, Rat, Goat, Hamster, Elephant, Panda, Dog, Bat, Bovine, Horse, Rabbit, Pig, Opossum, Turkey, Chicken, Lizard, Xenopus, Stickleback, Pufferfish, Zebrafish, Seq squirt, Ant (100%); Blood fluke, Mosquito, Sea anemone, Water flea, Beetle, Tick (93%); Drosophila (86%).
Specificity:	Human CBARA1. This antibody is expected to recognize reported isoforms 1 and 2 (NP_006068.2; NP_001182447.1).
Epitope:	Internal
Reactivity:	Human, Gorilla, Gibbon, Monkey, Mouse, Rat, Bat, Bovine, Dog, Goat, Hamster, Horse, Pig, Rabbit, Chicken, Xenopus, Zebrafish
Purification:	Immunoaffinity purified
Presentation:	Tris-buffered saline, pH 7.3, 0.5% BSA, 0.02% sodium azide
Recommended Storage:	Store at -20°C. Minimize freezing and thawing.
Usage Summary:	Peptide ELISA: antibody detection limit dilution 1:32000. Western blot: Approx 55kD band observed in lysates of cell line K562 (calculated MW of 54.6kD according to NP_006068.2). Recommended concentration: 0.5-2 ug/ml. An additional band of unknown identity was also consistently observed at 37kD. This band was successfully blocked by incubation with the immunizing peptide.
Uses:	IHC - Paraffin (3.75 µg/ml), Western blot (0.5 - 2 µg/ml), ELISA (1:32000) (Optimal dilution to be determined by the researcher)
Size:	50 µg
Concentration:	0.5 mg/ml

Immunohistochemistry Image:



Human Lung, Respiratory Epithelium: Formalin-Fixed, Paraffin-Embedded (FFPE)

Western Blot Image:



CBARA1 antibody (0.5 ug/ml) staining of K562 lysate (35 ug protein/ml in RIPA buffer).
Primary incubation was 1 hour. Detected by chemiluminescence.

Requested From:

Japan

Laboratory Reagent For In Vitro Research Use Only

Not for resale without prior written consent from LifeSpan BioSciences, Inc.

Created on 9/24/2014

© 2014 LifeSpan BioSciences