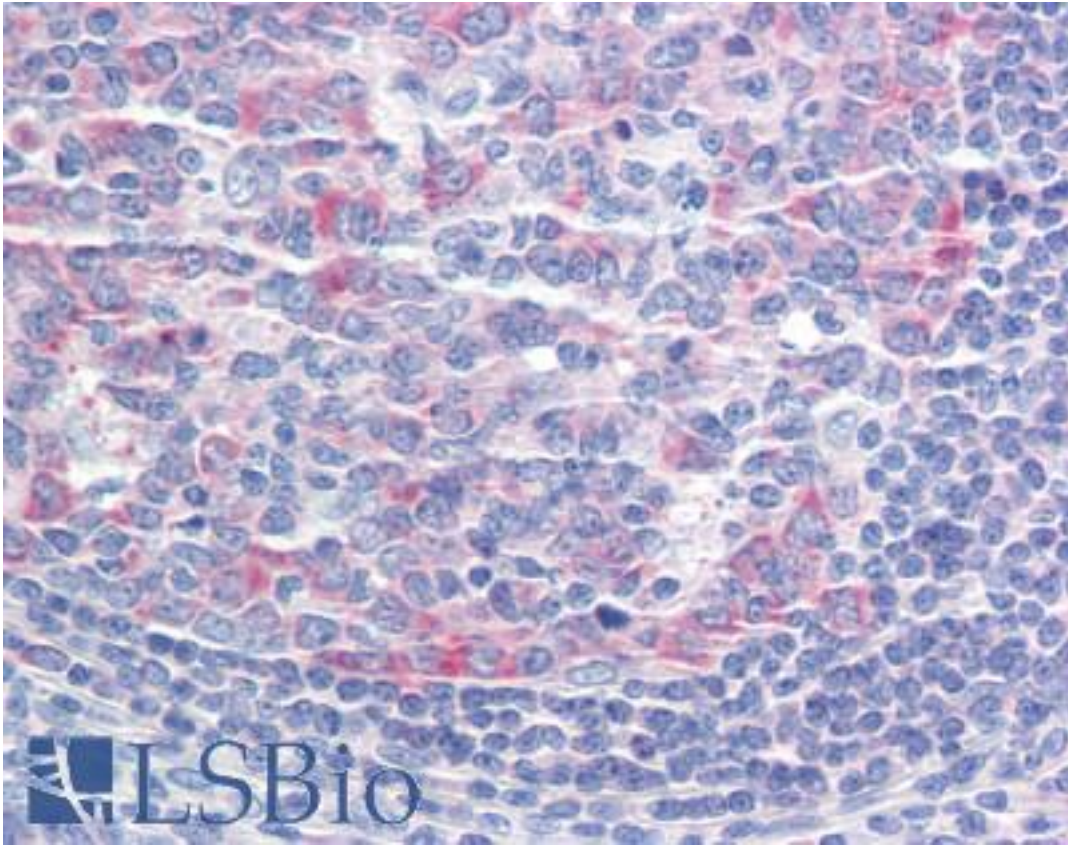


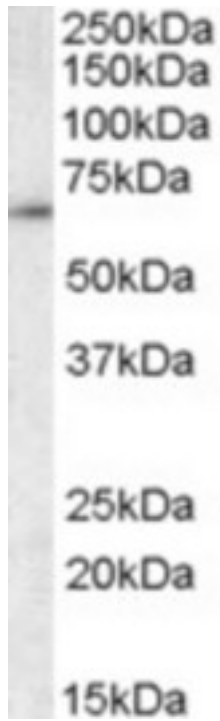
CCT3 Goat anti-Human Polyclonal (C-Terminus) Antibody - LS-B9502 - LSBio	
<b>CatalogID:</b>	LS-B9502
<b>Validation:</b>	This antibody replaces catalog number LS-C112855. It has been validated for use in the following assays: IHC-P.
<b>Target:</b>	chaperonin containing TCP1, subunit 3 (gamma) (CCT3)
<b>Synonyms:</b>	CCT3 Antibody, CCT-gamma Antibody, CCTG Antibody, HTRiC5 Antibody, TCP-1-gamma Antibody, TRiC5 Antibody, PIG48 Antibody
<b>Host</b>	CCT3 antibody was produced in Goat
<b>Clonality:</b>	Polyclonal
<b>Immunogen Species:</b>	CCT3 antibody was raised against Human
<b>Antigen Type:</b>	Synthetic peptide
<b>Immunogen:</b>	CCT3 antibody was raised against synthetic peptide C-GHKKKGDDQSRQGG from the C-terminus (near) of human CCT3 (NP_005989.3; NP_001008883.1; NP_001008800.1). Percent identity by BLAST analysis: Human, Gorilla, Orangutan, Gibbon, Monkey, Marmoset, Elephant, Panda, Dog, Bovine, Rabbit, Pig (100%); Horse (93%); Hamster (86%).
<b>Specificity:</b>	Human CCT3. This antibody is expected to recognize all reported isoforms (NP_005989.3; NP_001008883.1; NP_001008800.1).
<b>Epitope:</b>	C-Terminus
<b>Reactivity:</b>	Human, Gorilla, Orangutan, Gibbon, Monkey, Mouse, Bovine, Dog, Pig, Rabbit
<b>Purification:</b>	Immunoaffinity purified
<b>Presentation:</b>	Tris-buffered saline, pH 7.3, 0.5% BSA, 0.02% sodium azide
<b>Recommended Storage:</b>	Store at -20°C. Minimize freezing and thawing.
<b>Usage Summary:</b>	Peptide ELISA: antibody detection limit dilution 1:32000. Western blot: Approx 65kDa band observed in Mouse and Rat Testis lysates (calculated MW of 60.5kDa according to Human NP_005989.3 and 60.6kDa according to Mouse NP_033966.1 and Rat NP_954522.1). Recommended concentration: 0.01-0.03 ug/ml.
<b>Uses:</b>	IHC - Paraffin (5 µg/ml), Western blot (0.01 - 0.03 µg/ml), ELISA (1:32000) (Optimal dilution to be determined by the researcher)
<b>Size:</b>	50 µg

**Immunohistochemistry Image:**



Human Tonsil: Formalin-Fixed, Paraffin-Embedded (FFPE)

**Western Blot Image:**



CCT3 antibody (0.01 ug/ml) staining of Mouse Testis lysate (35 ug protein/ml in RIPA buffer). Primary incubation was 1 hour. Detected by chemiluminescence.

**Requested From:**

Japan

Laboratory Reagent For In Vitro Research Use Only

Not for resale without prior written consent from LifeSpan BioSciences, Inc.

Created on 9/24/2014

© 2014 LifeSpan BioSciences