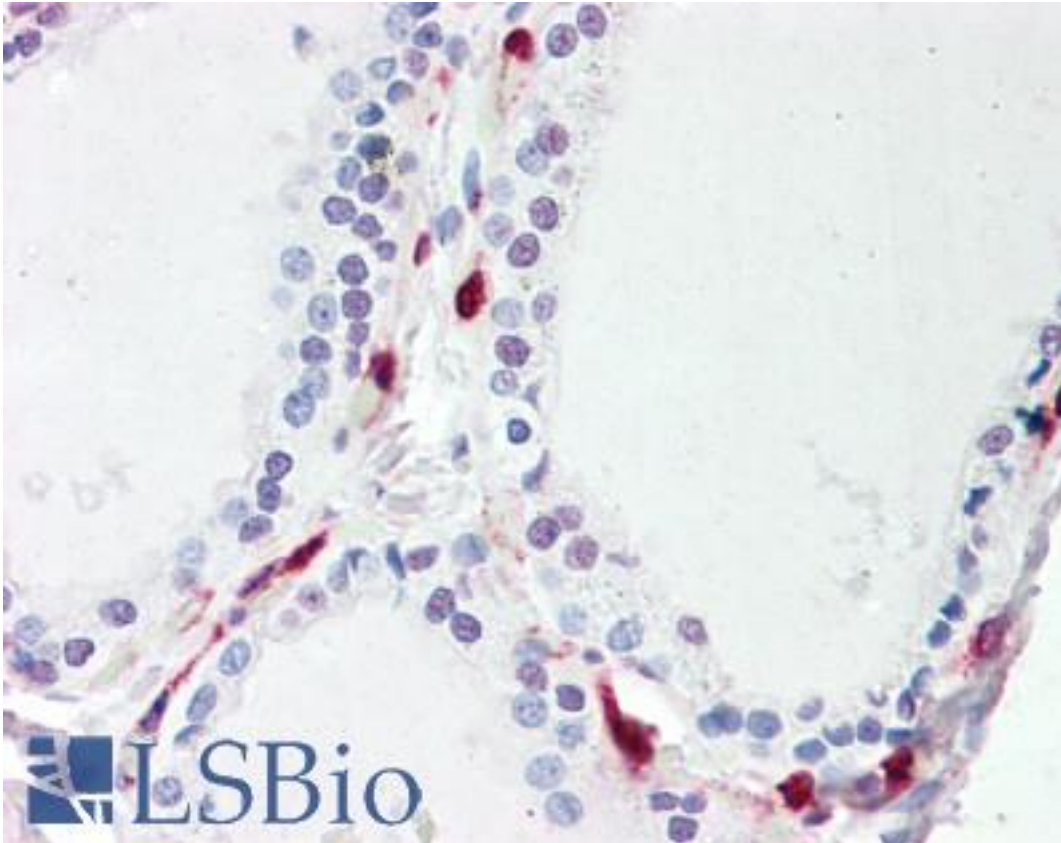


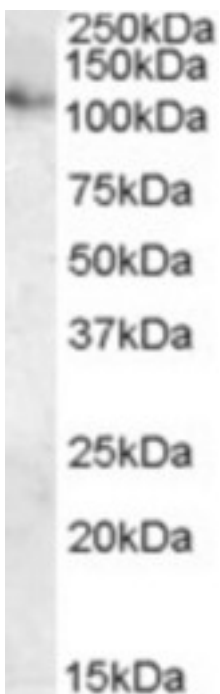
ATP13A1 Goat anti-Human Polyclonal (Internal) Antibody - LS-B9500 - LSBio	
CatalogID:	LS-B9500
Validation:	This antibody replaces catalog number LS-C61708. It has been validated for use in the following assays: IHC-P.
Target:	ATPase type 13A1 (ATP13A1)
Synonyms:	ATP13A1 Antibody, ATP13A Antibody, ATPase type 13A Antibody, ATPase type 13A1 Antibody, Cation transporting ATPase Antibody, CGI-152 Antibody, KIAA1825 Antibody
Family / Subfamily:	Transporter / ATPase - P type, type V
Host	ATP13A1 antibody was produced in Goat
Clonality:	Polyclonal
Immunogen Species:	ATP13A1 antibody was raised against Human
Antigen Type:	Synthetic peptide
Immunogen:	ATP13A1 antibody was raised against synthetic peptide C-REAQARSPEKQEQ from an internal region of human ATP13A1 (NP_065143.2). Percent identity by BLAST analysis: Human, Gorilla, Gibbon, Monkey, Mouse, Rat, Bovine, Rabbit (100%); Hamster, Panda, Bat, Horse, Pig (92%); Elephant, Dog (85%).
Specificity:	Human ATP13A1.
Epitope:	Internal
Reactivity:	Human, Gorilla, Gibbon, Monkey, Mouse, Rat, Bovine, Rabbit
Purification:	Immunoaffinity purified
Presentation:	Tris-buffered saline, pH 7.3, 0.5% BSA, 0.02% sodium azide
Recommended Storage:	Store at -20°C. Minimize freezing and thawing.
Uses:	IHC - Paraffin (5 µg/ml), Western blot (0.3 - 1 µg/ml), ELISA (1:64000) (Optimal dilution to be determined by the researcher)
Size:	50 µg

Immunohistochemistry Image:



Human Thyroid: Formalin-Fixed, Paraffin-Embedded (FFPE)

Western Blot Image:



Antibody (0.3 ug/ml) staining of human kidney lysate (35 ug protein in RIPA buffer). Primary incubation was 1 hour. Detected by chemiluminescence.

Requested From:	Japan
Laboratory Reagent For In Vitro Research Use Only	
Not for resale without prior written consent from LifeSpan BioSciences, Inc.	
Created on 9/24/2014	
© 2014 LifeSpan BioSciences	