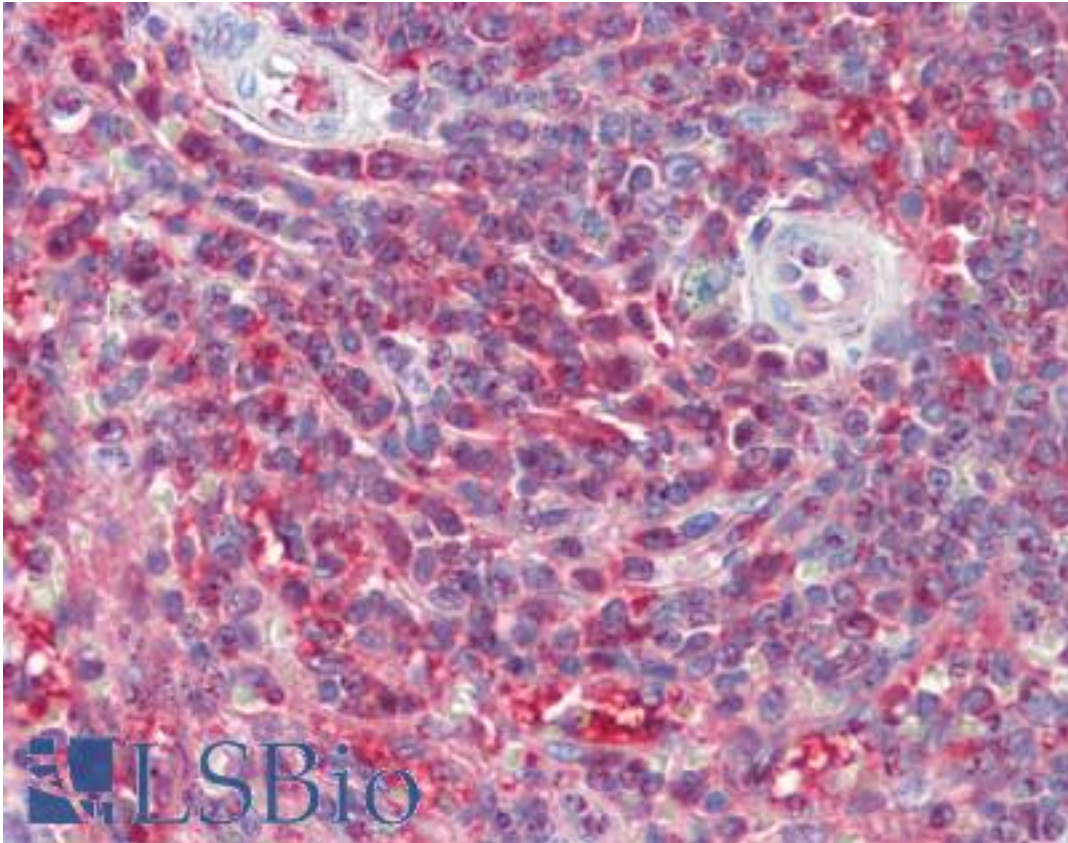


PSME2 Goat anti-Human Polyclonal (C-Terminus) Antibody - LS-B9499 - LSBio

CatalogID:	LS-B9499
Validation:	This antibody replaces catalog number LS-C55332. It has been validated for use in the following assays: IHC-P.
Target:	proteasome (prosome, macropain) activator subunit 2 (PA28 beta) (PSME2)
Synonyms:	PSME2 Antibody, REGbeta Antibody, PA28B Antibody, Proteasome activator 28-beta Antibody, MCP activator, 31-kD subunit Antibody, PA28beta Antibody, REG-beta Antibody
Host	PSME2 antibody was produced in Goat
Clonality:	Polyclonal
Immunogen Species:	PSME2 antibody was raised against Human
Antigen Type:	Synthetic peptide
Immunogen:	PSME2 antibody was raised against synthetic peptide C-NLEKIVNPKGEEKP from the C-terminus of human PSME2 (NP_002809.2). Percent identity by BLAST analysis: Human, Gorilla, Gibbon, Monkey, Marmoset, Mouse, Rat, Hamster, Bat, Bovine, Horse, Pig (100%); Panda, Dog, Opossum, Catfish (93%); Trout, Seabass, Salmon, Sablefish, Pike, Zebrafish (86%).
Specificity:	Human PSME2.
Epitope:	C-Terminus
Reactivity:	Human, Gorilla, Gibbon, Monkey, Mouse, Rat, Bat, Bovine, Hamster, Horse, Pig
Purification:	Immunoaffinity purified
Presentation:	Tris-buffered saline, pH 7.3, 0.5% BSA, 0.02% sodium azide
Recommended Storage:	Store at -20°C. Minimize freezing and thawing.
Uses:	IHC - Paraffin (5 µg/ml), Western blot (1:32000) & (0.5 - 1 µg/ml), ELISA (1:32000) (Optimal dilution to be determined by the researcher)
Size:	50 µg
Concentration:	0.5 mg/ml

Immunohistochemistry Image:



Human Spleen: Formalin-Fixed, Paraffin-Embedded (FFPE)

Western Blot Image:



Antibody (0.5 ug/ml) staining of Human Spleen lysate (35 ug protein in RIPA buffer). Primary incubation was 1 hour. Detected by chemiluminescence.

Requested From:

Japan

Laboratory Reagent For In Vitro Research Use Only

Not for resale without prior written consent from LifeSpan BioSciences, Inc.

Created on 9/24/2014

© 2014 LifeSpan BioSciences