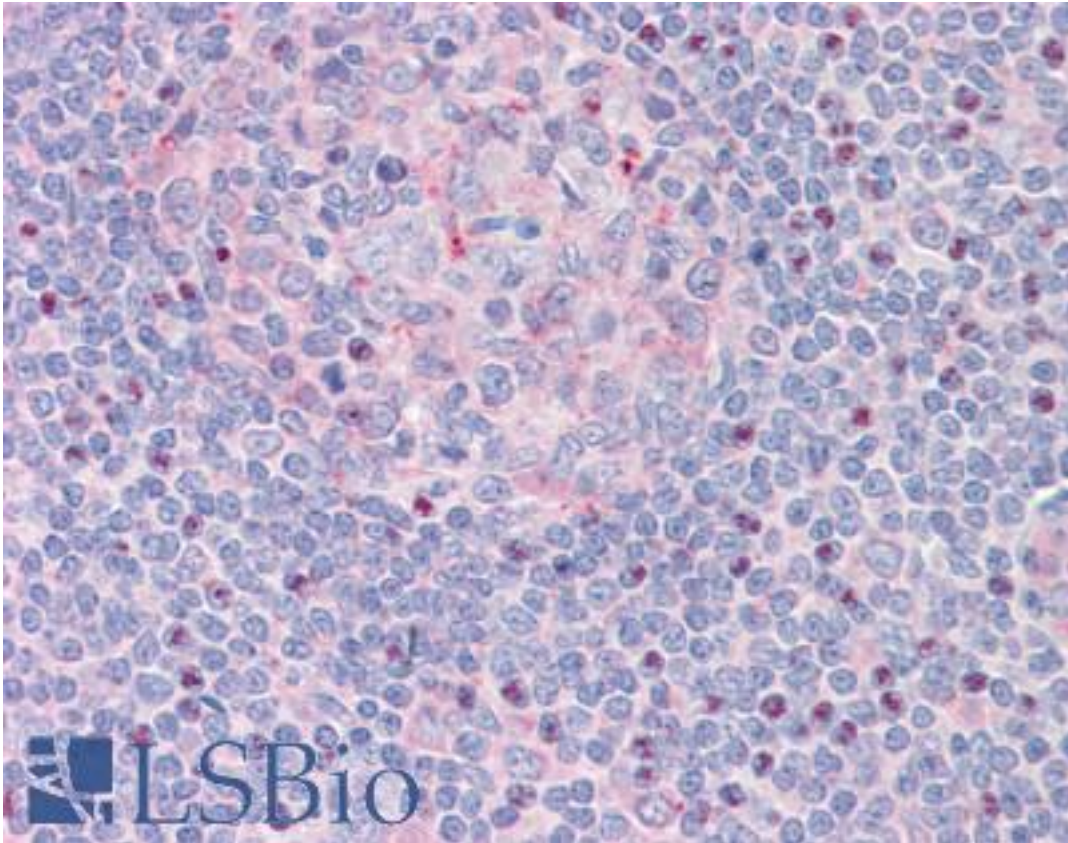


CTDSP1 / SCP1 Goat anti-Human Polyclonal (Internal) Antibody - LS-B9498 - LSBio	
CatalogID:	LS-B9498
Validation:	This antibody replaces catalog number LS-C154777. It has been validated for use in the following assays: IHC-P.
Target:	CTD (carboxy-terminal domain, RNA polymerase II, polypeptide A) small phosphatase 1 (CTDSP1)
Synonyms:	CTDSP1 Antibody, NIF3 Antibody, NLIIF Antibody, NLI-IF Antibody, SCP1 Antibody, NLI-interacting factor 3 Antibody, Small CTD phosphatase 1 Antibody
Host	CTDSP1 antibody was produced in Goat
Clonality:	Polyclonal
Immunogen Species:	CTDSP1 / SCP1 antibody was raised against Human
Antigen Type:	Synthetic peptide
Immunogen:	CTDSP1 / SCP1 antibody was raised against synthetic peptide EAKAQDSDKIC from an internal region of human CTDSP1 (NP_067021.1; NP_872580.1). Percent identity by BLAST analysis: Human, Chimpanzee, Gorilla, Orangutan, Galago, Marmoset, Mouse, Bovine, Hamster, Elephant, Rabbit, Guinea pig (100%); Monkey, Rat, Dog, Panda (91%); Opossum (82%).
Specificity:	Human CTDSP1. This antibody is expected to recognise both reported isoforms (NP_067021 and NP_872580)
Epitope:	Internal
Reactivity:	Human, Chimpanzee, Gorilla, Orangutan, Mouse, Bovine, Guinea pig, Hamster, Rabbit
Purification:	Immunoaffinity purified
Presentation:	Tris-buffered saline, pH 7.3, 0.5% BSA, 0.02% sodium azide
Recommended Storage:	Store at -20°C. Minimize freezing and thawing.
Usage Summary:	Peptide ELISA: antibody detection limit dilution 1:16000. Western blot: Approx 30kD band observed in Mouse Testis lysates (calculated MW of 29.3kD according to Mouse NP_694728.1). Recommended concentration: 0.1-0.3 ug/ml.
Uses:	IHC - Paraffin (5 µg/ml), Western blot (0.1 - 0.3 µg/ml), ELISA (1:16000) (Optimal dilution to be determined by the researcher)
Size:	50 µg
Concentration:	0.5 mg/ml

Immunohistochemistry Image:



Human Tonsil: Formalin-Fixed, Paraffin-Embedded (FFPE)

Requested From:

Japan

Laboratory Reagent For In Vitro Research Use Only

Not for resale without prior written consent from LifeSpan BioSciences, Inc.

Created on 9/24/2014

© 2014 LifeSpan BioSciences