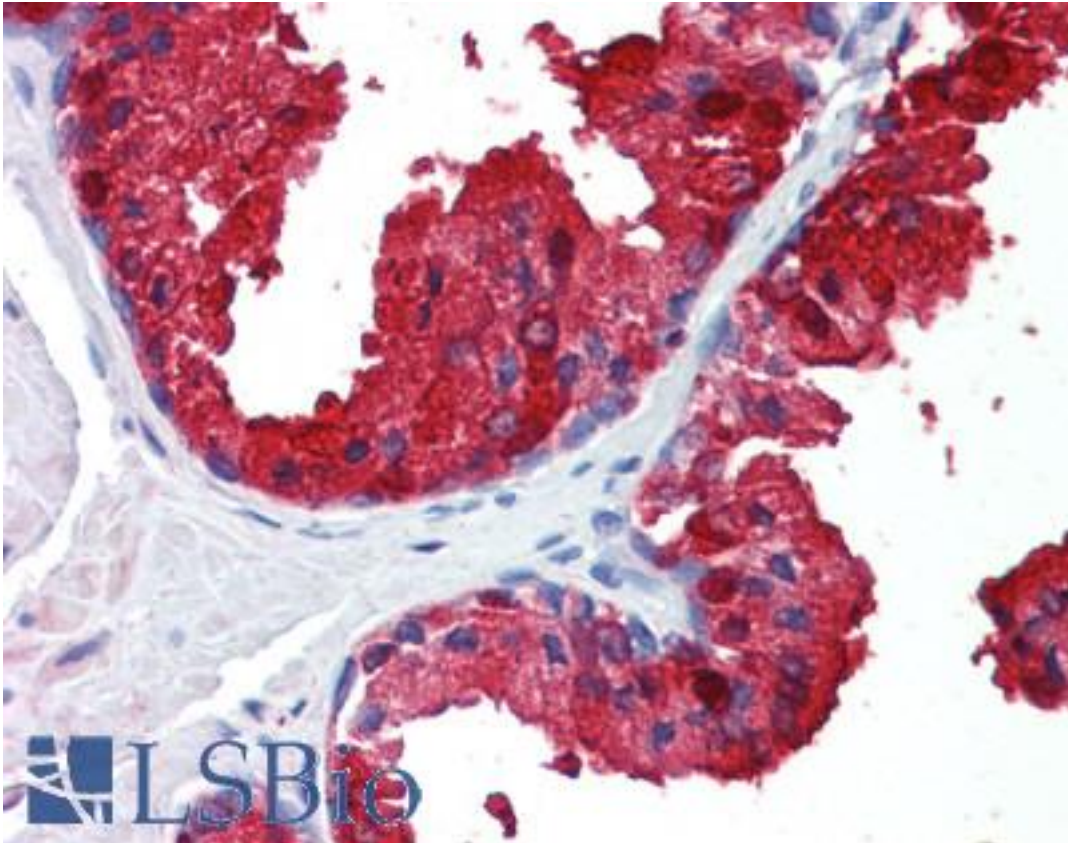


SORD Goat anti-Human Polyclonal (C-Terminus) Antibody - LS-B9496 - LSBio	
CatalogID:	LS-B9496
Validation:	This antibody replaces catalog number LS-C55509. It has been validated for use in the following assays: IHC-P.
Target:	sorbitol dehydrogenase (SORD)
Synonyms:	SORD Antibody, L-iditol 2-dehydrogenase Antibody, SORD1 Antibody, Sorbitol dehydrogenase Antibody
Host	SORD antibody was produced in Goat
Clonality:	Polyclonal
Immunogen Species:	SORD antibody was raised against Human
Antigen Type:	Synthetic peptide
Immunogen:	SORD antibody was raised against synthetic peptide KIMLKCDPSDQNP from the C-terminus of human SORD (NP_003095.2). Percent identity with other species by BLAST analysis: Human (100%), Gorilla (92%), Orangutan (92%), Gibbon (92%), Monkey (92%), Rabbit (92%), Chicken (92%), Platypus (92%), Marmoset (85%), Sheep (85%), Hamster (85%), Elephant (85%), Panda (85%), Dog (85%), Horse (85%), Opossum (85%), Turkey (85%), Salmon (85%).
Specificity:	Human SORD.
Epitope:	C-Terminus
Reactivity:	Human, Mouse
Purification:	Immunoaffinity purified
Presentation:	Tris-buffered saline, pH 7.3, 0.5% BSA, 0.02% sodium azide
Recommended Storage:	Store at -20°C. Minimize freezing and thawing.
Uses:	IHC - Paraffin (5 µg/ml), Western blot (1:64000) & (0.1 - 1 µg/ml), ELISA (1:64000) (Optimal dilution to be determined by the researcher)
Size:	50 µg

Immunohistochemistry Image:



Human Prostate: Formalin-Fixed, Paraffin-Embedded (FFPE)

Western Blot Image:



Antibody (0.1 ug/ml) staining of Mouse Kidney lysate (35 ug protein in RIPA buffer). Primary incubation was 1 hour. Detected by chemiluminescence.

Requested From:

Japan

Laboratory Reagent For In Vitro Research Use Only

Not for resale without prior written consent from LifeSpan BioSciences, Inc.

Created on 9/24/2014

© 2014 LifeSpan BioSciences