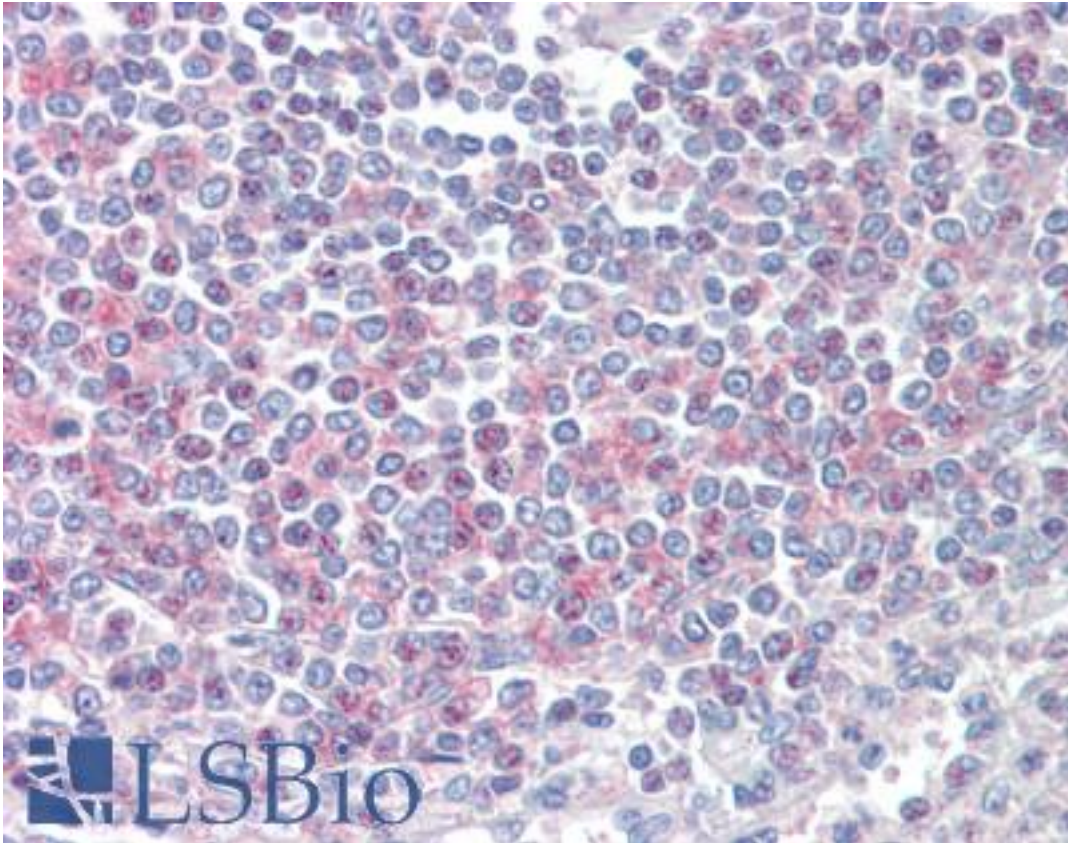


CD2BP2 Goat anti-Human Polyclonal (N-Terminus) Antibody - LS-B9495 - LSBio	
CatalogID:	LS-B9495
Validation:	This antibody replaces catalog number LS-C54630. It has been validated for use in the following assays: IHC-P.
Target:	CD2 (cytoplasmic tail) binding protein 2 (CD2BP2)
Synonyms:	CD2BP2 Antibody, CD2 tail-binding protein 2 Antibody, KIAA1178 Antibody, FWP010 Antibody, Snu40 Antibody, U5 snRNP 52K protein Antibody, U5-52K Antibody, PPP1R59 Antibody, LIN1 Antibody
Host	CD2BP2 antibody was produced in Goat
Clonality:	Polyclonal
Immunogen Species:	CD2BP2 antibody was raised against Human
Antigen Type:	Synthetic peptide
Immunogen:	CD2BP2 antibody was raised against synthetic peptide PKRKVTFQGVGDE-C from the N-terminus of human CD2BP2 (NP_006101.1). Percent identity by BLAST analysis: Human, Gorilla, Orangutan, Gibbon, Monkey, Marmoset, Mouse, Rat, Hamster, Panda, Dog, Bat, Horse (100%); Elephant, Bovine, Pig (92%).
Specificity:	Human CD2BP2.
Epitope:	N-Terminus
Reactivity:	Human, Gorilla, Orangutan, Gibbon, Monkey, Mouse, Rat, Bat, Dog, Hamster, Horse
Purification:	Immunoaffinity purified
Presentation:	Tris-buffered saline, pH 7.3, 0.5% BSA, 0.02% sodium azide
Recommended Storage:	Store at -20°C. Minimize freezing and thawing.
Uses:	IHC - Paraffin (5 µg/ml), ELISA (1:32000) (Optimal dilution to be determined by the researcher)
Size:	50 µg

Immunohistochemistry Image:



Human Spleen: Formalin-Fixed, Paraffin-Embedded (FFPE)

Western Blot Image:



Antibody (0.3 ug/ml) staining of Human Thymus lysate (35 ug protein in RIPA buffer). Primary incubation was 1 hour. Detected by chemiluminescence.

Requested From:	Japan
Laboratory Reagent For In Vitro Research Use Only	
Not for resale without prior written consent from LifeSpan BioSciences, Inc.	
Created on 9/24/2014	
© 2014 LifeSpan BioSciences	