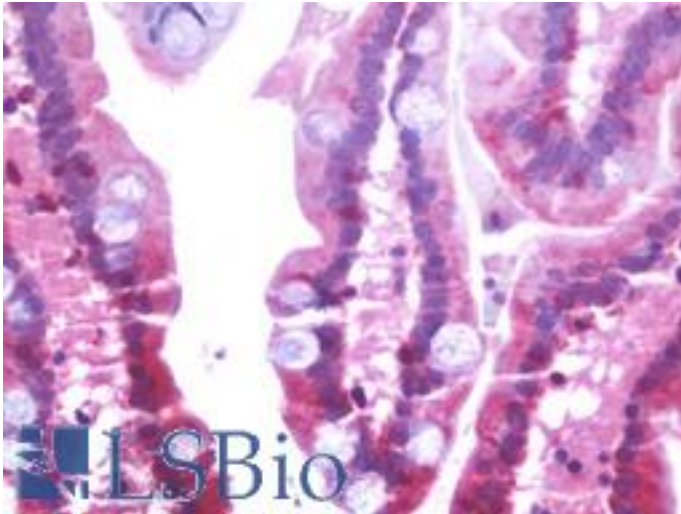


SLC6A19 Rabbit anti-Human Polyclonal Antibody - LS-B9490 - LSBio

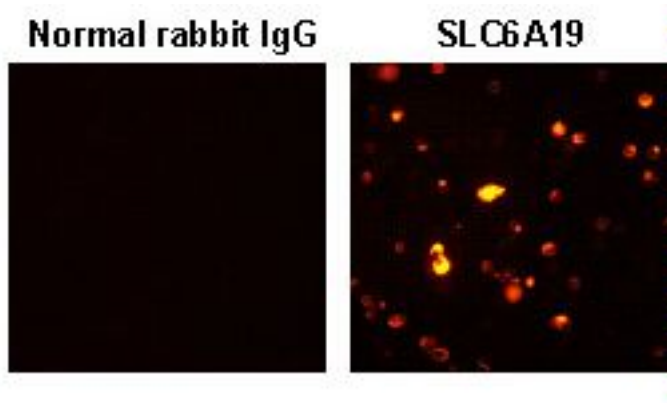
CatalogID:	LS-B9490
Validation:	This antibody replaces catalog number LS-C179244. It has been validated for use in the following assays: IHC-P.
Target:	solute carrier family 6 (neutral amino acid transporter), member 19 (SLC6A19)
Synonyms:	SLC6A19 Antibody
Host	SLC6A19 antibody was produced in Rabbit
Clonality:	Polyclonal
Isotype:	IgG
Immunogen Species:	SLC6A19 antibody was raised against Human
Antigen Type:	Synthetic peptide
Immunogen:	SLC6A19 antibody was raised against human SLC6A19-derived synthetic peptide.
Specificity:	Human SLC6A19
Reactivity:	Human
Purification:	Affinity purified
Presentation:	PBS, pH 7.2, 50% glycerol
Recommended Storage:	Long term: -20°C; Short term: +4°C; Avoid freeze-thaw cycles.
Usage Summary:	IHC: Heat treatment is necessary for paraffin-embedded sections;
Uses:	IHC - Paraffin (1:100), ICC (1:1000), Flow Cytometry (1:1000) (Optimal dilution to be determined by the researcher)
Uses Not Recommended:	Western blot
Size:	50 µl

Immunohistochemistry Image:

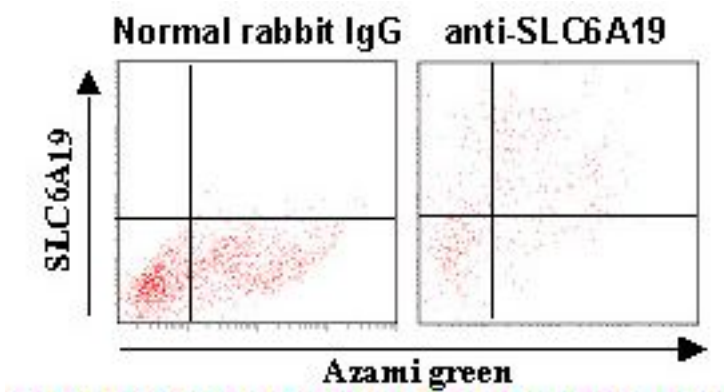


Human Small Intestine: Formalin-Fixed, Paraffin-Embedded (FFPE)

Immunocytochemistry Image:



Flow Cytometry Image:



Requested From:

Japan

Laboratory Reagent For In Vitro Research Use Only

Not for resale without prior written consent from LifeSpan BioSciences, Inc.

Created on 9/24/2014

© 2014 LifeSpan BioSciences