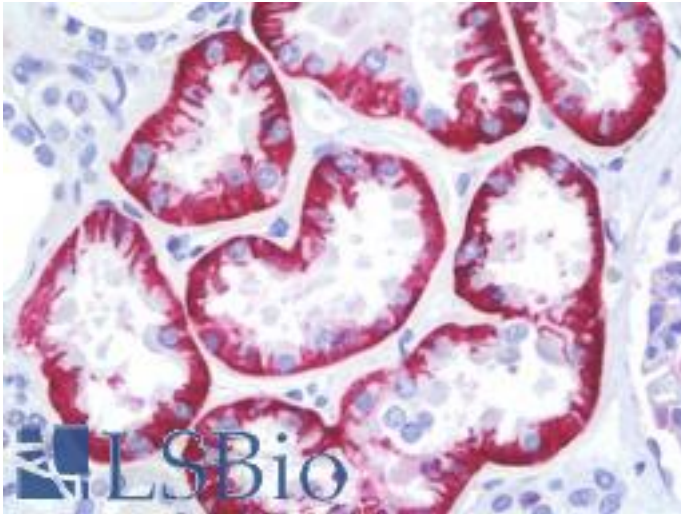


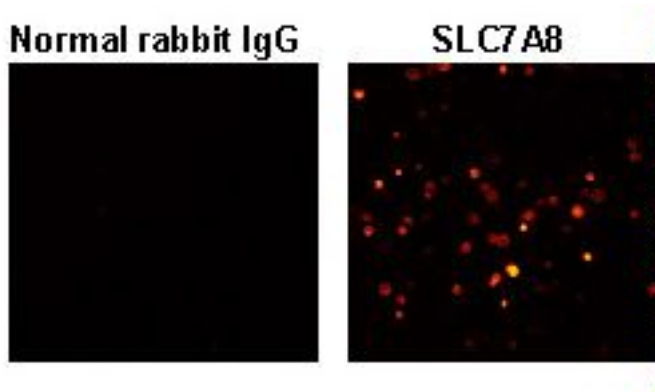
SLC7A8 / LAT2 Rabbit anti-Human Polyclonal Antibody - LS-B9489 - LSBio	
<b>CatalogID:</b>	LS-B9489
<b>Validation:</b>	This antibody replaces catalog number LS-C179233. It has been validated for use in the following assays: IHC-P.
<b>Target:</b>	solute carrier family 7 (amino acid transporter light chain, L system), member 8 (SLC7A8)
<b>Synonyms:</b>	SLC7A8 Antibody, HLAT2 Antibody, LPI-PC1 Antibody, Integral membrane protein E16H Antibody
<b>Family / Subfamily:</b>	Transporter / Cationic amino acid transporter
<b>Host</b>	SLC7A8 antibody was produced in Rabbit
<b>Clonality:</b>	Polyclonal
<b>Isotype:</b>	IgG
<b>Immunogen Species:</b>	SLC7A8 / LAT2 antibody was raised against Human
<b>Antigen Type:</b>	Synthetic peptide
<b>Immunogen:</b>	SLC7A8 / LAT2 antibody was raised against human SLC7A8-derived synthetic peptide.
<b>Specificity:</b>	Human SLC7A8
<b>Reactivity:</b>	Human
<b>Purification:</b>	Affinity purified
<b>Presentation:</b>	PBS, pH 7.2, 50% glycerol
<b>Recommended Storage:</b>	Long term: -20°C; Short term: +4°C; Avoid freeze-thaw cycles.
<b>Usage Summary:</b>	IHC: Heat treatment is necessary for paraffin-embedded sections;
<b>Uses:</b>	IHC - Paraffin (1:100), ICC (1:200), Western blot (1:1000), Flow Cytometry (1:200) (Optimal dilution to be determined by the researcher)
<b>Size:</b>	50 µl

**Immunohistochemistry Image:**

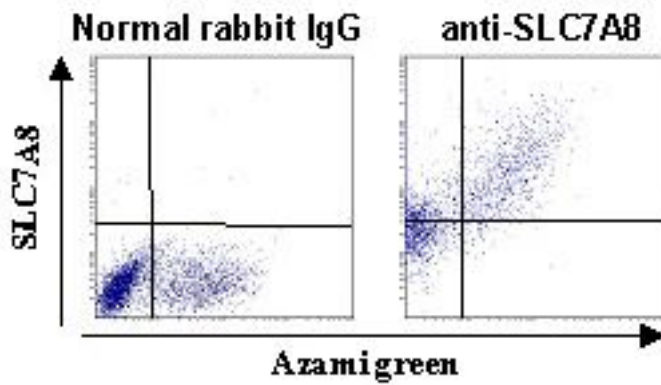


Human Kidney: Formalin-Fixed, Paraffin-Embedded (FFPE)

**Immunocytochemistry Image:**

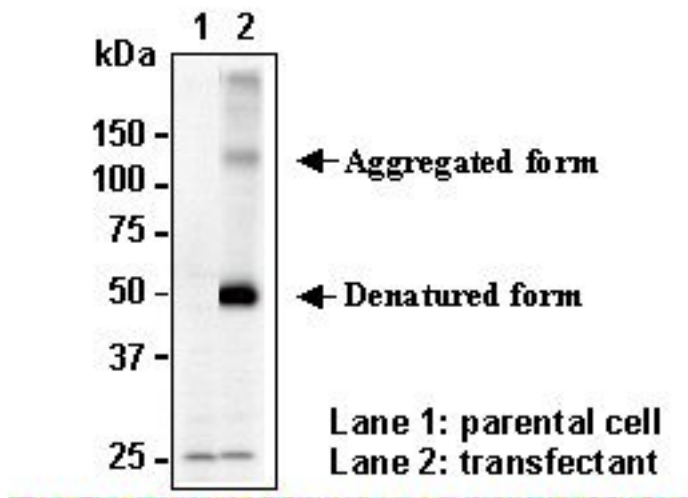


**Flow Cytometry Image:**



Western Blot Image:

■ Western blotting



Requested From:

Japan

Laboratory Reagent For In Vitro Research Use Only

Not for resale without prior written consent from LifeSpan BioSciences, Inc.

Created on 9/24/2014

© 2014 LifeSpan BioSciences