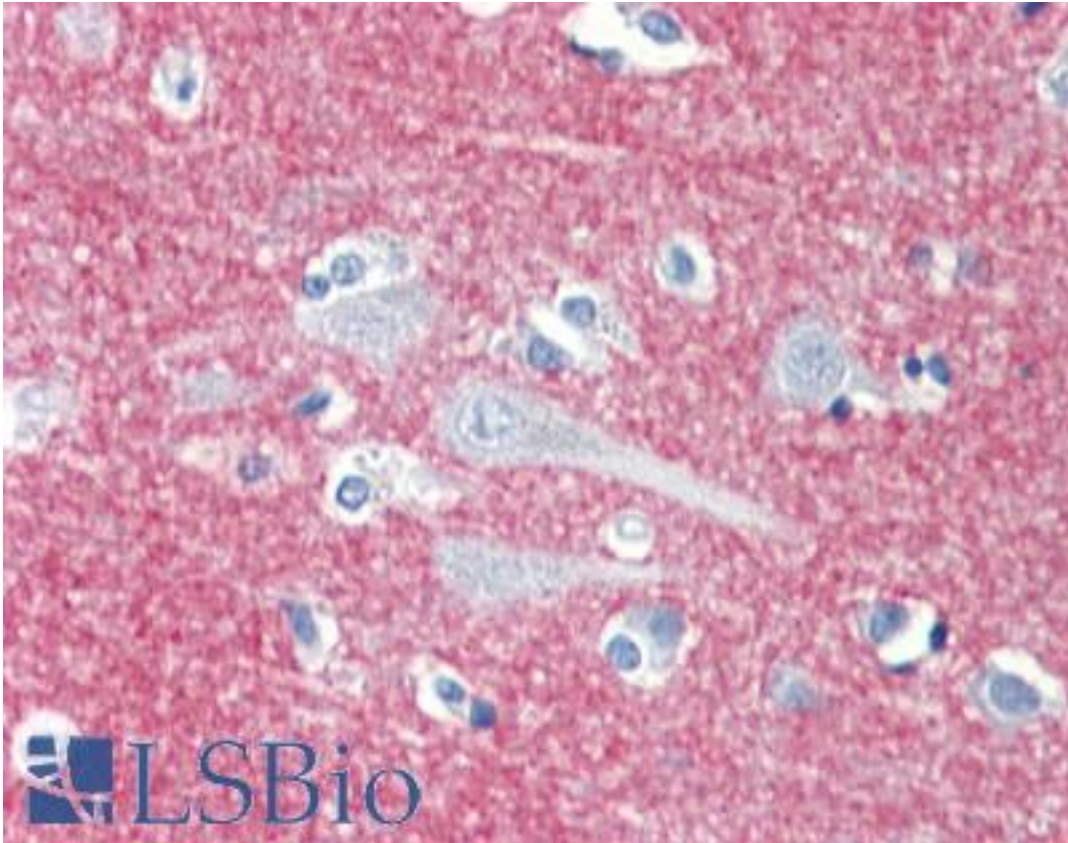


CD172A / SIRPA Rabbit anti-Human Polyclonal Antibody - LS-B9485 - LSBio	
CatalogID:	LS-B9485
Validation:	This antibody replaces catalog number LS-C153059. It has been validated for use in the following assays: IHC-P.
Target:	signal-regulatory protein alpha (SIRPA)
Synonyms:	SIRPA Antibody, CD172A Antibody, CD172a antigen Antibody, Inhibitory receptors shps-1 Antibody, Inhibitory receptor SHPS-1 Antibody, Macrophage fusion receptor Antibody, MyD-1 antigen Antibody, p84 Antibody, SHPS-1 Antibody, SHPS1 Antibody, SIRP Antibody, Sirp-alpha-1 Antibody, Sirp-alpha-3 Antibody, Sirp-alpha1 Antibody, MYD1 Antibody, SIRPalpha Antibody, SIRPalpha2 Antibody, BIT Antibody, MFR Antibody, MYD-1 Antibody, PTPNS1 Antibody, SHP substrate 1 Antibody, Sirp-alpha-2 Antibody
Host	SIRPA antibody was produced in Rabbit
Clonality:	Polyclonal
Immunogen Species:	CD172A / SIRPA antibody was raised against Human
Immunogen:	CD172A / SIRPA antibody was raised against peptide corresponding to the C-terminus of human SIRP-alpha
Specificity:	Recognizes full-length human SIRP-alpha (75-110 kD). Positive control: Whole cell lysate from THP-1 cells.
Reactivity:	Human, Mouse, Rat, Bovine
Purification:	Immunoaffinity purified
Presentation:	PBS, pH 7.4, 0.02% sodium azide.
Recommended Storage:	Store at -20°C, stable for one year. Avoid repeated freeze thaw cycles.
Uses:	IHC - Paraffin (5 µg/ml), Western blot (1:1000 - 1:2000) (Optimal dilution to be determined by the researcher)
Size:	50 µg
Concentration:	1 mg/ml

Immunohistochemistry Image:



Human Brain, Cortex: Formalin-Fixed, Paraffin-Embedded (FFPE)

Requested From:

Japan

Laboratory Reagent For In Vitro Research Use Only

Not for resale without prior written consent from LifeSpan BioSciences, Inc.

Created on 9/24/2014

© 2014 LifeSpan BioSciences