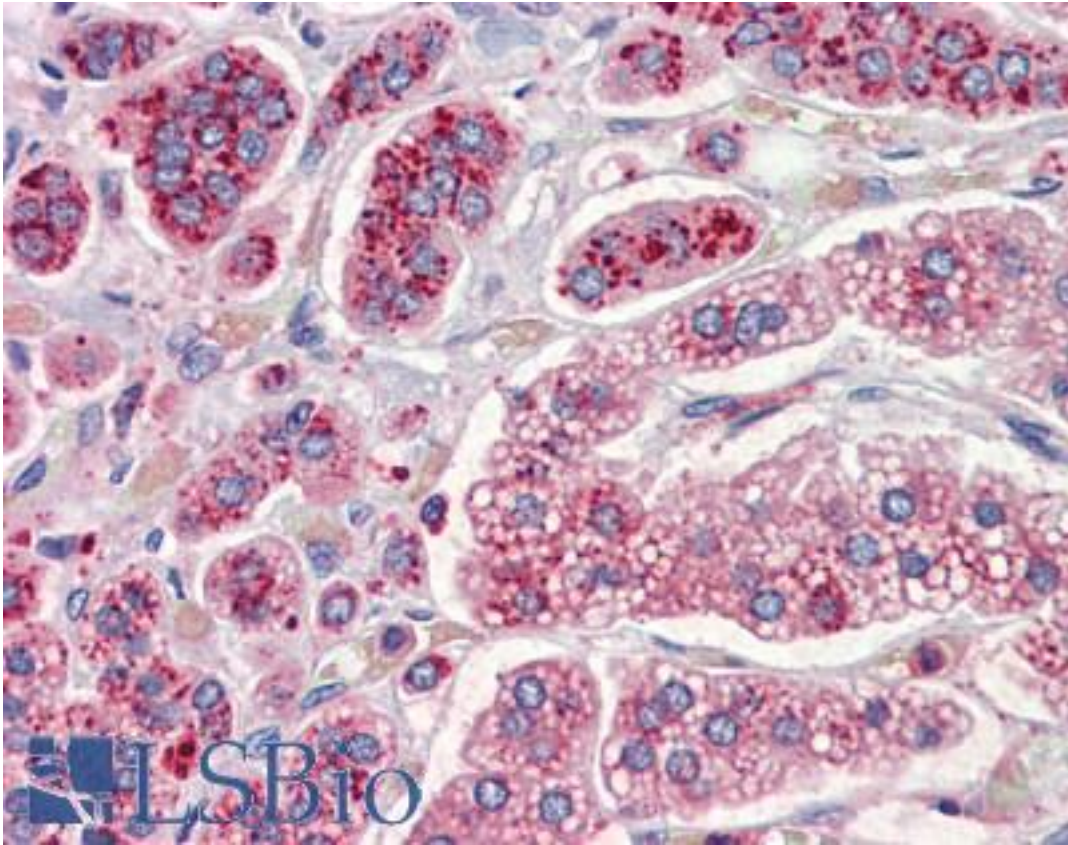


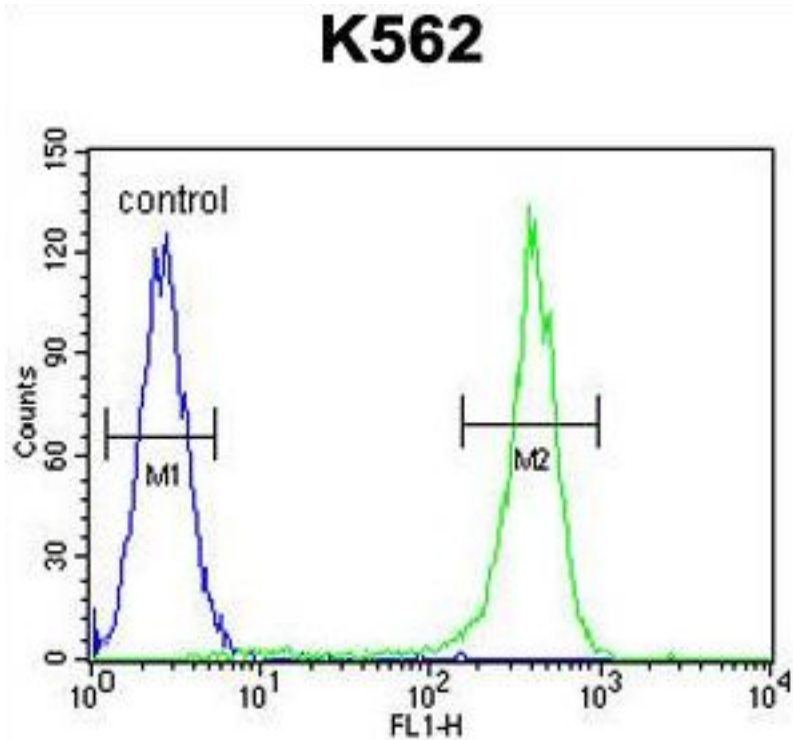
CRHR2 / CRF2 Receptor Rabbit anti-Human Polyclonal (aa27-58) Antibody - LS-B9473 - LSBio	
CatalogID:	LS-B9473
Validation:	This antibody replaces catalog number LS-C167035. It has been validated for use in the following assays: IHC-P.
Target:	corticotropin releasing hormone receptor 2 (CRHR2)
Synonyms:	CRHR2 Antibody, CRF-R-2 Antibody, CRF-R2 Antibody, CRF2R Antibody, Crh2 receptor Antibody, CRF2 receptor, beta isoform Antibody, CRFR2 Antibody, CRFR-2 Antibody, CRH-R-2 Antibody, CRH2R Antibody, CRF-RB Antibody, CRF2 Antibody, CRH-R2 Antibody, HM-CRF Antibody
Family / Subfamily:	GPCR / Corticotropin releasing factor
Host	CRHR2 antibody was produced in Rabbit
Clonality:	Polyclonal
Immunogen Species:	CRHR2 / CRF2 Receptor antibody was raised against Human
Antigen Type:	Synthetic peptide
Immunogen:	CRHR2 / CRF2 Receptor antibody was raised against kLH-conjugated synthetic peptide from human CRHR2.
Specificity:	Human CRHR2
Epitope:	aa27-58
Reactivity:	Human
Purification:	Immunoaffinity purified
Presentation:	PBS, 0.09% sodium azide
Recommended Storage:	Maintain refrigerated at 2-8°C for up to 6 months. For long term storage store at -20°C.
Uses:	IHC - Paraffin (1:50 - 1:100), Western blot (1:1000), Flow Cytometry (1:10 - 1:50) (Optimal dilution to be determined by the researcher)
Size:	200 µl

Immunohistochemistry Image:



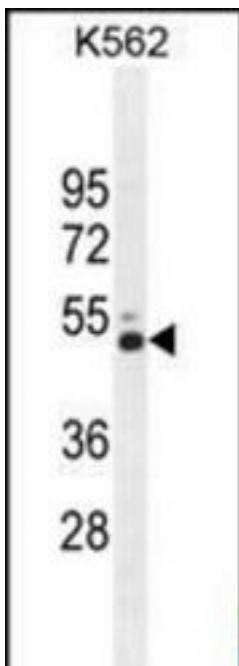
Human Adrenal: Formalin-Fixed, Paraffin-Embedded (FFPE)

Flow Cytometry Image:



CRFR2 Antibody (D35) flow cytometry of K562 cells (right histogram) compared to a negative control cell (left histogram). FITC-conjugated goat-anti-rabbit secondary antibodies were used for the analysis.

Western Blot Image:



CRFR2 Antibody (D35) Western blot of K562 cell line lysates (35 ug/lane). This demonstrates the CRFR2 antibody detected the CRFR2 protein (arrow).

Requested From:	Japan
Laboratory Reagent For In Vitro Research Use Only	
Not for resale without prior written consent from LifeSpan BioSciences, Inc.	
Created on 9/24/2014	
© 2014 LifeSpan BioSciences	