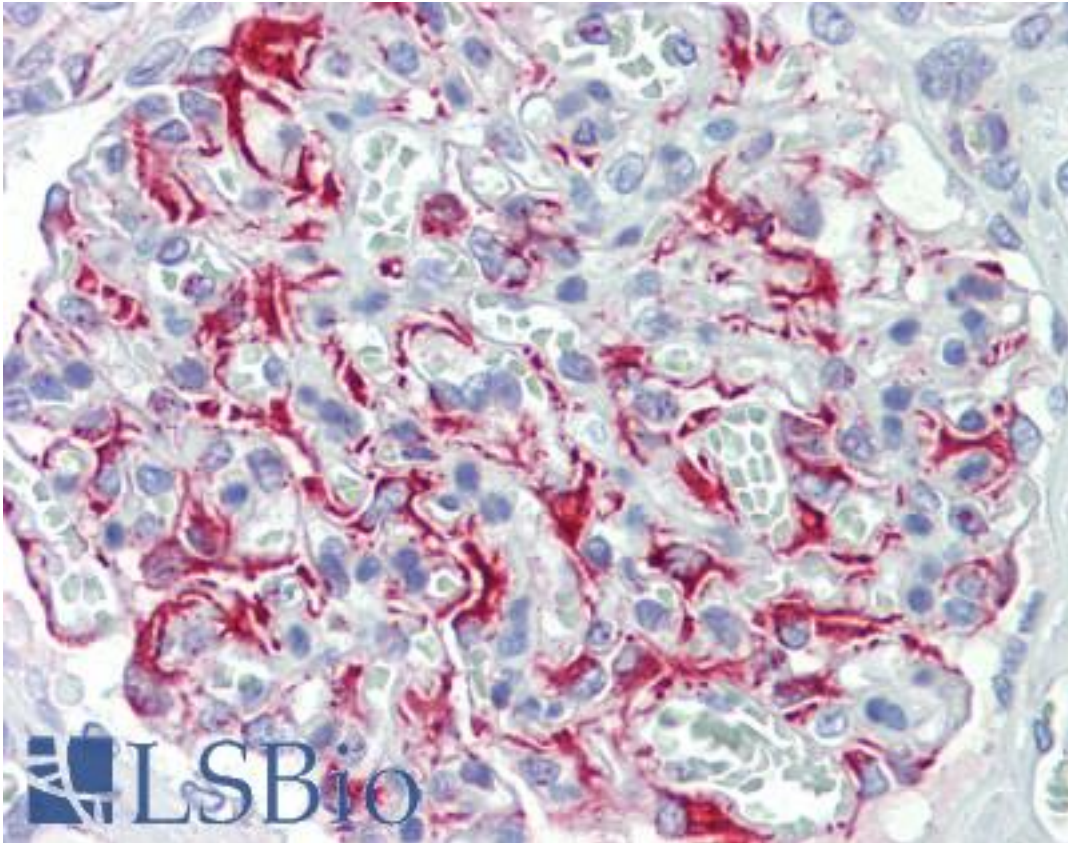


FGF11 / FGF-11 Rabbit anti-Human Polyclonal (aa1-30) Antibody - LS-B9472 - LSBio

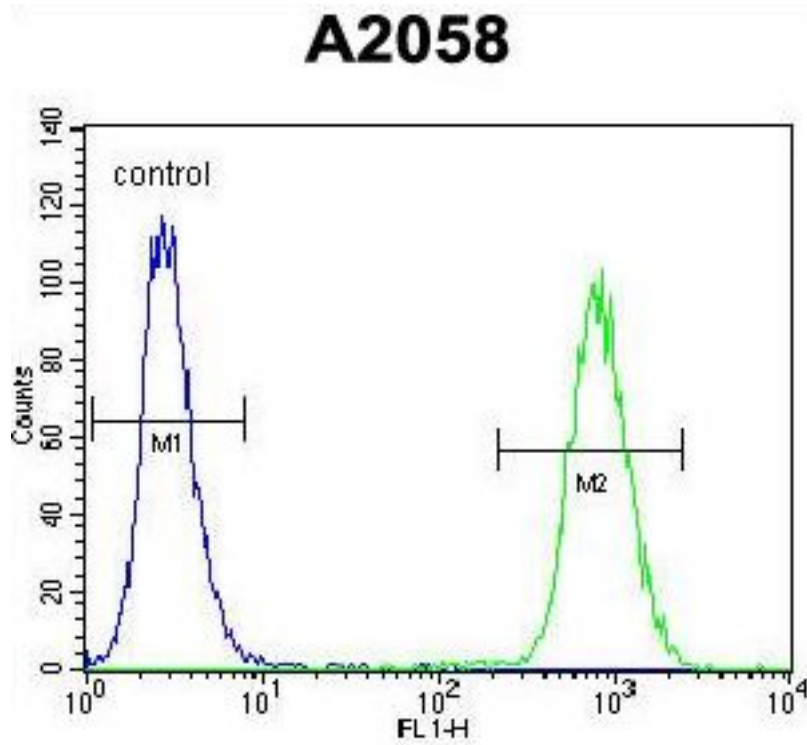
CatalogID:	LS-B9472
Validation:	This antibody replaces catalog number LS-C166129. It has been validated for use in the following assays: IHC-P.
Target:	fibroblast growth factor 11 (FGF11)
Synonyms:	FGF11 Antibody, FHF-3 Antibody, FHF3 Antibody, Fibroblast growth factor 11 Antibody, FGF-11 Antibody
Family / Subfamily:	HBGF / not assigned-HBGF
Host	FGF11 antibody was produced in Rabbit
Clonality:	Polyclonal
Immunogen Species:	FGF11 / FGF-11 antibody was raised against Human
Antigen Type:	Synthetic peptide
Immunogen:	FGF11 / FGF-11 antibody was raised against kLH-conjugated synthetic peptide from N-terminal region of human FGF11.
Specificity:	Human FGF11 / FGF-11
Epitope:	aa1-30
Reactivity:	Human
Purification:	Immunoaffinity purified
Presentation:	PBS, 0.09% sodium azide
Recommended Storage:	Maintain refrigerated at 2-8°C for up to 6 months. For long term storage store at -20°C.
Uses:	IHC - Paraffin (1:10 - 1:50), Western blot (1:1000), Flow Cytometry (1:10 - 1:50) (Optimal dilution to be determined by the researcher)
Size:	200 µl

Immunohistochemistry Image:



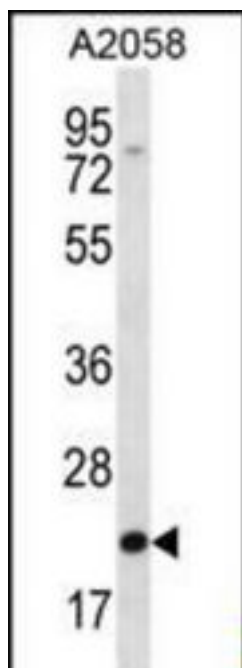
Human Kidney: Formalin-Fixed, Paraffin-Embedded (FFPE)

Flow Cytometry Image:



FGF11 Antibody (N-term) flow cytometry of A2058 cells (right histogram) compared to a negative control cell (left histogram). FITC-conjugated goat-anti-rabbit secondary antibodies were used for the analysis.

Western Blot Image:



FGF11 Antibody (N-term) Western blot of A2058 cell line lysates (35 ug/lane). This demonstrates the FGF11 antibody detected the FGF11 protein (arrow).

Requested From:	Japan
Laboratory Reagent For In Vitro Research Use Only	
Not for resale without prior written consent from LifeSpan BioSciences, Inc.	
Created on 9/24/2014	
© 2014 LifeSpan BioSciences	