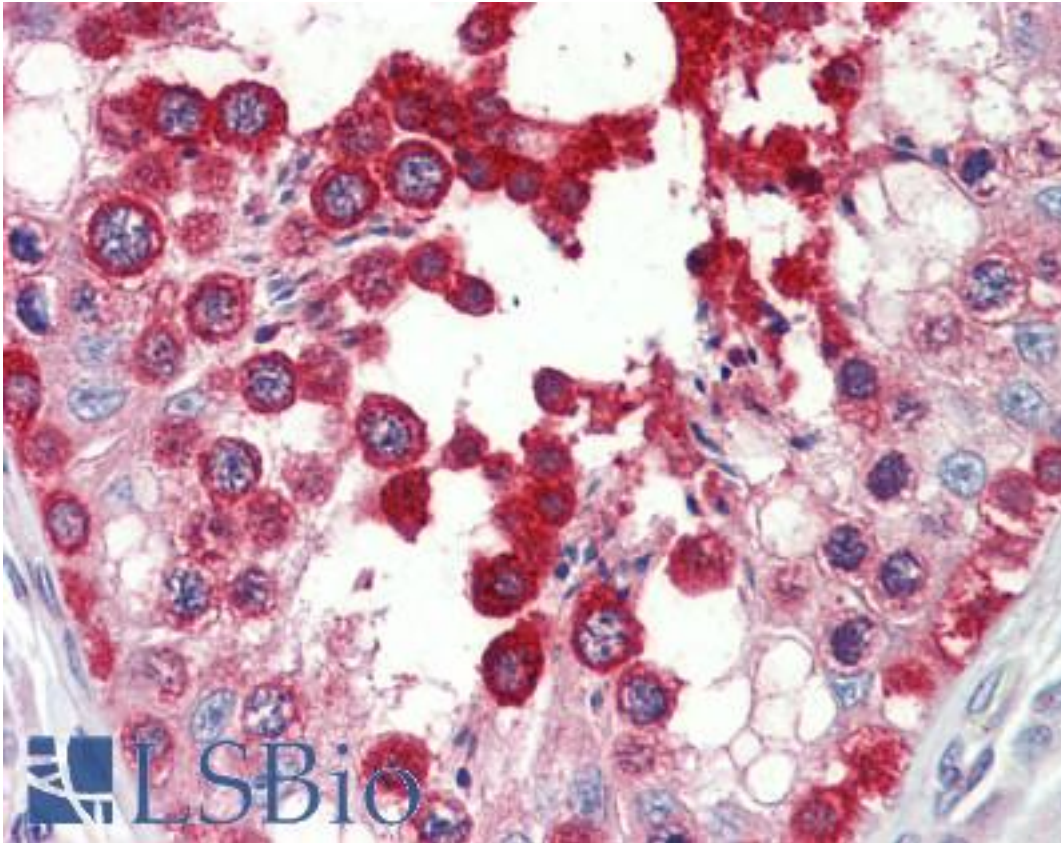


GPRC6A Rabbit anti-Human Polyclonal (aa488-517) Antibody - LS-B9471 - LSBio

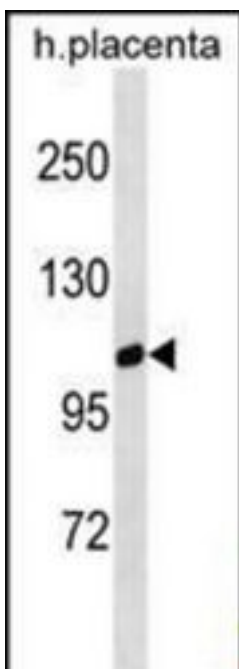
CatalogID:	LS-B9471
Validation:	This antibody replaces catalog number LS-C159779. It has been validated for use in the following assays: IHC-P.
Target:	G protein-coupled receptor, class C, group 6, member A (GPRC6A)
Synonyms:	GPRC6A Antibody, BA86F4.3 Antibody, HGPCR33 Antibody, HGPRC6A Antibody, Predicted with SOSUI analysis Antibody
Family / Subfamily:	GPCR / Amino Acid Receptor
Host	GPRC6A antibody was produced in Rabbit
Clonality:	Polyclonal
Immunogen Species:	GPRC6A antibody was raised against Human
Immunogen:	GPRC6A antibody was raised against kLH-conjugated synthetic selected from internal region of human GPRC6A.
Specificity:	Human GPRC6A
Epitope:	aa488-517
Reactivity:	Human
Purification:	Immunoaffinity purified
Presentation:	PBS, 0.09% sodium azide
Recommended Storage:	Maintain refrigerated at 2-8°C for up to 6 months. For long term storage store at -20°C.
Uses:	IHC - Paraffin (1:100), Western blot (1:1000) (Optimal dilution to be determined by the researcher)
Size:	200 µl

Immunohistochemistry Image:



Human Testis: Formalin-Fixed, Paraffin-Embedded (FFPE)

Western Blot Image:



GPRC6A Antibody (Center) Western blot of human placenta tissue lysates (35 ug/lane). This demonstrates the GPRC6A antibody detected the GPRC6A protein (arrow).

Requested From:	Japan
Laboratory Reagent For In Vitro Research Use Only	
Not for resale without prior written consent from LifeSpan BioSciences, Inc.	
Created on 9/24/2014	
© 2014 LifeSpan BioSciences	