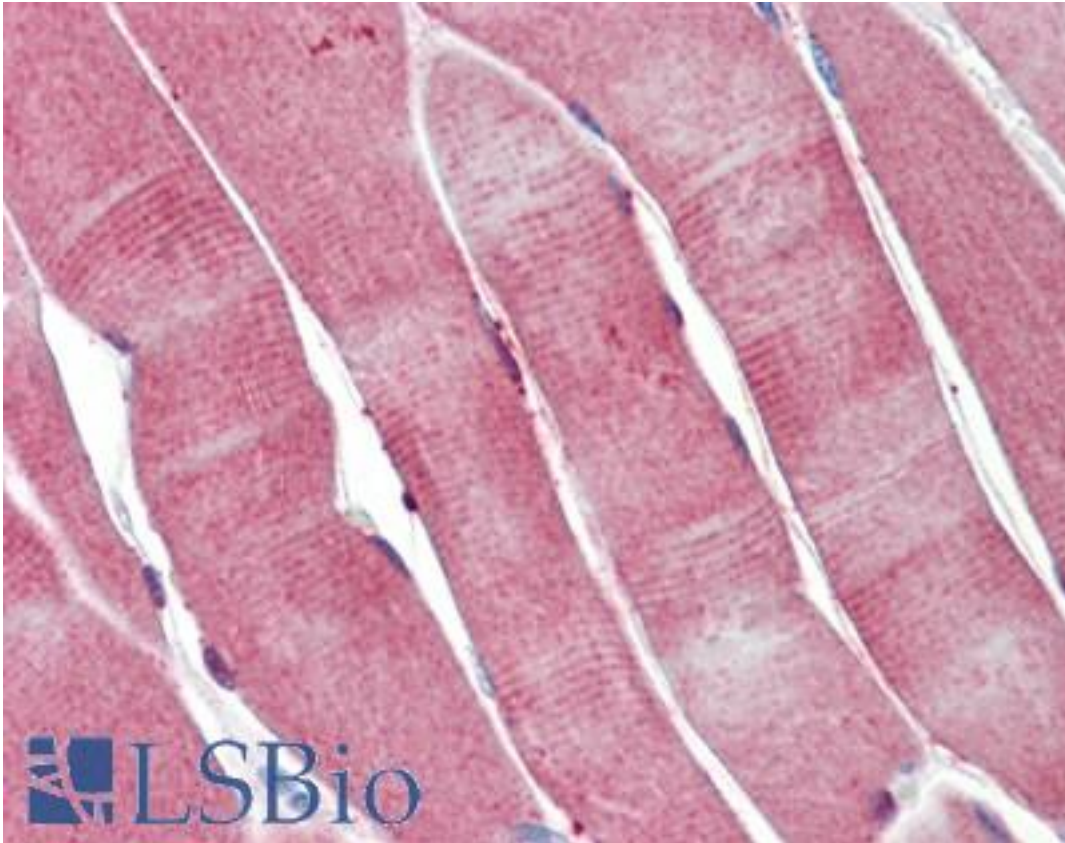


**PGAM2 Mouse anti-Human Monoclonal (4E9) Antibody - LS-B9469 - LSBio**

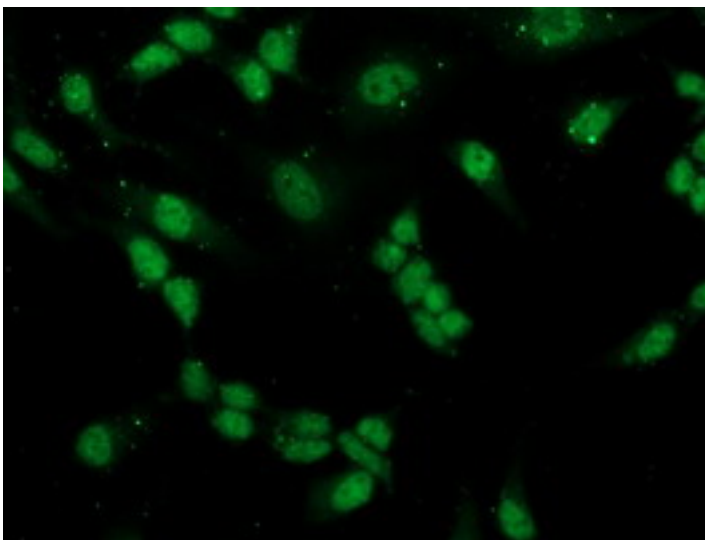
<b>CatalogID:</b>	LS-B9469
<b>Validation:</b>	This antibody replaces catalog number LS-C173247. It has been validated for use in the following assays: IHC-P.
<b>Target:</b>	phosphoglycerate mutase 2 (muscle) (PGAM2)
<b>Synonyms:</b>	PGAM2 Antibody, BPG-dependent PGAM 2 Antibody, GSD10 Antibody, PGAMM Antibody, PGAM-M Antibody, Phosphoglycerate mutase 2 Antibody
<b>Host</b>	PGAM2 antibody was produced in Mouse
<b>Clonality:</b>	Monoclonal
<b>Isotype:</b>	IgG2a
<b>Clone Name:</b>	4E9
<b>Immunogen Species:</b>	PGAM2 antibody was raised against Human
<b>Antigen Type:</b>	Recombinant protein
<b>Immunogen:</b>	PGAM2 antibody was raised against full length human recombinant protein of human PGAM2(NP_000028) produced in HEK293 cell.
<b>Specificity:</b>	Human PGAM2
<b>Reactivity:</b>	Human, Monkey, Mouse
<b>Purification:</b>	Protein A/G purified
<b>Presentation:</b>	PBS, pH 7.3, 1% BSA, 50% glycerol, 0.02% sodium azide
<b>Recommended Storage:</b>	Store at -20°C. Minimize freezing and thawing.
<b>Uses:</b>	IHC - Paraffin (1:150) & (10 µg/ml), Immunofluorescence (1:50 - 1:100), Western blot (1:500 - 1:2000), Flow Cytometry (1:100) (Optimal dilution to be determined by the researcher)
<b>Size:</b>	50 µl
<b>Concentration:</b>	1 mg/ml

**Immunohistochemistry Image:**



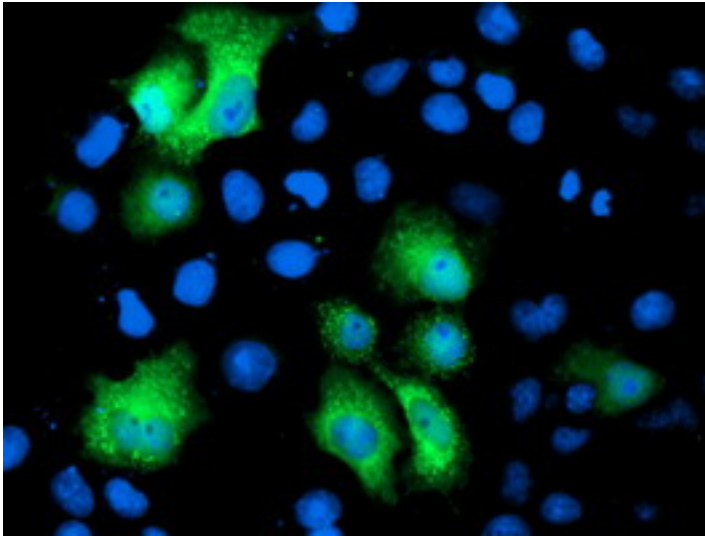
Human Skeletal Muscle: Formalin-Fixed, Paraffin-Embedded (FFPE)

**Immunofluorescence Image:**



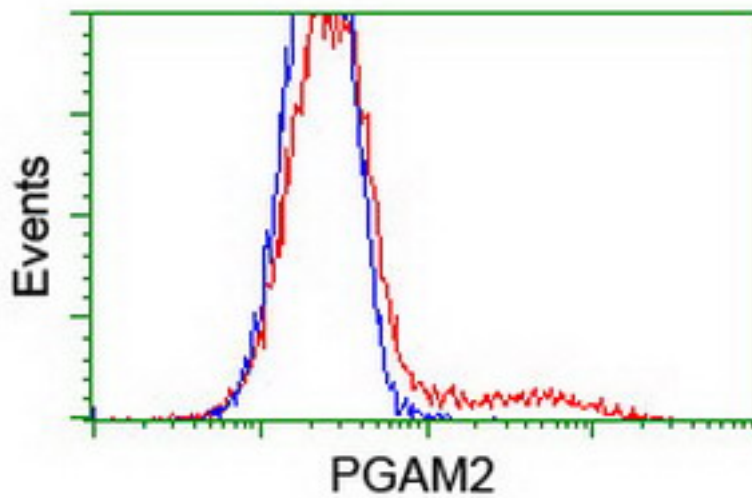
Immunofluorescent staining of HeLa cells using anti-PGAM2 mouse monoclonal antibody.

**Immunofluorescence Image:**



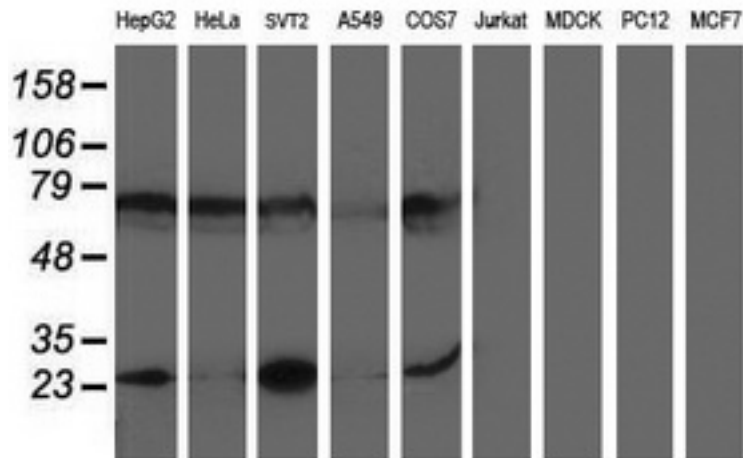
Anti-PGAM2 mouse monoclonal antibody immunofluorescent staining of COS7 cells transiently transfected by pCMV6-ENTRY PGAM2.

**Flow Cytometry Image:**



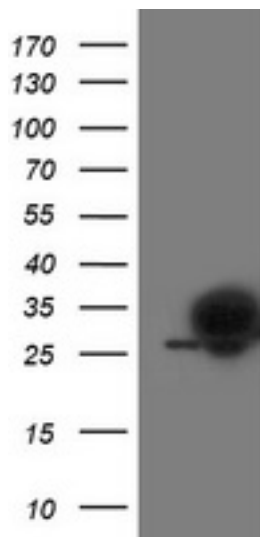
HEK293T cells transfected with either overexpress plasmid (Red) or empty vector control plasmid (Blue) were immunostained by anti-PGAM2 antibody, and then analyzed by flow cytometry.

**Western Blot Image:**



Western blot of extracts (35 ug) from 9 different cell lines by using anti-PGAM2 monoclonal antibody.

**Western Blot Image:**



HEK293T cells were transfected with the pCMV6-ENTRY control (Left lane) or pCMV6-ENTRY PGAM2 (Right lane) cDNA for 48 hrs and lysed. Equivalent amounts of cell lysates (5 ug per lane) were separated by SDS-PAGE and immunoblotted with anti-PGAM2.

**Requested From:**

Japan

Laboratory Reagent For In Vitro Research Use Only

Not for resale without prior written consent from LifeSpan BioSciences, Inc.

Created on 9/24/2014

© 2014 LifeSpan BioSciences